

CERTIFICATE OF LOCATION OF GOVERNMENT CORNER

CITY MON. NO. 68 & 3503

OLD INDEX NO. 1212

E 1/4 Corner of Section 28 Township 29 Range 23, 4 P.M.

STATE OF MINNESOTA, County of Ramsey
At the corner location shown on the sketch:

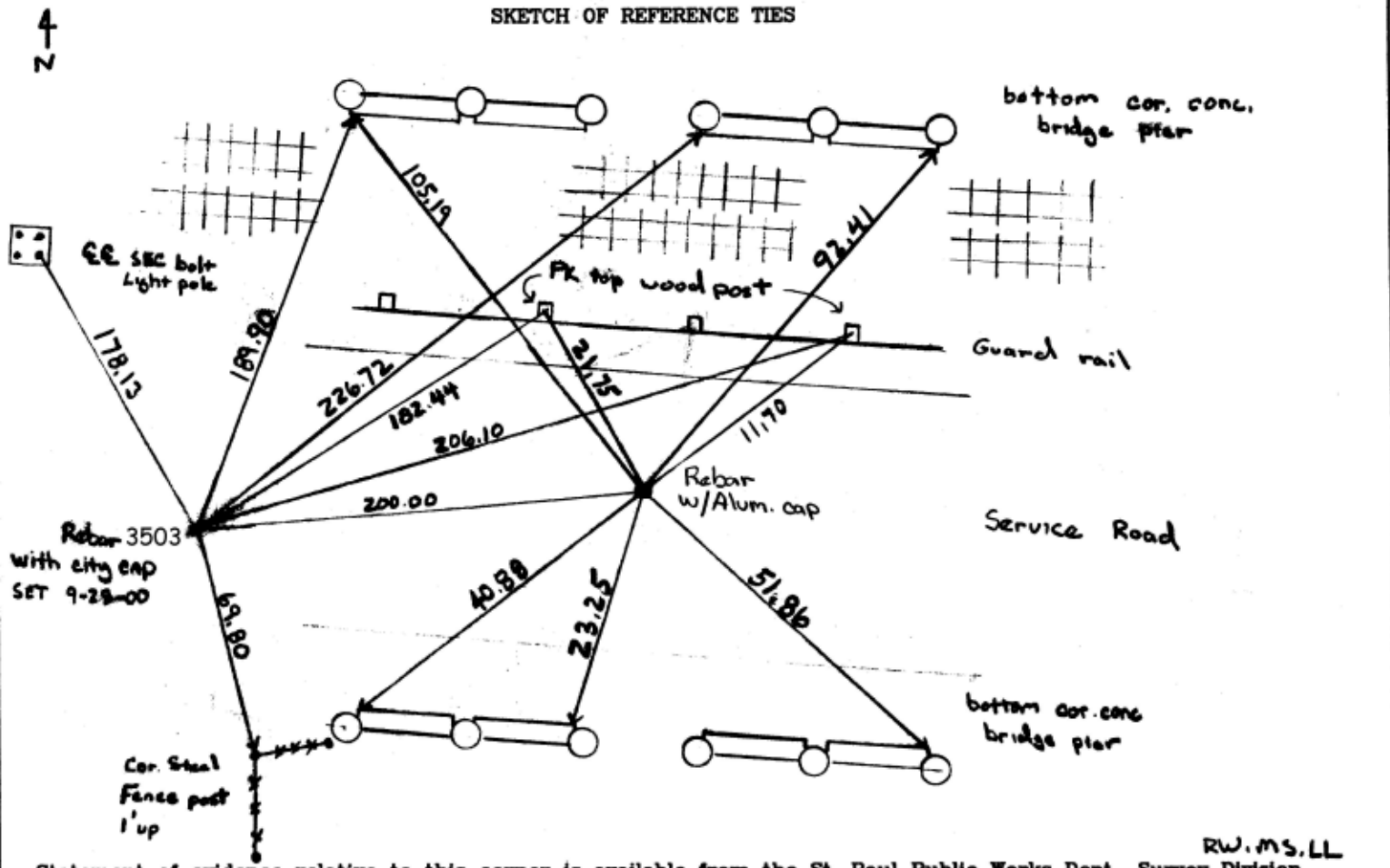
On Sept 26, 2000 found a Rebar w/Alum. cap under Snelling Ave Bridge

0.10' below asphalt surface

- left monument as found
- lowered monument
- removed monument (explain)

On Sept 26, 2000 placed a Rebar w/cap 200 ft west of Alum. cap on line

SKETCH OF REFERENCE TIES



RW.MS.LL

Statement of evidence relative to this corner is available from the St. Paul Public Works Dept., Survey Division

I hereby certify that this document and the data contained herein was prepared by me or under my direct supervision.

Jeffrey J. James 10/2/00
SIGNATURE DATE

Registration No. 13144

- Land Surveyor
- County Surveyor
- Professional Engineer
- Chief Surveyor, City of St. Paul

Office of The County Recorder, County of Ramsey

I hereby certify that this document was filed in the county

Recorders office at _____ M. on the _____ day of _____

County Recorder _____

By _____, Deputy

DOCUMENT NUMBER _____