

# CERTIFICATE OF LOCATION OF GOVERNMENT CORNER

MON. NO. 67  
OLD INDEX 2202

CENTER 1/4 Corner of Section 28 Township 29 Range 23, 4TH P.M.

STATE OF MINNESOTA, County of Ramsey

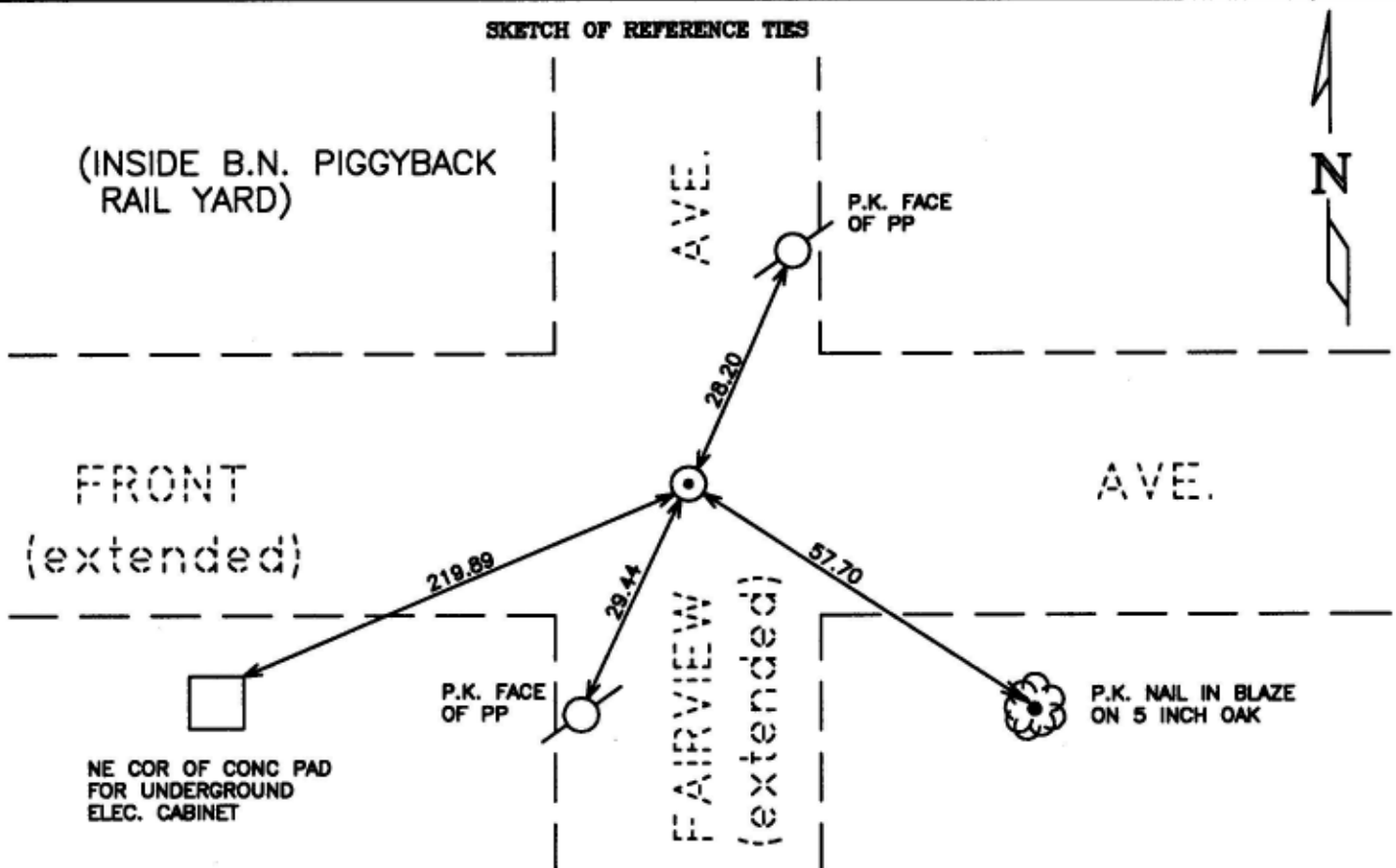
At the corner location shown on the sketch:

On NOV. 30, 1995 found a CONCRETE MONUMENT DOWN .3 FT. +/-  
date  
AND RETIED

left monument as found       lowered monument       removed monument (explain)

On \_\_\_\_\_ placed a \_\_\_\_\_  
date

SKETCH OF REFERENCE TIES



Statement of evidence relative to this corner is available from St. Paul Public Works Dept., Survey Division

I hereby certify that this document and the data contained herein was prepared by me or under my direct supervision.

Richard C. Lenson DEC. 27, 1995  
SIGNATURE DATE

Registration No. 23300

- Land Surveyor       County Surveyor  
 Professional Engineer  
 Chief Surveyor, City of St. Paul

Office of The County Recorder, County of Ramsey

I hereby certify that this document was filed in the county

Recorders office at \_\_\_\_\_ m. on the \_\_\_\_\_ day of \_\_\_\_\_

County Recorder \_\_\_\_\_

By \_\_\_\_\_, Deputy

DOCUMENT NUMBER \_\_\_\_\_