

CERTIFICATE OF LOCATION OF GOVERNMENT CORNER

City ID: 0066

Old Index #: 1051

County ID #: 512

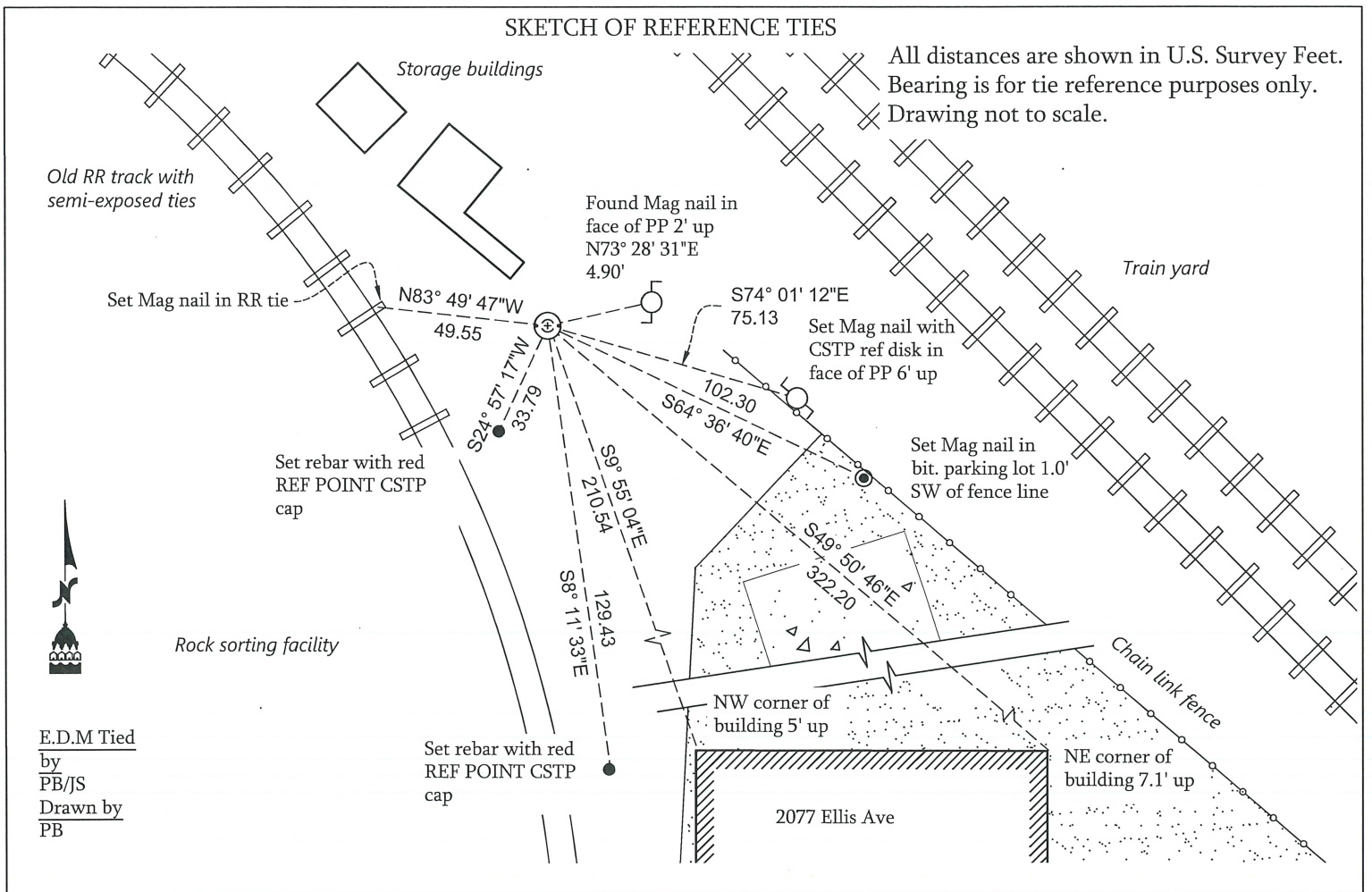
West Quarter Corner of Section 28, Township 29 North,
Range 23 West, Fourth Principal Meridian, County of Ramsey, State of Minnesota,
At the corner location shown on the sketch:

On 11/21/2025 found CIM 3' BELOW GRADE. SET AND REESTABLISHED

TIES WITH TRIMBLE S6 TOTAL STATION.

left monument as found lowered monument removed monument (explain)

On _____ placed a _____



I hereby certify that this survey, plan, or report was prepared by me, or under my direct supervision, and that I am a duly Licensed Land Surveyor under the laws of the State of Minnesota.

Kevin Kaley

12/26/2025

Kevin Kaley, LS
City Surveyor, Saint Paul, Minnesota

Registration No. #53546

Office of the County Surveyor, Ramsey County, Minnesota

I hereby certify that this document was filed with the County Surveyor's Office at 8:00 A.M. on the 4th day of

March, 2026
Daniel Baar

Daniel Baar, LS
County Surveyor, Ramsey County, Minnesota

PLS Description: 1/4 Corner EQ29/WQ28-29-23 4th P.M. not set during PLS
St. Paul Monument #: 66
St. Paul Old Index #: 1051
Ramsey County #: 0512
Location: Front Ave (prod) & Cleveland Ave (prod)

Nov 1847 A wood post was set for a witness corner top ¼ corner, 7.37 chains South of the ¼ corner.

Nov 1847 Corner not set during PLS. Fell in Lake/swamp. WC (see 1321) set S of corner.

Sep 1887 Monument set by J H Armstrong.

1887 A survey of the Cleveland Ave Section Line by J.H. Armstrong (FB 216) shows the following distances:

NE cor Sec 29 to E ¼ cor Sec 29	2623.61ft
SE cor Sec 29 to E ¼ cor Sec 29	2623.62ft

The survey also shows the following angles as measured at the E ¼ cor Sec 29:

NE cor Sec 29 – Cen ¼ cor Sec 29	90° 20'
SE cor sec 29 – Cen ¼ cor Sec 29	89° 39'

Dec 1890 A survey made by J.H. Armstrong of the Center Line Sec 28 W to E (FB 335 copy) gives a distance of 2627.80ft W ¼ cor Sec 28 to Cen ¼ cor Sec 28. The survey also shows the following angle as measured at the W ¼ cor Sec 28:

NW cor sec 28 – Cen ¼ cor Sec 28	89° 38'
SW cor Sec 28 – Cen ¼ cor Sec 28	90° 23'

Feb 11, 1934 Placed ties on the granite monument 3 ft. below grade. See book MSX 4 p.30.

Mar 1971 A survey of the Cast Line of Section 29 shows both granite monument in place and gives the following chained distance:

SE cor Sec 29 – E ¼ cor Sec 29	2626.70ft
--------------------------------	-----------

Set Cast Iron Monument in Cone approximately 1ft below the surface of track bed.

Feb 1974 The corner was tied to a traverse run with a T-16 and Hewlett Packard E.D.M. which yielded the following results:

Distances:

NE cor Sec 29 – E ¼ cor Sec 29	2623.47ft
SE cor Sec 29 – E ¼ cor Sec 29	2626.27ft
E ¼ cor Sec 29 – Cen ¼ cor Sec 29	2635.66ft

E ¼ cor Sec 29 – Cen ¼ cor Sec 28	2626.58ft
Angles measured at E ¼ cor Sec 29:	
NW cor sec 28 – Cen ¼ cor Sec 28	89° 38' 38.3"
SE cor Sec 29 – Cen ¼ cor Sec 28	90° 24' 25"
SE cor Sec 29 – Cen ¼ cor Sec 29	89° 36' 28.2"
NE cor Sec 29 – Cen ¼ cor Sec 29	90° 20' 28.5"

- 1988 Traverse run from Prospect Tower to corner with a Kern E1 Total Station
- Oct 1989 Found Granite Monument at Elev. 191.32 ft approximately 4.5 to 5.0 feet below grade. See Section folder.
- Oct 1989 Removed CIM, found granite monument 4.5 ft below grade. See Yellow Tie Book.
- Aug 9, 1990 Reset CIM in concrete. See Yellow Tie Book.
- Aug 16, 1990 Found CIM in place; placed witness corner guard stake.
- Oct 1990 Elevation 191.32 ft on granite monument below CIM. See Yellow Tie Book.
- 1990 FB 1708A Page 33 Direct Measurement between E ¼ cor Sec 29 & SE cor Sec 29 with SET 3 Total Station.
- Dec 1991 Least Square Adj:
Distances:
- | | |
|-----------------------------------|-----------|
| E ¼ cor Sec 29 – Cen ¼ cor Sec 29 | 2635.86ft |
| E ¼ cor Sec 29 – NE cor Sec 29 | 2622.87ft |
| W ¼ cor Sec 28 – Cen ¼ cor Sec 28 | 2626.90ft |
| W ¼ cor Sec 28 – SW cor Sec 28 | 2625.97ft |
- Angles at E ¼ cor Sec 29:
- | | |
|----------------------------------|---------------|
| Cen ¼ cor Sec 29 – NE cor Sec 29 | 90° 20' 57.4" |
| Cen ¼ cor Sec 29 – SE cor Sec 29 | 89° 36' 07.8" |
| NW cor Sec 28 – Cen ¼ cor Sec 28 | 89° 38' 57.7" |
| SW cor Sec 28 – Cen cor Sec 28 | 90° 23' 57.1" |
- Mar 31, 2000 Found CIM 0.20 ft below grade (placed fabric target for 2000 aerial).
- Nov. 21, 2025 Found CIM 0.4 ft below grade, set new ties and took pictures.