

# CERTIFICATE OF LOCATION OF GOVERNMENT CORNER

CITY MON. NO. 63

OLD INDEX NO. 1875

N.E. 1/4 Corner of Section 26 Township 29 Range 22, 4 P.M.

STATE OF MINNESOTA, County of Ramsey

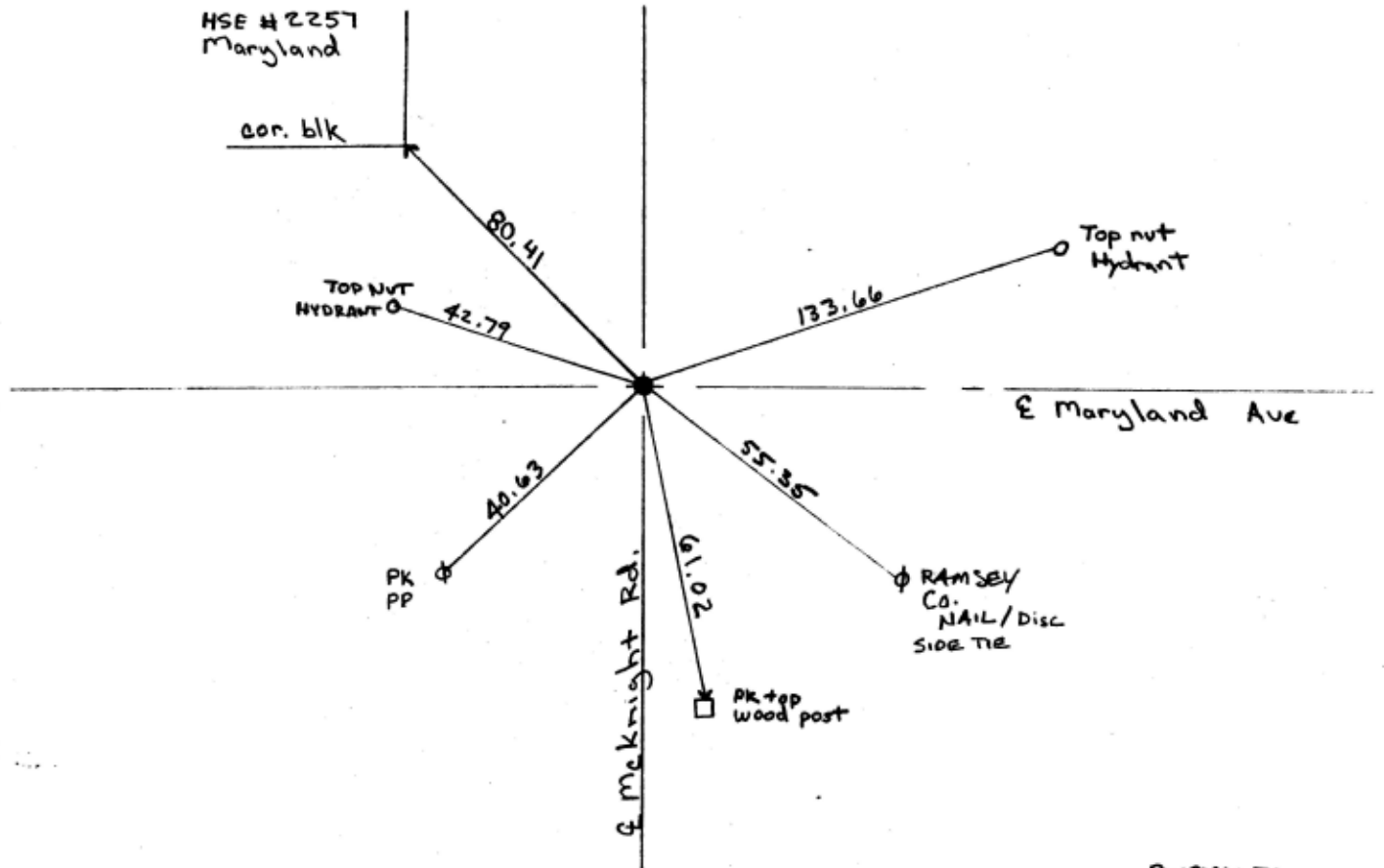
At the corner location shown on the sketch:

On March 8, 2001 found a CIM at grade  
date

left monument as found     lowered monument     removed monument (explain)

On \_\_\_\_\_ placed a \_\_\_\_\_  
date

SKETCH OF REFERENCE TIES



RWMSLLTA

Statement of evidence relative to this corner is available from the St. Paul Public Works Dept., Survey Division

I hereby certify that this document and the data contained herein was prepared by me or under my direct supervision.

Jeffrey J. Jones 3/9/01  
DATE

Registration No. 13144

- Land Surveyor     County Surveyor
- Professional Engineer
- Chief Surveyor, City of St. Paul

Office of The County Recorder, County of Ramsey

I hereby certify that this document was filed in the county  
Recorders office at \_\_\_\_\_ M. on the \_\_\_\_\_ day of \_\_\_\_\_

County Recorder \_\_\_\_\_

By \_\_\_\_\_, Deputy

DOCUMENT NUMBER \_\_\_\_\_