

CERTIFICATE OF LOCATION OF GOVERNMENT CORNER

MON. NO. 61
OLD INDEX 1741

SOUTHEAST Corner of Section 22 Township 29 Range 22, 4TH P.M.

STATE OF MINNESOTA, County of Ramsey

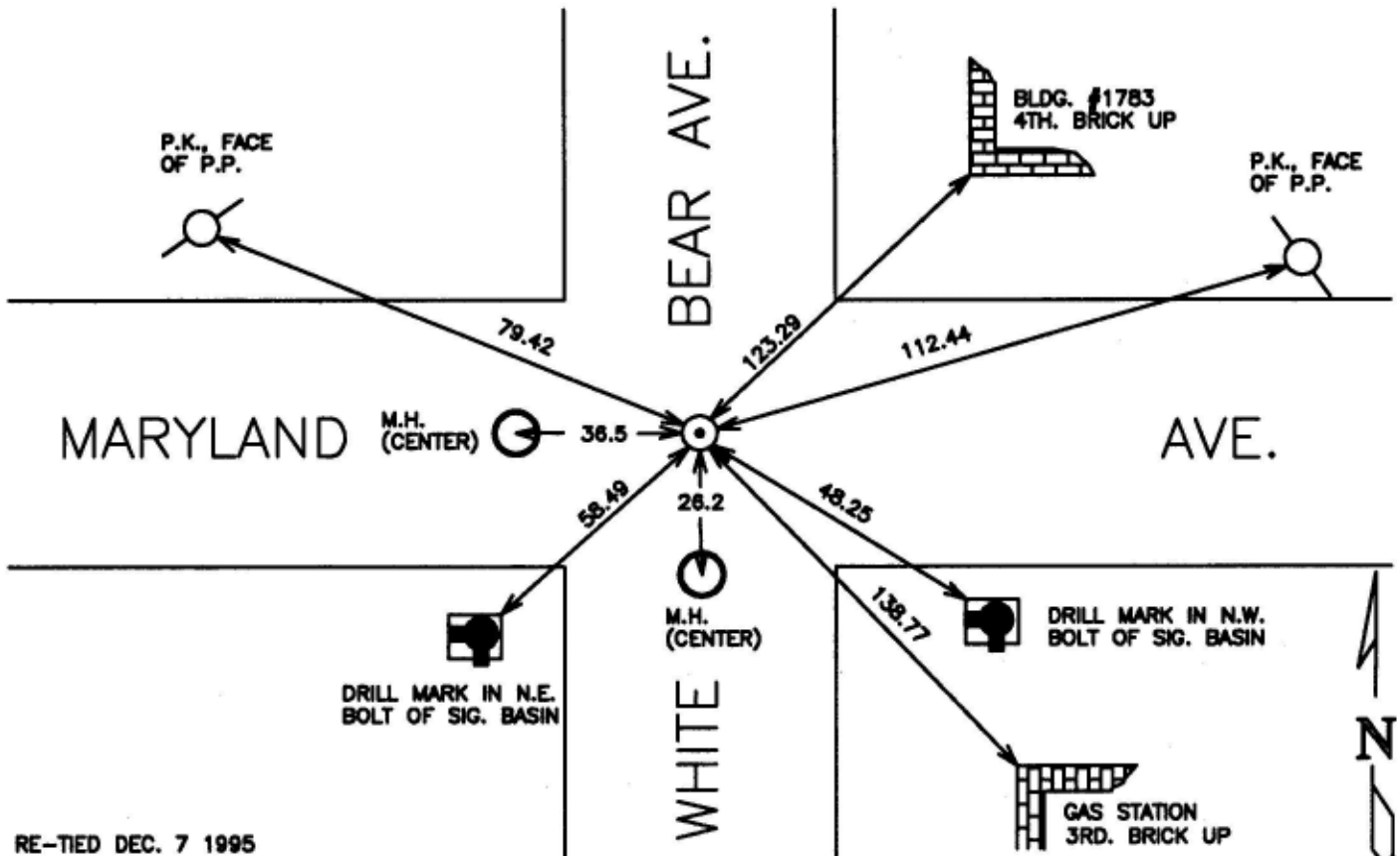
At the corner location shown on the sketch:

On DEC. 6, 1995 found a IRON PIN, PLACED STRADDLES, DUG
2 FT. +/-, REMOVED PIN, PROBED 1 FT. +/-, FELT NOTHING.

- left monument as found lowered monument removed monument (explain)

On DEC. 6, 1995 placed a 20 INCH C.I.M.

SKETCH OF REFERENCE TIES



RE-TIED DEC. 7 1995

Statement of evidence relative to this corner is available from St. Paul Public Works Dept., Survey Division

I hereby certify that this document and the data contained herein was prepared by me or under my direct supervision.

Richard C. Lensen DEC. 28, 1995
SIGNATURE DATE

Registration No. 23300

- Land Surveyor County Surveyor
 Professional Engineer
 Chief Surveyor, City of St. Paul

Office of The County Recorder, County of Ramsey

I hereby certify that this document was filed in the county

Recorders office at _____ m. on the _____ day of _____

County Recorder _____

By _____, Deputy

DOCUMENT NUMBER _____