

# CERTIFICATE OF LOCATION OF GOVERNMENT CORNER

CITY MON. NO. 55

OLD INDEX NO. 21A

NE Corner of Section 30 Township 29 Range 22, 4<sup>th</sup> P.M.

STATE OF MINNESOTA, County of Ramsey

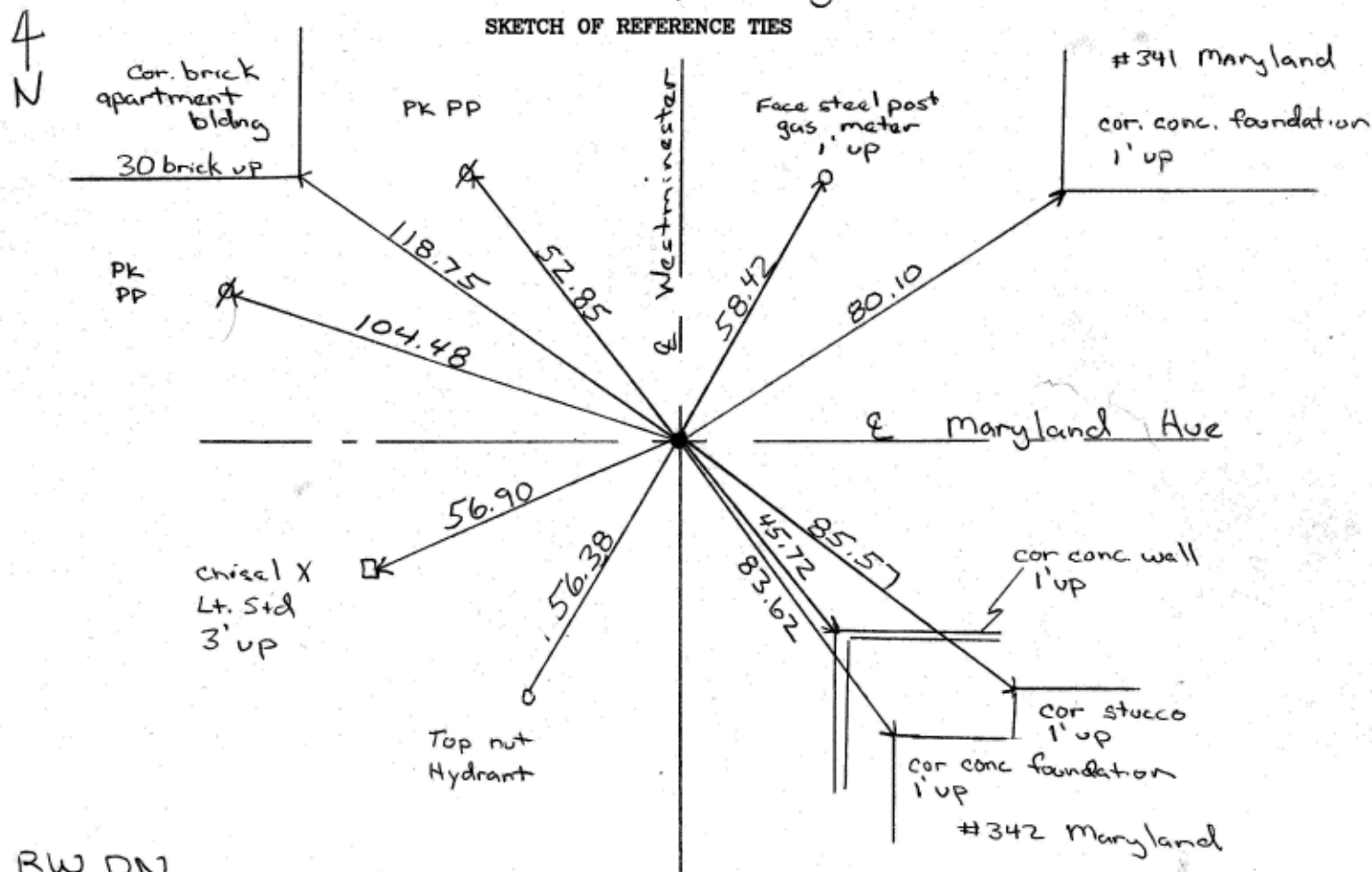
At the corner location shown on the sketch:

On July 24, 2004 found a broken off cim 0.10 below asphalt grade with 4 2ft straddles

- left monument as found
- lowered monument
- removed monument (explain)

On July 24, 2004 placed a CIM stamped section corner 0.03' below asphalt grade in concrete

SKETCH OF REFERENCE TIES



RW DN

Statement of evidence relative to this corner is available from the St. Paul Public Works Dept., Survey Division

I hereby certify that this document and the data contained herein was prepared by me or under my direct supervision.

Michael P Murphy 7/26/04  
SIGNATURE DATE

Registration No. 41001

- Land Surveyor
- County Surveyor
- Professional Engineer
- Chief Surveyor, City of St. Paul

Office of The County Recorder, County of Ramsey

I hereby certify that this document was filed in the county Recorders office at \_\_\_\_\_ M. on the \_\_\_\_\_ day of \_\_\_\_\_

County Recorder \_\_\_\_\_

By \_\_\_\_\_, Deputy

DOCUMENT NUMBER \_\_\_\_\_