

CERTIFICATE OF LOCATION OF GOVERNMENT CORNER

South 1/4 Corner of Section 19, Township 29N, Range 22W, 4th P.M.

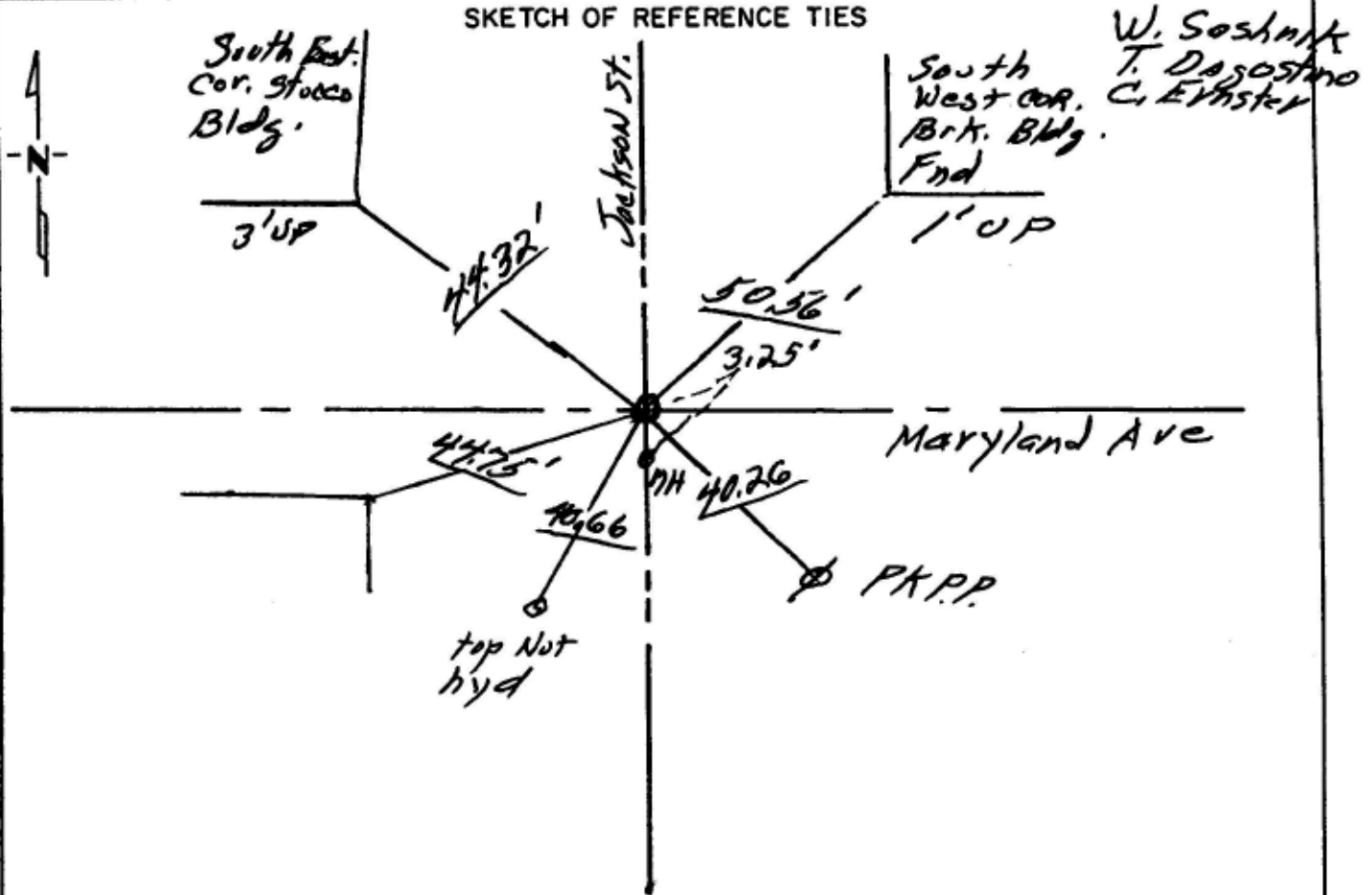
STATE OF MINNESOTA, County of Ramsey

At the corner location shown on the sketch:

On Sept 17, 1999 found a CAST IRON 3" below present Asph. Street Grade
 left monument as found, lowered monument, removed monument (explain)

On _____ DATE placed a _____

SKETCH OF REFERENCE TIES



Statement of evidence relative to this corner location is on back of page.

I hereby certify that this document and the data contained herein was prepared by me or under my direct supervision.

William J. Lutter 09/17/99
SIGNATURE DATE

Registration No. _____
 Land Surveyor, Professional Engineer
 County Surveyor, County Engineer

OFFICE OF THE COUNTY RECORDER

County of _____

I hereby certify that this document was filed in the Co. Recorders office at _____ .M. on the _____ day of _____ A.D., 19 _____

County Recorder _____

By _____, Deputy

DOCUMENT NO. _____