

CERTIFICATE OF LOCATION OF GOVERNMENT CORNER

CITY MON. NO. 52

OLD INDEX NO. 15

1/4 Corner of Section 24 & 25 Township 29 Range 23, 4TH P.M.

STATE OF MINNESOTA, County of Ramsey

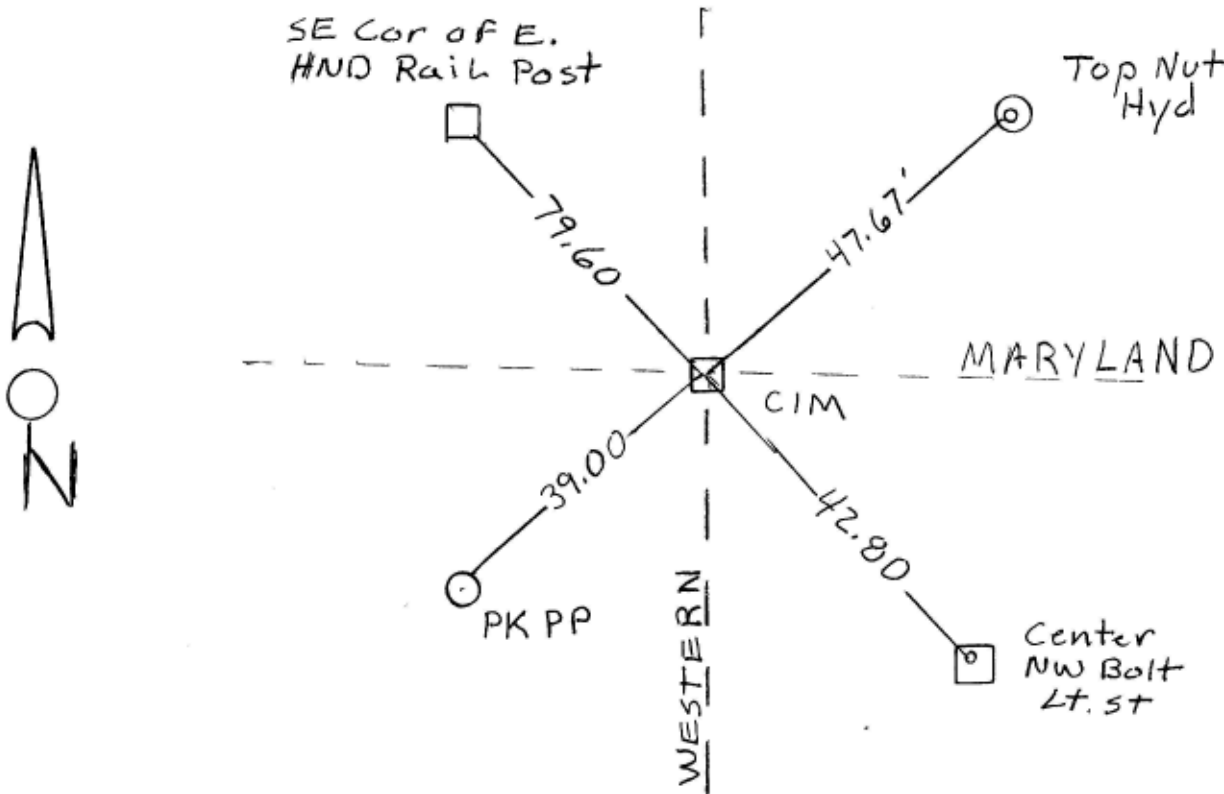
At the corner location shown on the sketch:

On 6-21-1999 found a CAST IRON MONUMENT
date

left monument as found lowered monument removed monument (explain)

On _____ placed a _____
date

SKETCH OF REFERENCE TIES



Statement of evidence relative to this corner is available from the St. Paul Public Works Dept., Survey Division

I hereby certify that this document and the data contained herein was prepared by me or under my direct supervision.

Jeffrey J. Jones 3/20/02
SIGNATURE DATE

Registration No. 13144

- Land Surveyor County Surveyor
- Professional Engineer
- Chief Surveyor, City of St. Paul

Office of The County Recorder, County of Ramsey

I hereby certify that this document was filed in the county

Recorders office at _____ M. on the _____ day of _____

County Recorder _____

By _____, Deputy

DOCUMENT NUMBER _____