

# CERTIFICATE OF LOCATION OF GOVERNMENT CORNER

CITY MON. NO. 48

OLD INDEX NO. --ev

QUARTER <sup>common to</sup> Corner ~~of~~ Sections 22 E 27 Township 29 Range 23, 4 P.M.

STATE OF MINNESOTA, County of Ramsey

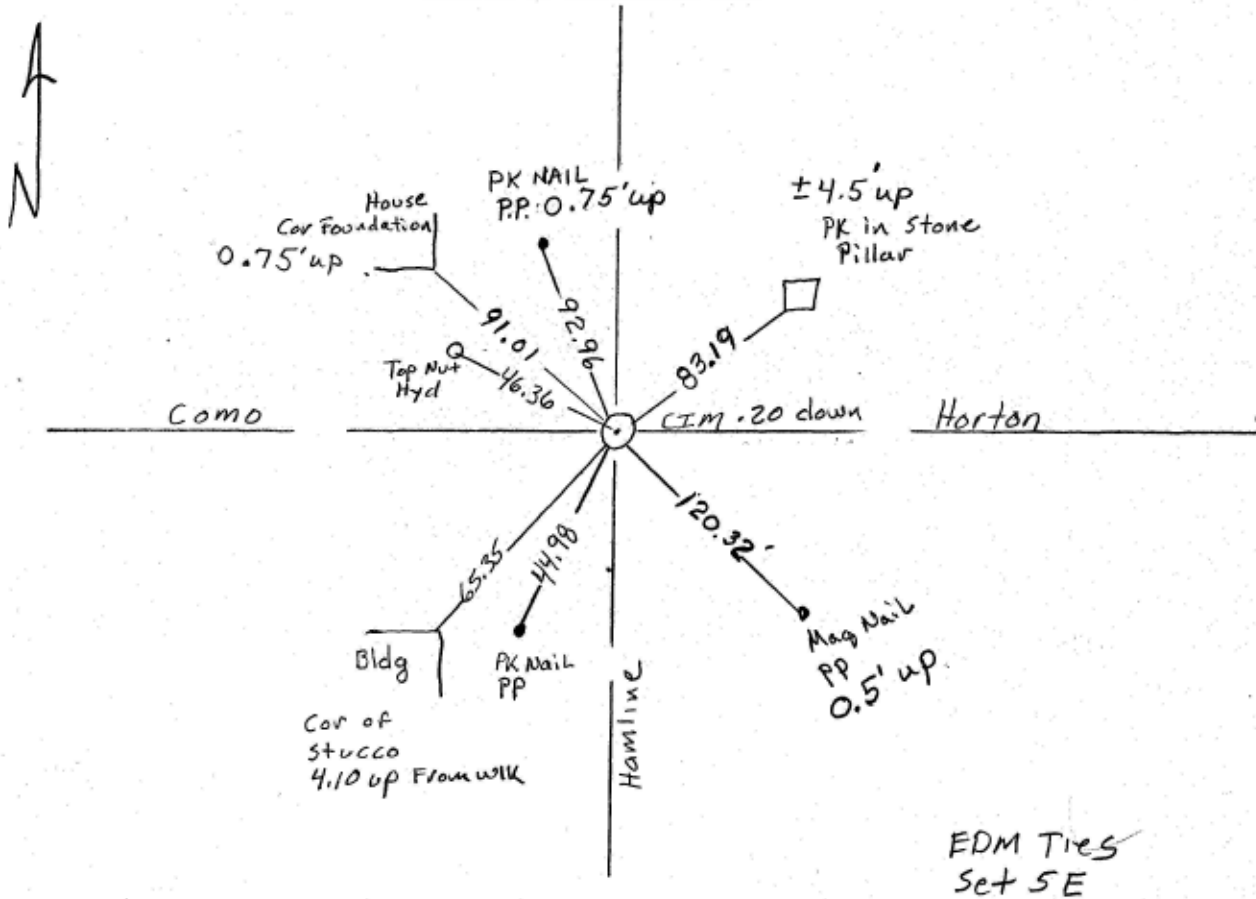
At the corner location shown on the sketch:

On 8-9-06 found a CIM 0.20 below grade  
date

left monument as found       lowered monument       removed monument (explain)

On \_\_\_\_\_ placed a \_\_\_\_\_  
date

SKETCH OF REFERENCE TIES



Statement of evidence relative to this corner is available from the St. Paul Public Works Dept., Survey Division

I hereby certify that this document and the data contained herein was prepared by me or under my direct supervision.

Michael P. Murphy 8-17-2006  
SIGNATURE DATE

Registration No. 44,001

- Land Surveyor       County Surveyor  
 Professional Engineer  
 Chief Surveyor, City of St. Paul

Office of The County Recorder, County of Ramsey

I hereby certify that this document was filed in the county  
 Recorders office at \_\_\_\_\_ M. on the \_\_\_\_\_ day of \_\_\_\_\_

County Recorder \_\_\_\_\_

By \_\_\_\_\_, Deputy

DOCUMENT NUMBER \_\_\_\_\_