

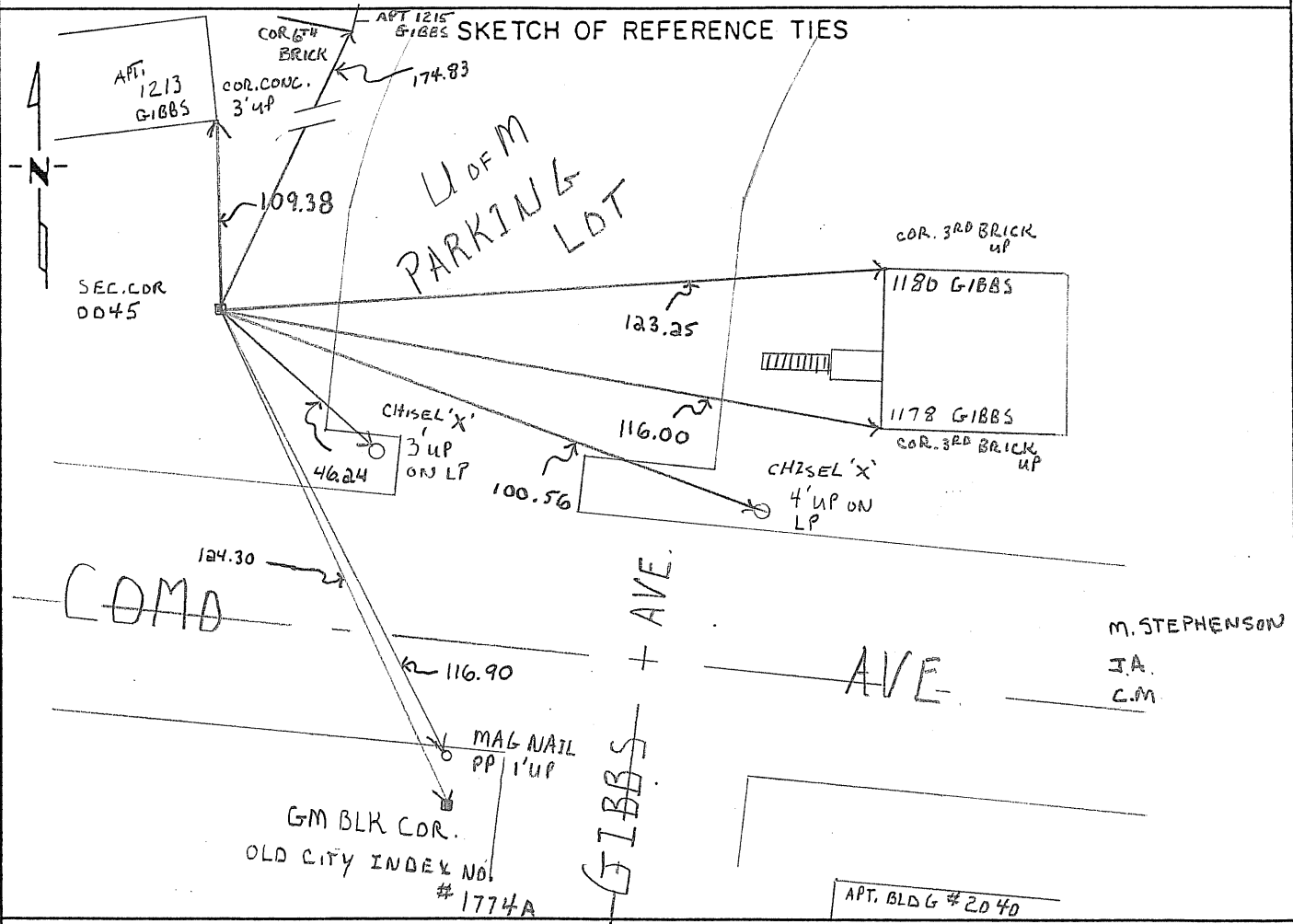
CERTIFICATE OF LOCATION OF GOVERNMENT CORNER

SOUTHERST SECTION Corner of Section 20, Township 29, Range 23, _____ P.M.

STATE OF MINNESOTA, County of RAMSELY

At the corner location shown on the sketch:

- On 3-21-2008 found a CONCRETE MONUMENT @ GRADE ON EMBANKMENT
DATE
N. of COMO AVE W. of GIBBS AVE.
- left monument as found, lowered monument, removed monument (explain)
- On 3-21-2008 placed TIES - GPS - PHOTOS TAKEN
DATE



M. STEPHENSON
J.A.
C.M.

Statement of evidence relative to this corner location is on back of page.

I hereby certify that this document and the data contained herein was prepared by me or under my direct supervision.

[Signature]
SIGNATURE DATE Aug 26, 2008

Registration No. 44880

- Land Surveyor, Professional Engineer
- County Surveyor, County Engineer

OFFICE OF THE COUNTY RECORDER
County of _____

I hereby certify that this document was filed in the Co. Recorders office at _____ .M. on the _____ day of _____ A.D., 19 _____

County Recorder _____

By _____, Deputy

DOCUMENT NO. _____