

# CERTIFICATE OF LOCATION OF GOVERNMENT CORNER

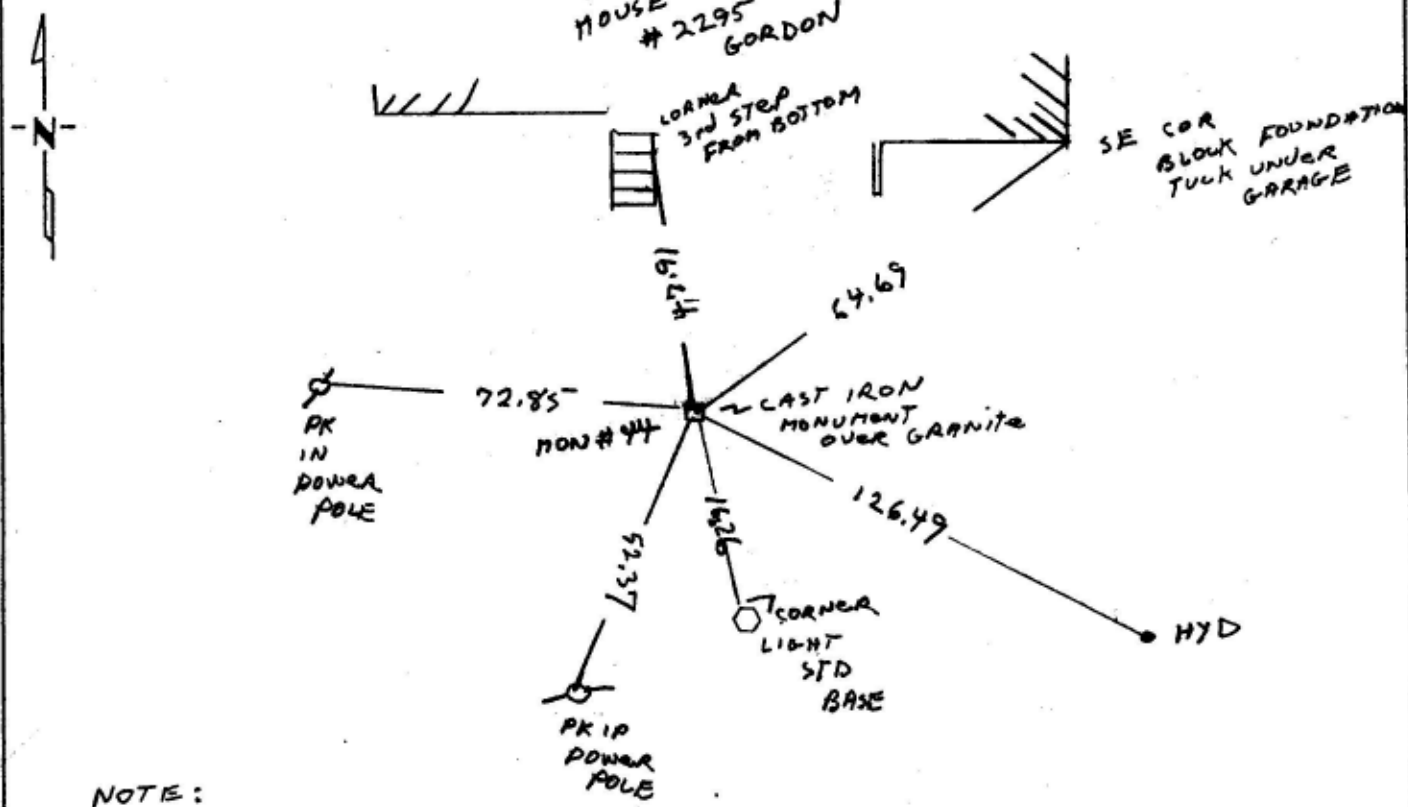
~~North 1/4~~ Corner of Section 29, Township 29, Range 23, 4th P.M.

STATE OF MINNESOTA, County of RAMSEY

At the corner location shown on the sketch:

- On 10 OCT 95 found a GRANITE MONUMENT 9" x 9"  
 under Sidewalk  
 left monument as found,  lowered monument,  removed monument (explain)
- On 11 OCT 95 placed a CAST IRON MONUMENT OVER GRANITE MONUMENT

### SKETCH OF REFERENCE TIES



NOTE:  
 See F.B. 1565B  
 PAGES 55 & 56  
 S.G.M. AT ELV 219.42  
 C.E. AT ELV 215.47

Statement of evidence relative to this corner location is on back of page.

I hereby certify that this document and the data contained herein was prepared by me or under my direct supervision

William J. Anthony SIGNATURE 12/13/95 DATE

Registration No. \_\_\_\_\_  
 Land Surveyor,  Professional Engineer  
 County Surveyor,  County Engineer

OFFICE OF THE COUNTY RECORDER  
County of \_\_\_\_\_

I hereby certify that this document was filed in the Co. Recorders office at \_\_\_\_\_ .M. on the \_\_\_\_\_ day of \_\_\_\_\_ A.D., 19 \_\_\_\_\_

County Recorder \_\_\_\_\_  
By \_\_\_\_\_, Deputy  
DOCUMENT NO. \_\_\_\_\_