

CERTIFICATE OF LOCATION OF GOVERNMENT CORNER

MON. NO. 43
OLD INDEX 1090

SECTION _____ Corner of Section 20 Township 29 Range 23, 4TH P.M.

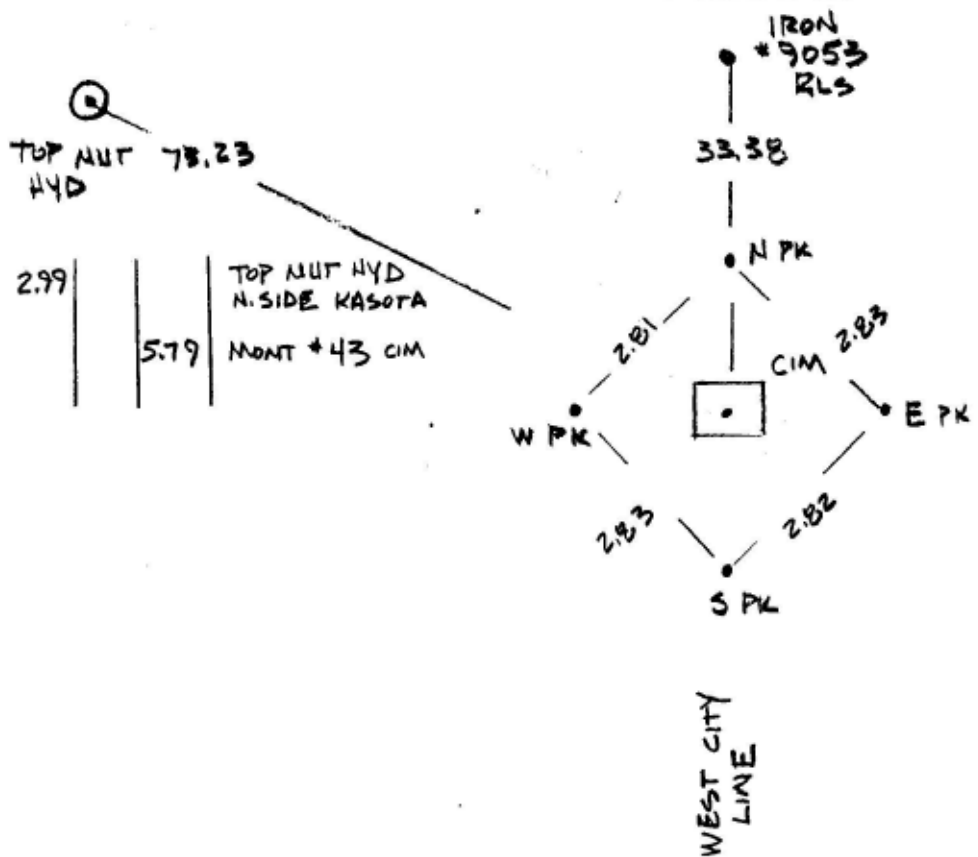
STATE OF MINNESOTA, County of Ramsey
At the corner location shown on the sketch:

On DEC 22 1998 found an IRON PIN FROM TIES, PLACED 4 PKs
2.0' STRADDLES ON N/S LINE & E/W LINE REMOVED IRON PIN, PLACED CIM

left monument as found lowered monument removed monument (explain)
IN CONCL. USING 2.0' STRADDLES

On _____ placed a _____

SKETCH OF REFERENCE TIES



OBJECT	N	S	E	W
CIM AT GRADE	2.0'	2.0'	2.0'	2.0'
R.R. SPK 1.25' BELOW GRADE	2.15'	1.87'	1.85'	2.15'
WIRE SPK 1.4' BELOW GRADE	2.12'	1.88'	2.20'	1.81'

Statement of evidence relative to this corner is available from St. Paul Public Works Dept., Survey Division

I hereby certify that this document and the data contained herein was prepared by me or under my direct supervision.

Jeffrey J. Grano 12/29/98
Registration No. 1314K

- Land Surveyor County Surveyor
 Professional Engineer
 Chief Surveyor, City of St. Paul

Office of The County Recorder, County of Ramsey
I hereby certify that this document was filed in the county

Recorders office at _____ m. on the _____ day of _____

County Recorder _____

By _____, Deputy

DOCUMENT NUMBER _____