

CERTIFICATE OF MONUMENT LOCATION

CITY MON. NO. 0042

OLD INDEX NO. 1874

1/4 Corner in the NE Qtr. of Section 23 Township 29 Range 22

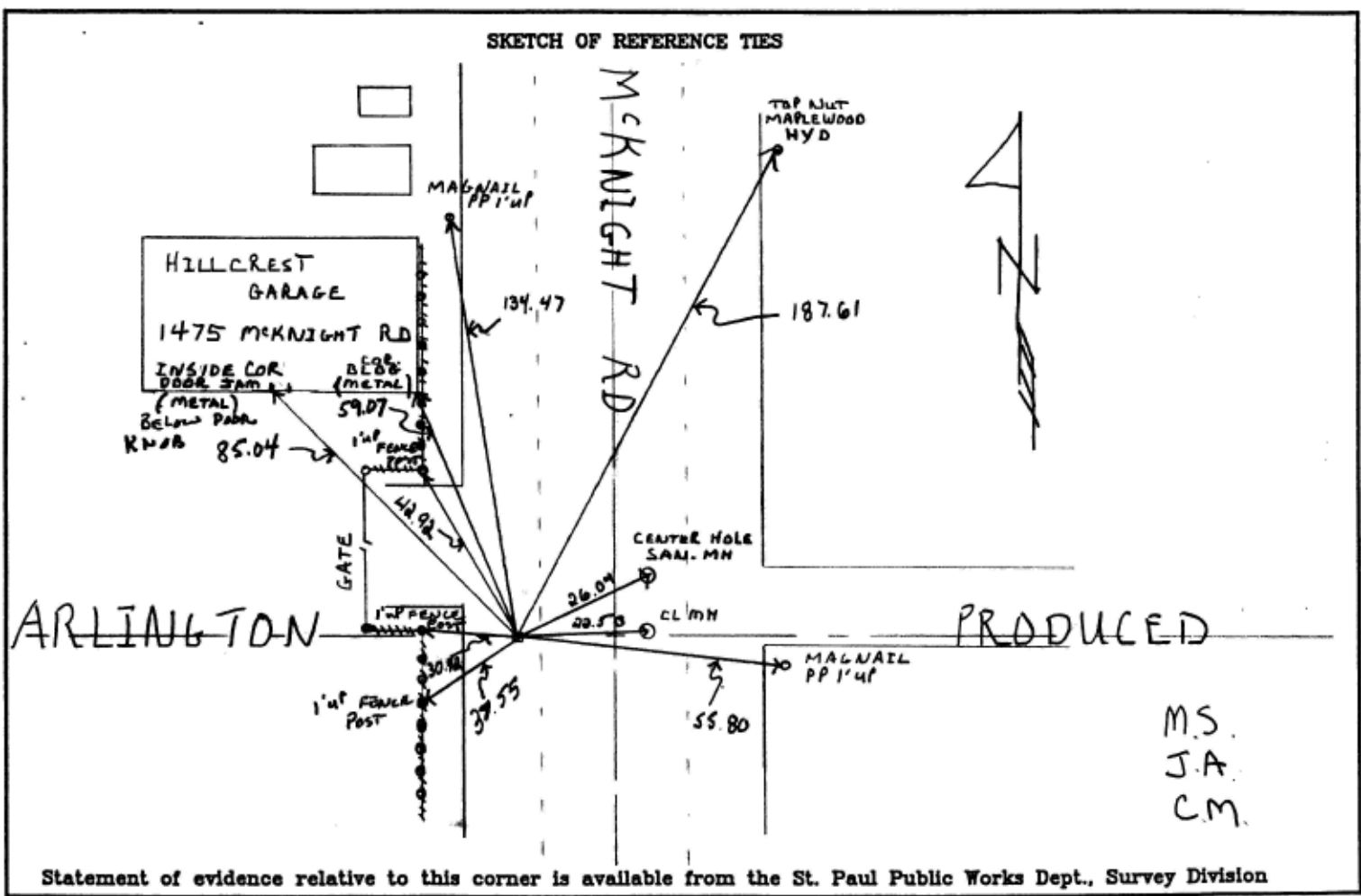
STATE OF MINNESOTA, County of Ramsey
At the corner location shown on the sketch:

On JAN 29, 2008 found a CIM 1.08' BELOW ASPHALT GRADE

BELOW CAST COVER MCKNIGHT ROAD & ARLINGTON PRODUCED

- left monument as found lowered monument removed monument (explain)

On JAN 29, 2008 placed TIES & GPS - PHOTOS



M.S.
J.A.
C.M.

Statement of evidence relative to this corner is available from the St. Paul Public Works Dept., Survey Division

I hereby certify that this document and the data contained herein was prepared by me or under my direct supervision.

[Signature] FEB 12, 2008
SIGNATURE DATE

- Registration No. 44880
- Land Surveyor County Surveyor
 Professional Engineer
 Chief Surveyor, City of St. Paul

Office of The County Recorder, County of Ramsey

I hereby certify that this document was filed in the county
Recorders office at _____ M. on the _____ day of _____

County Recorder _____

By _____, Deputy

DOCUMENT NUMBER _____