

CERTIFICATE OF LOCATION OF GOVERNMENT CORNER

MON. NO. 40
OLD INDEX 1739

WEST 1/4 Corner of Section 23 Township 29 Range 22, 4TH P.M.

STATE OF MINNESOTA, County of Ramsey

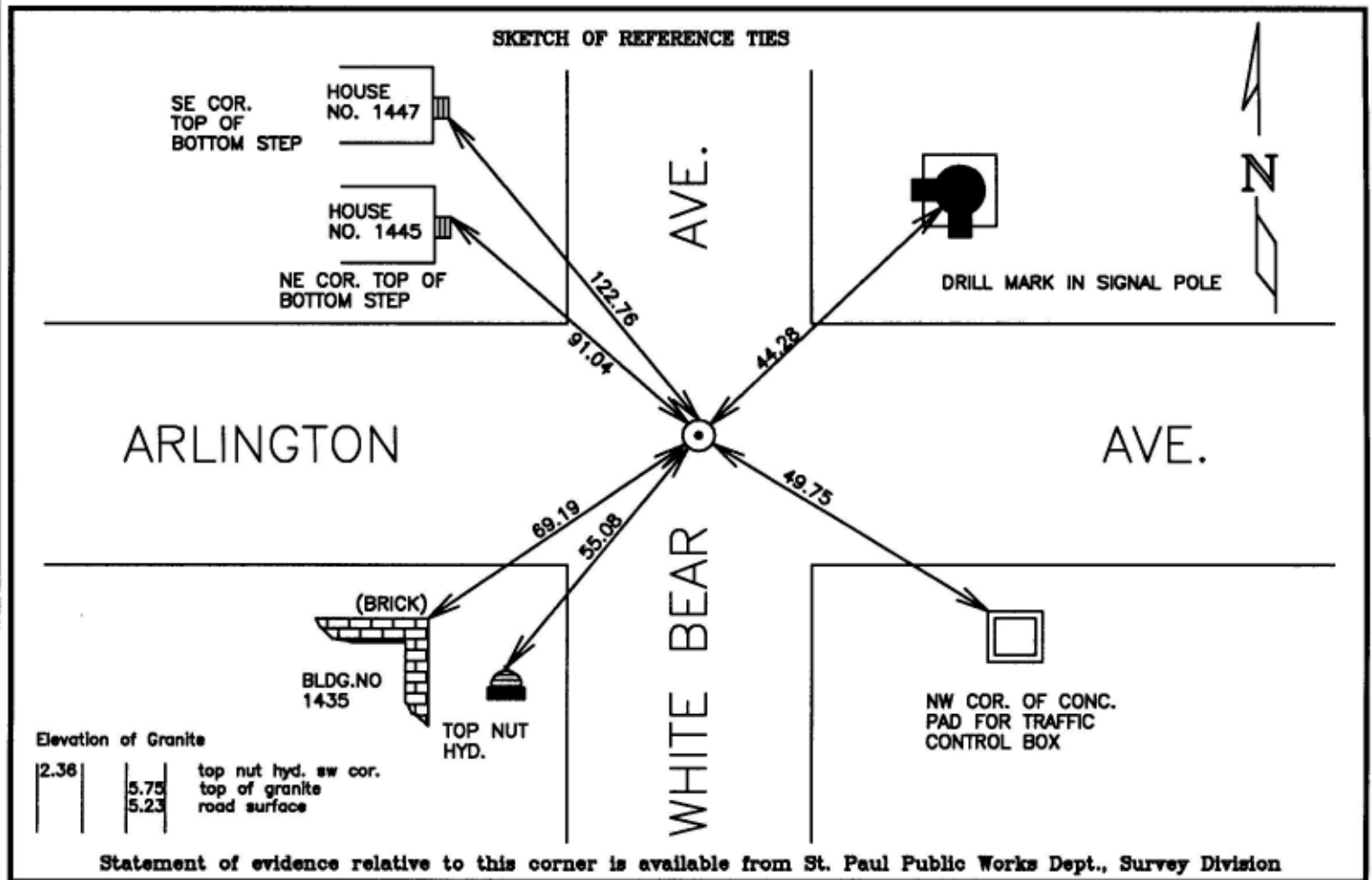
At the corner location shown on the sketch:

On NOV. 17, 1995 found a NOTHING, REPOSITIONED PT. USING TIES

AND DUG, FOUND IRON PIN IN GRANITE, GRANITE IS DOWN .5 FT. +/-, REMOVED PIN AND RETIED.

- left monument as found
- lowered monument
- removed monument (explain)

On _____ placed a _____



I hereby certify that this document and the data contained herein was prepared by me or under my direct supervision.

Richard C. Peterson DEC. 27, 1995
SIGNATURE DATE

- Registration No. 23300
- Land Surveyor
 - County Surveyor
 - Professional Engineer
 - Chief Surveyor, City of St. Paul

Office of The County Recorder, County of Ramsey
I hereby certify that this document was filed in the county

Recorders office at _____ m. on the _____ day of _____

County Recorder _____

By _____, Deputy
DOCUMENT NUMBER _____