

# CERTIFICATE OF LOCATION OF GOVERNMENT CORNER

MON. NO. 38  
OLD INDEX 1076

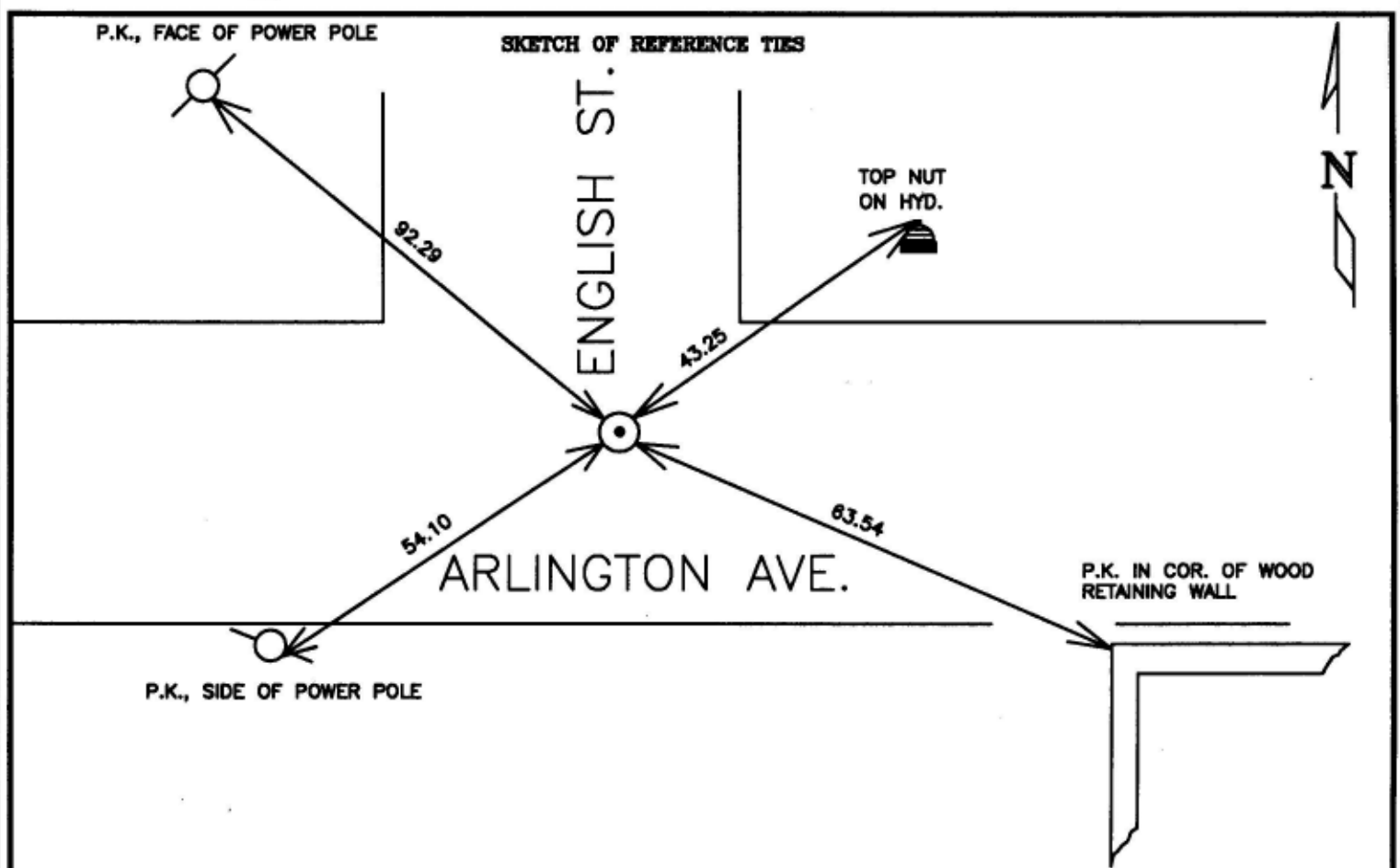
EAST 1/4 Corner of Section 21 Township 29 Range 22, 4TH. P.M.

STATE OF MINNESOTA, County of Ramsey  
At the corner location shown on the sketch:

On NOV. 22 1995 found a BROKEN C.I.M., THE TOP .5 FEET, MORE  
date  
OR LESS OF SAID MON. WAS BROKEN AND MISSING, REMOVED.

- left monument as found
- lowered monument
- removed monument (explain)

On NOV. 22 1995 placed a 20 INCH C.I.M. AT GRADE.  
date



Statement of evidence relative to this corner is available from St. Paul Public Works Dept., Survey Division

I hereby certify that this document and the data contained herein was prepared by me or under my direct supervision.

Richard C. Benson DEC. 21, 1995  
SIGNATURE DATE

- Registration No. 23300
- Land Surveyor
  - County Surveyor
  - Professional Engineer
  - Chief Surveyor, City of St. Paul

Office of The County Recorder, County of Ramsey  
I hereby certify that this document was filed in the county

Recorders office at \_\_\_\_\_ m. on the \_\_\_\_\_ day of \_\_\_\_\_  
County Recorder \_\_\_\_\_  
By \_\_\_\_\_, Deputy  
DOCUMENT NUMBER \_\_\_\_\_