

CERTIFICATE OF LOCATION OF GOVERNMENT CORNER

CITY MON. NO. 37

OLD INDEX NO. 1077

CENTER Corner of Section 21 Township 29 Range 22, P.M.

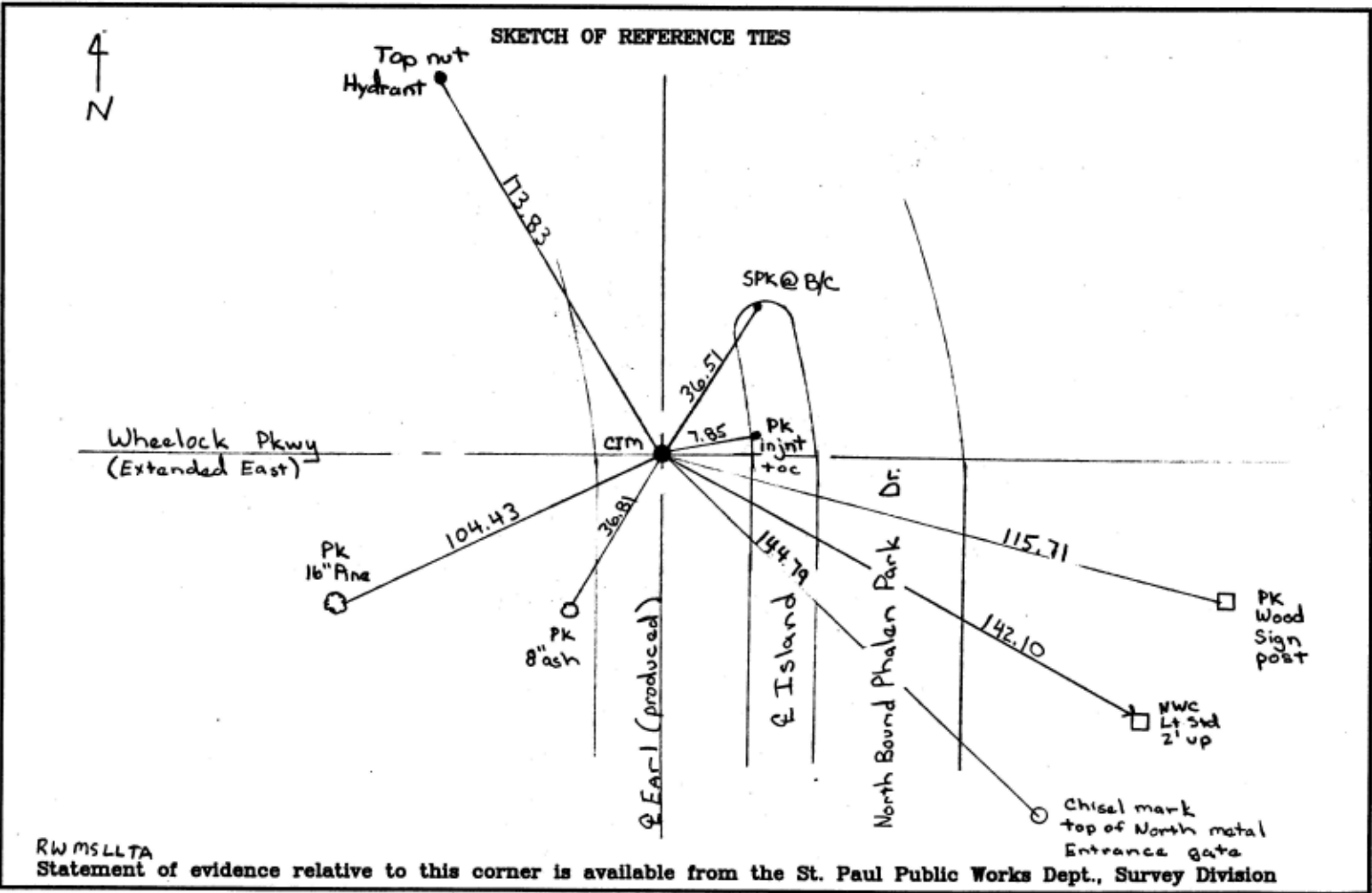
STATE OF MINNESOTA, County of Ramsey

At the corner location shown on the sketch:

On March 8, 2001 found a CIM at grade
date

left monument as found lowered monument removed monument (explain)

On placed a
date



I hereby certify that this document and the data contained herein was prepared by me or under my direct supervision.

Jeffrey J. Evans 3/9/01
SIGNATURE DATE

Registration No. 13144

Land Surveyor County Surveyor
 Professional Engineer
 Chief Surveyor, City of St. Paul

Office of The County Recorder, County of Ramsey

I hereby certify that this document was filed in the county Recorders office at M. on the day of

County Recorder

By , Deputy

DOCUMENT NUMBER