

CERTIFICATE OF LOCATION OF GOVERNMENT CORNER

MON. NO. 31
OLD INDEX 1747

CENTER Corner of Section 24 Township 29 Range 23 4TH P.M.

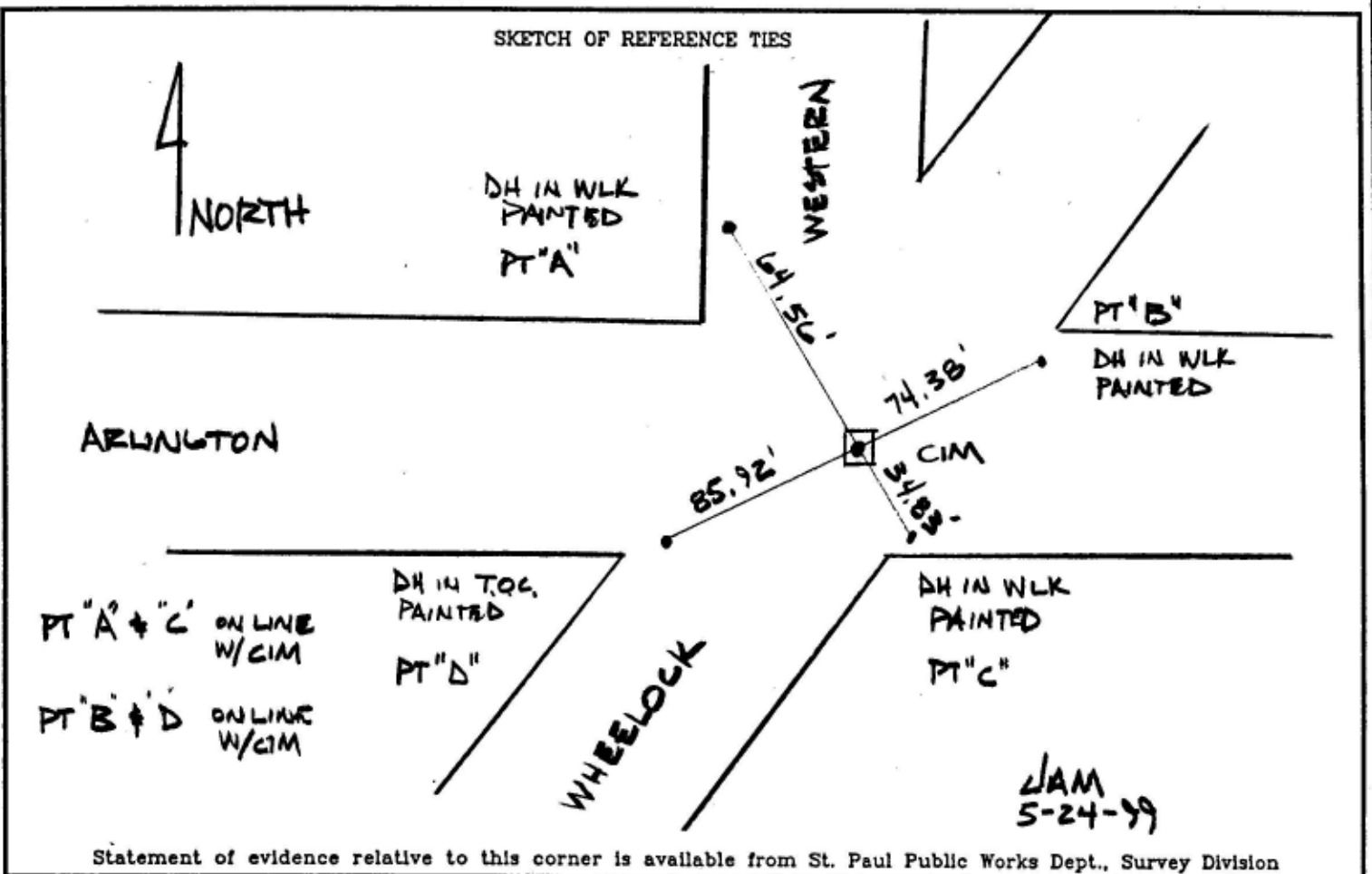
STATE OF MINNESOTA, County of Ramsey
At the corner location shown on the sketch:

On MAY 24 1999 found a CIM AT GRADE, PLACED TRANSIT TIES

left monument as found lowered monument removed monument (explain)

On _____ placed a _____

SKETCH OF REFERENCE TIES



Statement of evidence relative to this corner is available from St. Paul Public Works Dept., Survey Division

I hereby certify that this document and the data contained herein was prepared by me or under my direct supervision.

Jeffrey J. Gronow 5/27/99
SIGNATURE DATE

Registration No. 13444
 Land Surveyor County Surveyor
 Professional Engineer
 Chief Surveyor, City of St. Paul

Office of The County Recorder, County of Ramsey

I hereby certify that this document was filed in the county

Recorders office at _____ m. on the _____ day of _____

County Recorder _____

By _____, Deputy

DOCUMENT NUMBER _____