

CERTIFICATE OF LOCATION OF GOVERNMENT CORNER

MON. NO. 31
OLD INDEX 1747

CENTER Corner of Section 24 Township 29 Range 23, 4TH P.M.

STATE OF MINNESOTA, County of Ramsey

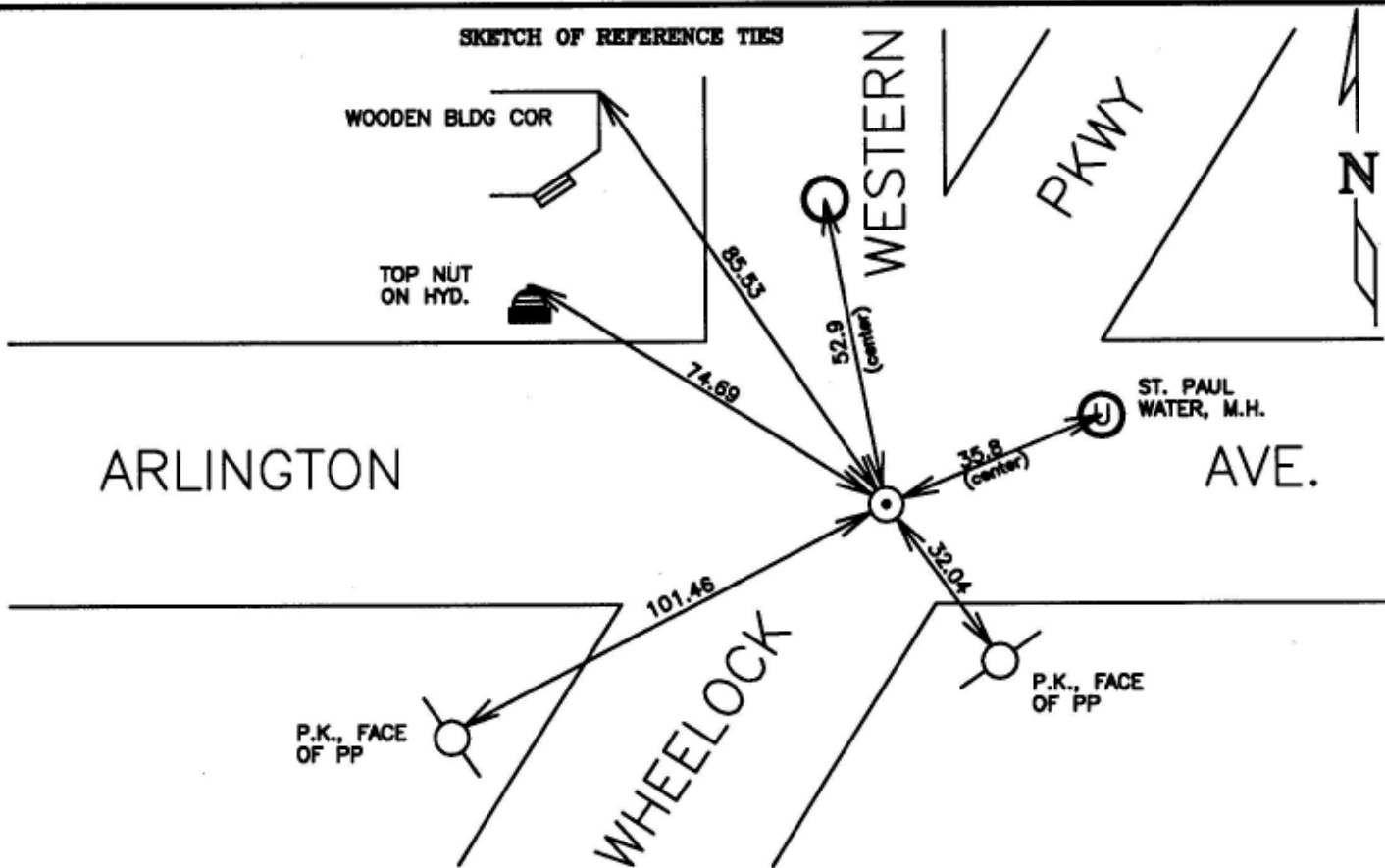
At the corner location shown on the sketch:

On NOV. 9, 1995 found a P.K., CHECKED TIES AND PLACED
P.K. STRADDLES, RE-TIED.

- left monument as found lowered monument removed monument (explain)

On NOV. 15, 1995 placed a 20 INCH C.I.M. IN POSITION OF P.K.

SKETCH OF REFERENCE TIES



Statement of evidence relative to this corner is available from St. Paul Public Works Dept., Survey Division

I hereby certify that this document and the data contained herein was prepared by me or under my direct supervision.

Richard C. Lenson DEC. 27, 1995
SIGNATURE DATE

- Registration No. 23300
- Land Surveyor County Surveyor
- Professional Engineer
- Chief Surveyor, City of St. Paul

Office of The County Recorder, County of Ramsey
I hereby certify that this document was filed in the county

Recorders office at _____ m. on the _____ day of _____

County Recorder _____

By _____, Deputy

DOCUMENT NUMBER _____