

CERTIFICATE OF LOCATION OF GOVERNMENT CORNER

CNTY MON. NO. 472
CITY MON No. 30
old INDEX 5

E 1/4 Corner of Section 23 Township 29 Range 23, 4 P.M.

STATE OF MINNESOTA, County of Ramsey

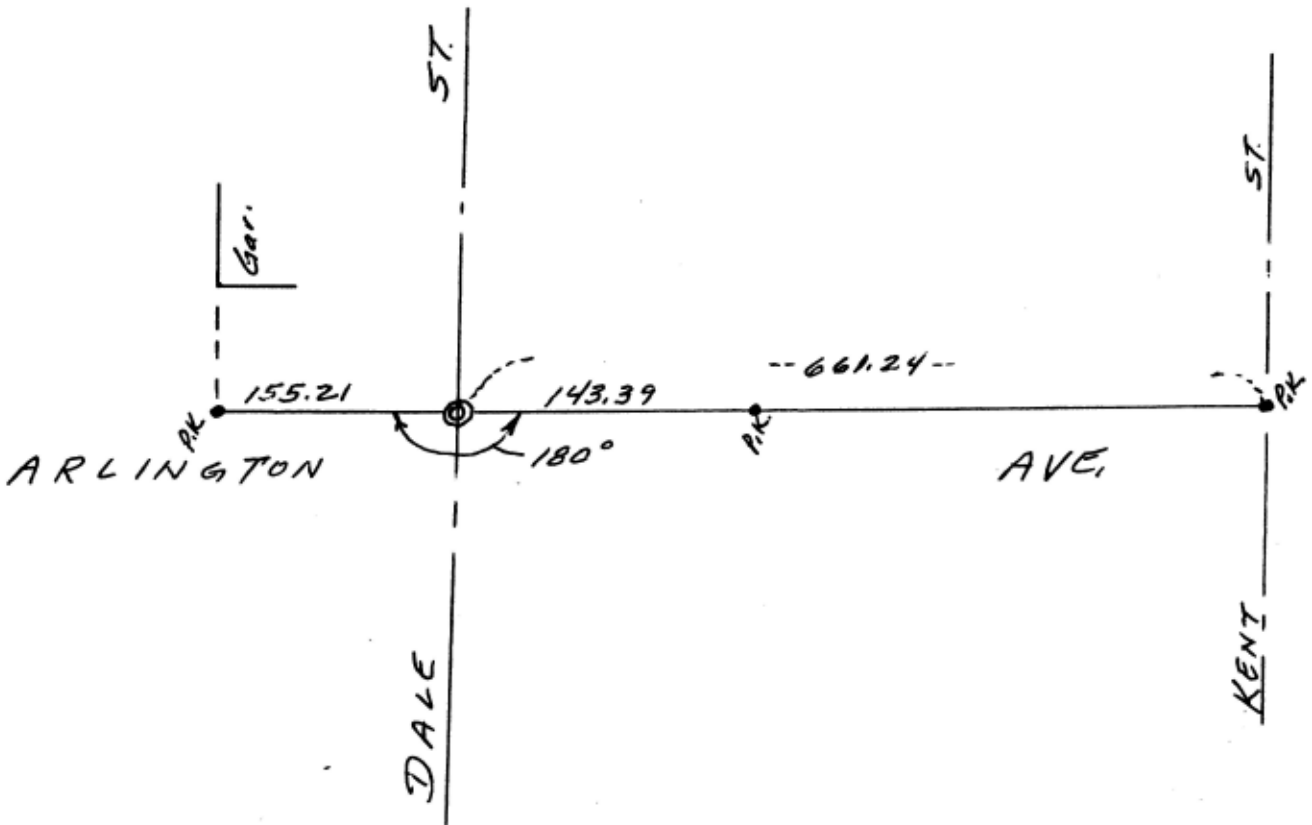
At the corner location shown on the sketch:

On Sept 24, 1998 found a cast iron in concrete

- left monument as found
- lowered monument
- removed monument (explain)
top broken off & Road Work

On June 29, 1999 placed a 20" C.I. monu.
On Sept. 8, 1999 placed 4" thick concrete around top

SKETCH OF REFERENCE TIES



Statement of evidence relative to this corner is available from St. Paul Public Works Dept., Survey Division

I hereby certify that this document and the data contained herein was prepared by me or under my direct supervision.

Ronald Meyer 9-9-99
SIGNATURE DATE

- Registration No. 9051
- Land Surveyor
 - County Surveyor
 - Professional Engineer
 - Chief Surveyor, City of St. Paul

Office of The County Recorder, County of Ramsey
I hereby certify that this document was filed in the county

Recorders office at _____ m. on the _____ day of _____

County Recorder _____

By _____, Deputy

DOCUMENT NUMBER _____