

# CERTIFICATE OF LOCATION OF GOVERNMENT CORNER

MON. NO. 029  
old Index 0003

Center Quarter Corner of Section 23 Township 29 Range 23, 4 P.M.

STATE OF MINNESOTA, County of Ramsey

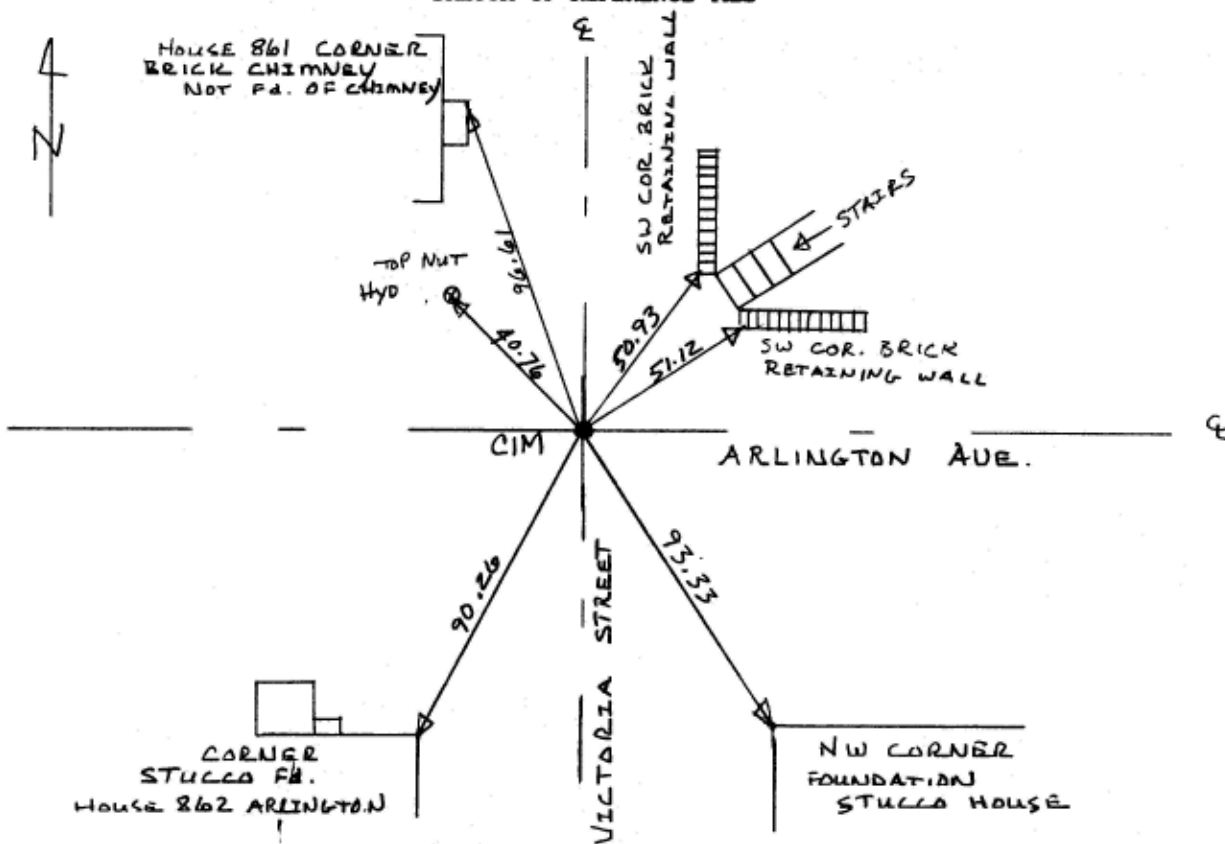
At the corner location shown on the sketch:

On SEPT. 10<sup>TH</sup> 2002 found a PK WITH 2' TIES

left monument as found       lowered monument       removed monument (explain)

On SEPT 11<sup>TH</sup> 2002 placed a CAST IRON MONT. .03 BELLOW GRADE

SKETCH OF REFERENCE TIES



MS. R.W.

Statement of evidence relative to this corner is available from St. Paul Public Works Dept., Survey Division

I hereby certify that this document and the data contained herein was prepared by me or under my direct supervision.

Jeffrey J. Gurnea 9/13/02  
SIGNATURE DATE

Registration No. 13144  
 Land Surveyor       County Surveyor  
 Professional Engineer  
 Chief Surveyor, City of St. Paul

Office of The County Recorder, County of Ramsey

I hereby certify that this document was filed in the county

Recorders office at \_\_\_\_\_ m. on the \_\_\_\_\_ day of \_\_\_\_\_

County Recorder \_\_\_\_\_

By \_\_\_\_\_, Deputy

DOCUMENT NUMBER \_\_\_\_\_