

CERTIFICATE OF LOCATION OF GOVERNMENT CORNER

CITY MON. NO. 26
OLD INDEX NO. 2270 & 2684

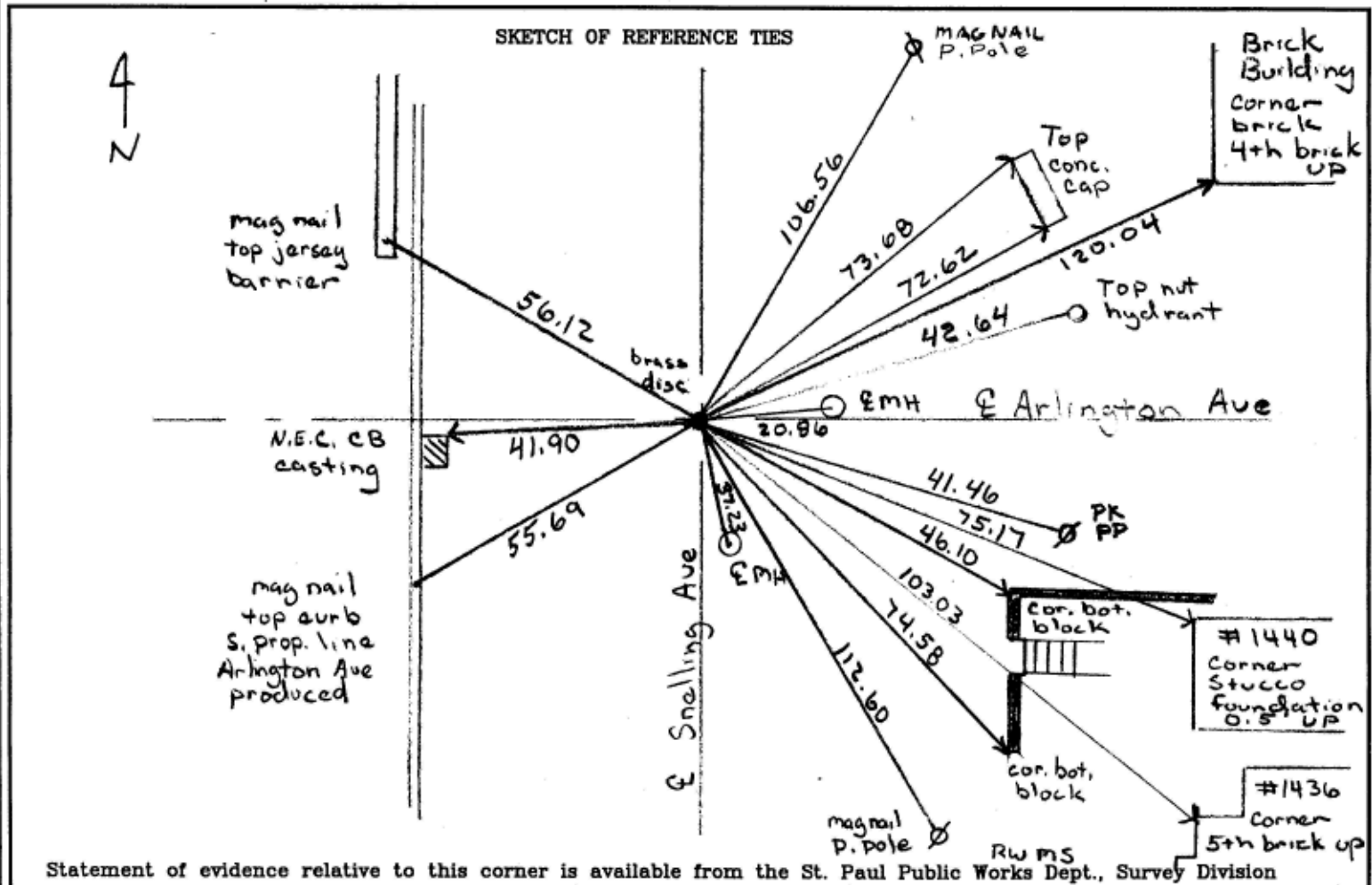
QUARTER common to Corner of Sections 21 & 22 Township 29 Range 23, 4th P.M.

STATE OF MINNESOTA, County of Ramsey
At the corner location shown on the sketch:

On September 28, 2002 found a Drill Hole in concrete pavement
date

- left monument as found
- lowered monument
- removed monument (explain)

On September 28, 2002 placed a Brass Disc 0.02 below concrete pavement
date



I hereby certify that this document and the data contained herein was prepared by me or under my direct supervision.

Jeffrey L. Givens 10/8/02
SIGNATURE DATE

Registration No. 13144

- Land Surveyor County Surveyor
- Professional Engineer
- Chief Surveyor, City of St. Paul

Office of The County Recorder, County of Ramsey

I hereby certify that this document was filed in the county
Recorders office at _____ M. on the _____ day of _____

County Recorder _____

By _____, Deputy

DOCUMENT NUMBER _____