

CERTIFICATE OF LOCATION OF GOVERNMENT CORNER

MON. NO. 24
old index 1503

E 1/4 Corner of Section 20 Township 29 Range 23, 4TH P.M.

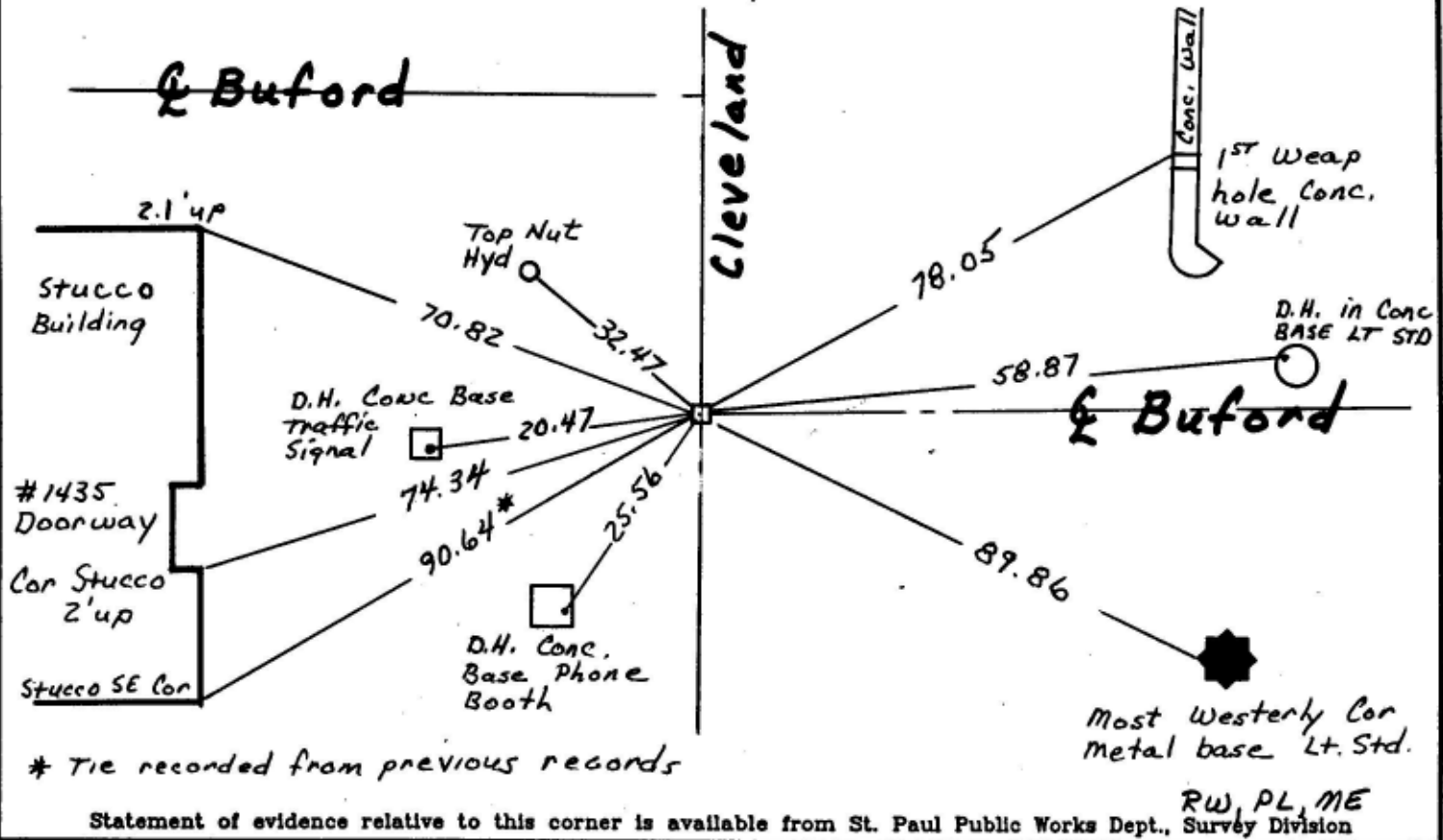
STATE OF MINNESOTA, County of Ramsey
At the corner location shown on the sketch:

On 6-16-97 found a GM 0.15' Below asphalt surface
ON Cleveland south of Buford running WEST

left monument as found lowered monument removed monument (explain)

On _____ placed a _____

SKETCH OF REFERENCE TIES
SEE FB 1716 p. 41



Statement of evidence relative to this corner is available from St. Paul Public Works Dept., Survey Division RW, PL, ME

I hereby certify that this document and the data contained herein was prepared by me or under my direct supervision.

William J. Cutting 6/18/97
SIGNATURE DATE

Registration No. _____

- Land Surveyor County Surveyor
 Professional Engineer
 Chief Surveyor, City of St. Paul

Office of The County Recorder, County of Ramsey
I hereby certify that this document was filed in the county

Recorders office at _____ m. on the _____ day of _____

County Recorder _____

By _____, Deputy

DOCUMENT NUMBER _____