

CERTIFICATE OF LOCATION OF GOVERNMENT CORNER

CITY MON. NO. 0022

OLD INDEX NO. 1501

WEST QTR Corner of Section 20 Township 29 Range 23, 4TH P.M.

STATE OF MINNESOTA, County of Ramsey

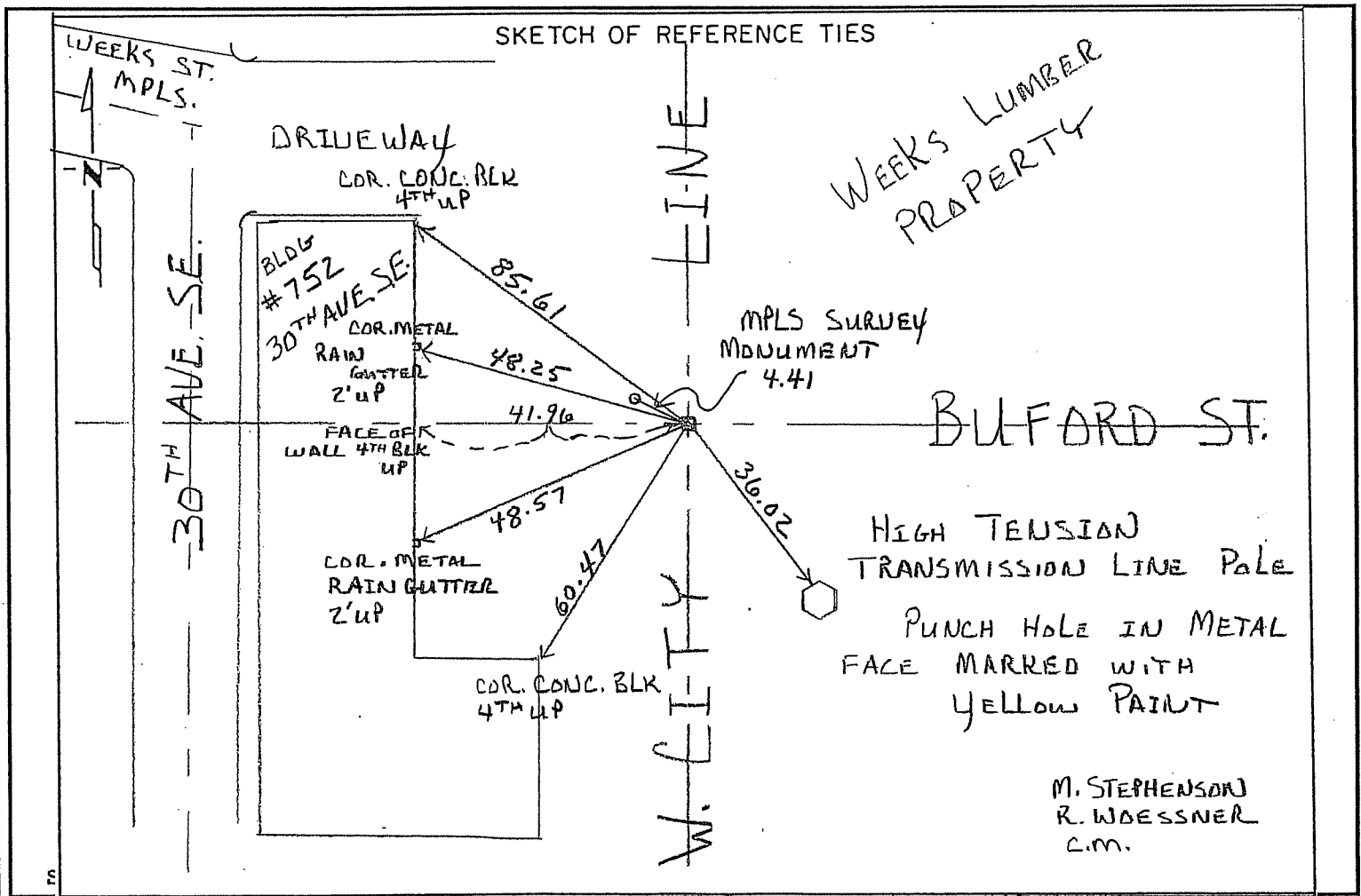
At the corner location shown on the sketch:

On MARCH 30, 2009 found a GM SEC. CORNER BEHIND BLDG.
date

752 30TH AVE S.E. MPLS. SO. END OF WEEKS CO. PROP. @ GRADE

- left monument as found lowered monument removed monument (explain)

On MARCH 30, 2009 placed NEW TIES, PHOTOS, GPS
date



I hereby certify that this document and the data contained herein was prepared by me or under my direct supervision.

[Signature] MAY 7, 2009
SIGNATURE DATE

- Registration No. 44880
- Land Surveyor County Surveyor
- Professional Engineer
- Chief Surveyor, City of St. Paul

Office of The County Recorder, County of Ramsey

I hereby certify that this document was filed in the county

Recorders office at _____ M. on the _____ day of _____

County Recorder _____

By _____, Deputy

DOCUMENT NUMBER _____