

CERTIFICATE OF LOCATION OF GOVERNMENT CORNER

CITY MON. NO. 21

OLD INDEX NO. 1873

N.E. Corner of Section 23 Township 29 Range 22, P.M.

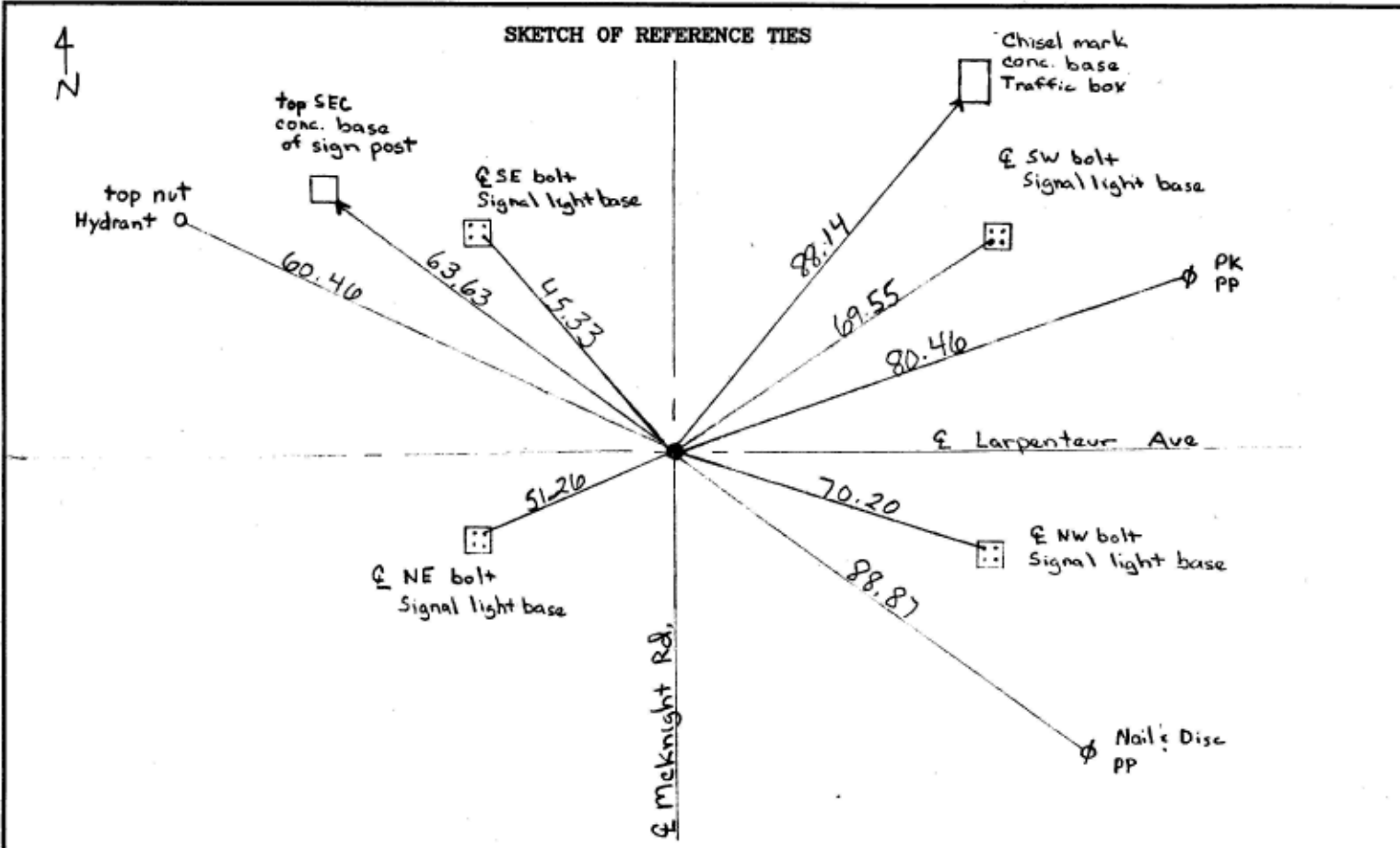
STATE OF MINNESOTA, County of Ramsey

At the corner location shown on the sketch:

On March 9, 2001 found a CIM at grade
date

left monument as found lowered monument removed monument (explain)

On placed a
date



Statement of evidence relative to this corner is available from the St. Paul Public Works Dept., Survey Division RW,MSLLTA

I hereby certify that this document and the data contained herein was prepared by me or under my direct supervision.

Alfred J. Jones 3/14/01
SIGNATURE DATE

Registration No. 13144
 Land Surveyor County Surveyor
 Professional Engineer
 Chief Surveyor, City of St. Paul

Office of The County Recorder, County of Ramsey

I hereby certify that this document was filed in the county Recorders office at M. on the day of

County Recorder
By , Deputy

DOCUMENT NUMBER