

CERTIFICATE OF LOCATION OF GOVERNMENT CORNER

CITY MON. NO. 18

OLD INDEX NO. 1730

N. 1/4 Corner of Section 22 Township 29 Range 22, 4 P.M.

STATE OF MINNESOTA, County of Ramsey

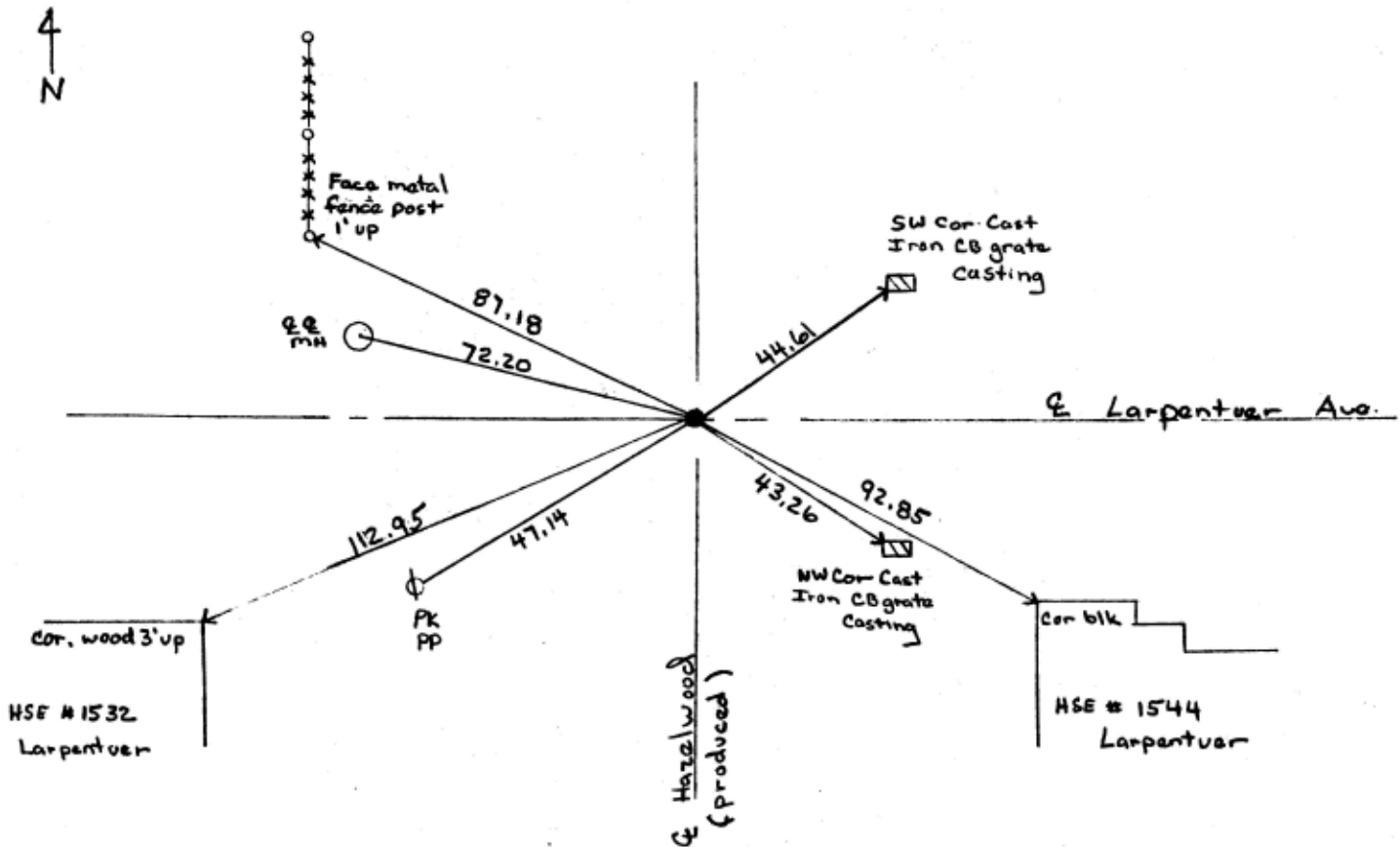
At the corner location shown on the sketch:

On March 8, 2001 found a GIM at grade
date

left monument as found lowered monument removed monument (explain)

On _____ placed a _____
date

SKETCH OF REFERENCE TIES



Statement of evidence relative to this corner is available from the St. Paul Public Works Dept., Survey Division RWMSLLTA

I hereby certify that this document and the data contained herein was prepared by me or under my direct supervision.

Jeffrey J. Jones 3/9/01
SIGNATURE DATE

Registration No. 13144

- Land Surveyor County Surveyor
- Professional Engineer
- Chief Surveyor, City of St. Paul

Office of The County Recorder, County of Ramsey

I hereby certify that this document was filed in the county
Recorders office at _____ M. on the _____ day of _____

County Recorder _____

By _____, Deputy

DOCUMENT NUMBER _____