

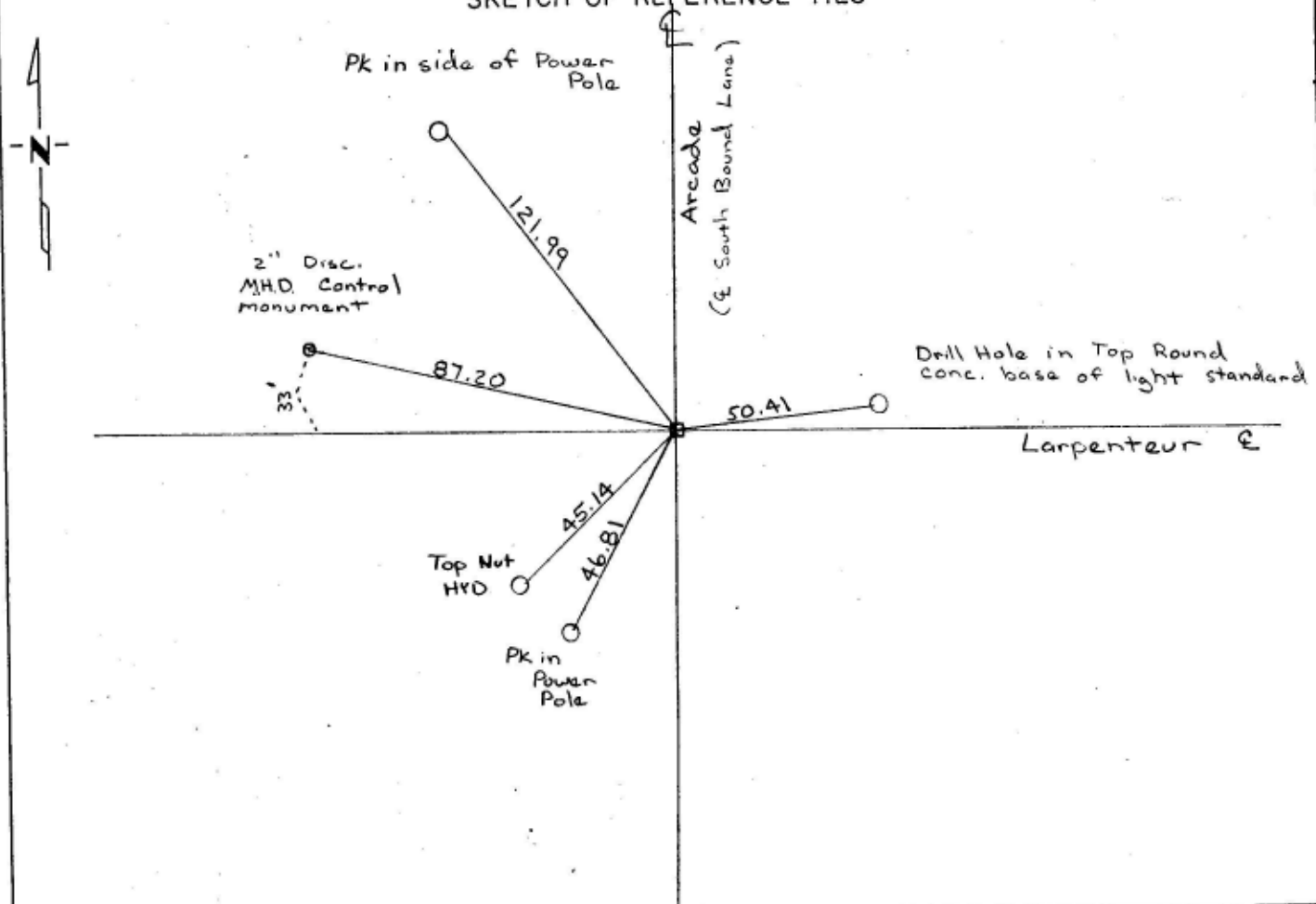
# CERTIFICATE OF LOCATION OF GOVERNMENT CORNER

North West Corner of Section 21, Township 29, Range 22, \_\_\_\_\_ P.M.  
STATE OF MINNESOTA, County of Ramsey

At the corner location shown on the sketch:

- On 5-92 ~~found~~ Thomas & Sons Construction Co. removed  
monument for storm sewer pipe  
 left monument as found,  lowered monument,  removed monument (explain)
- On 6-3-1992 placed a cast iron monument in concrete base  
set to grade

## SKETCH OF REFERENCE TIES



Statement of evidence relative to this corner location is on back of page.

I hereby certify that this document and the data contained herein was prepared by me or under my direct supervision.

*[Signature]*  
SURVEYOR  
22575  
SIGNATURE

Sept 2, 1992  
DATE

- Registration No. \_\_\_\_\_
- Land Surveyor,  Professional Engineer  
 County Surveyor,  County Engineer

OFFICE OF THE COUNTY RECORDER  
County of \_\_\_\_\_

I hereby certify that this document was filed in the Co. Recorders office at \_\_\_\_\_ M. on the \_\_\_\_\_ day of \_\_\_\_\_ A.D., 19 \_\_\_\_\_

County Recorder \_\_\_\_\_  
By \_\_\_\_\_, Deputy  
DOCUMENT NO. \_\_\_\_\_