

# CERTIFICATE OF LOCATION OF GOVERNMENT CORNER

CITY MON. NO. 8

OLD INDEX NO. 1046

N. 1/4 Corner of Section 23 Township 29 Range 23, 4<sup>th</sup> P.M.

STATE OF MINNESOTA, County of Ramsey

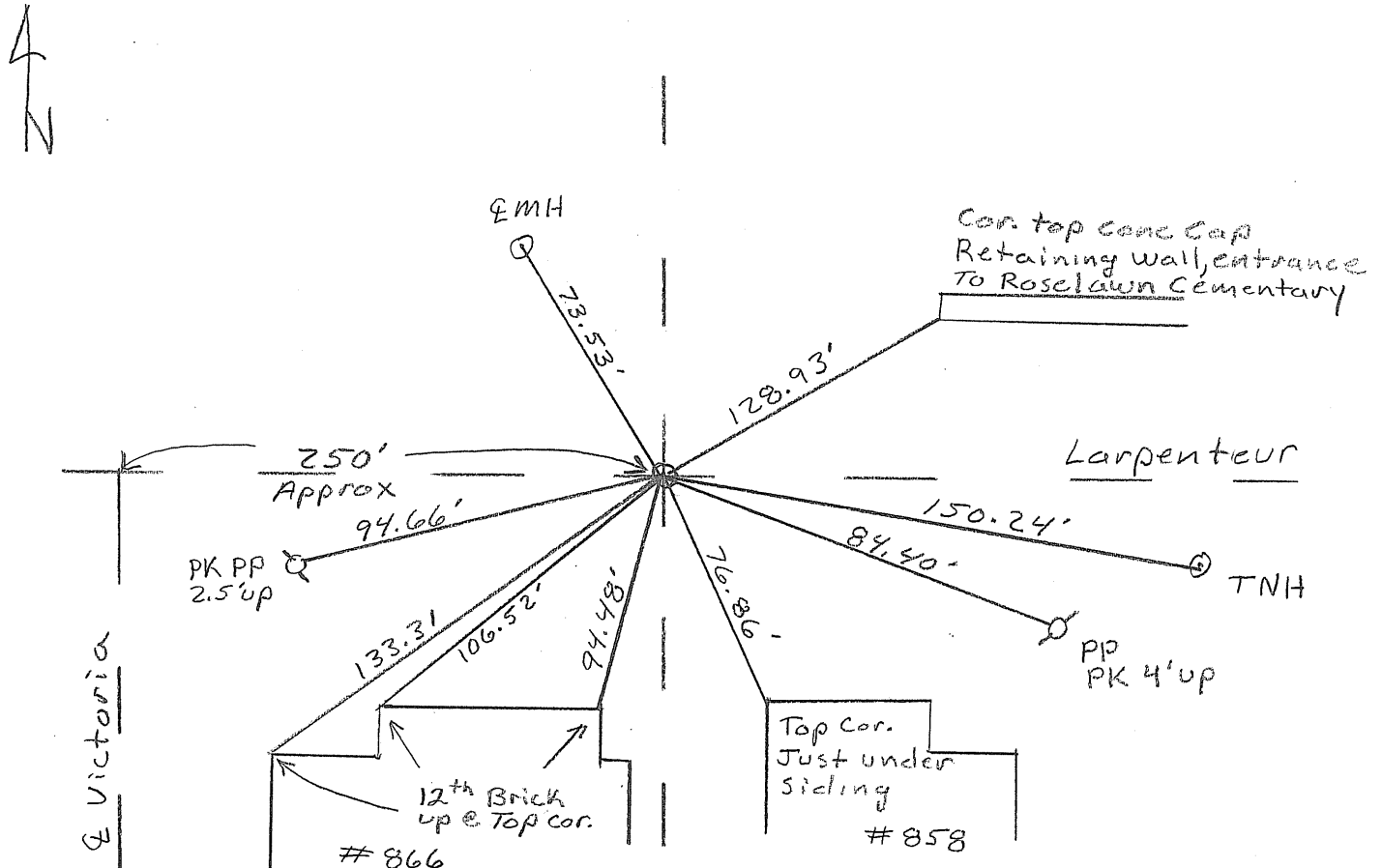
At the corner location shown on the sketch:

On 12-08-09 found a Brass plug @ Grade in the  
date  
Eastbound Lane.

- left monument as found     
  lowered monument     
  removed monument (explain)

On 12-08-09 placed a Newties (sets EDM TIES)  
date  
CREW DN, KL

SKETCH OF REFERENCE TIES



Statement of evidence relative to this corner is available from the St. Paul Public Works Dept., Survey Division

I hereby certify that this document and the data contained herein was prepared by me or under my direct supervision.

  
 SIGNATURE Feb 3, 2010  
DATE

Registration No. 44880

- Land Surveyor       County Surveyor  
 Professional Engineer  
 Chief Surveyor, City of St. Paul

Office of The County Recorder, County of Ramsey

I hereby certify that this document was filed in the county  
 Recorders office at \_\_\_\_\_ M. on the \_\_\_\_\_ day of \_\_\_\_\_

County Recorder \_\_\_\_\_

By \_\_\_\_\_, Deputy

DOCUMENT NUMBER \_\_\_\_\_