

CERTIFICATE OF LOCATION OF GOVERNMENT CORNER

CITY MON. NO. 5

OLD INDEX NO. 2685

Northwest Corner of Section 22 Township 29 Range 23, P.M.

STATE OF MINNESOTA, County of Ramsey

At the corner location shown on the sketch:

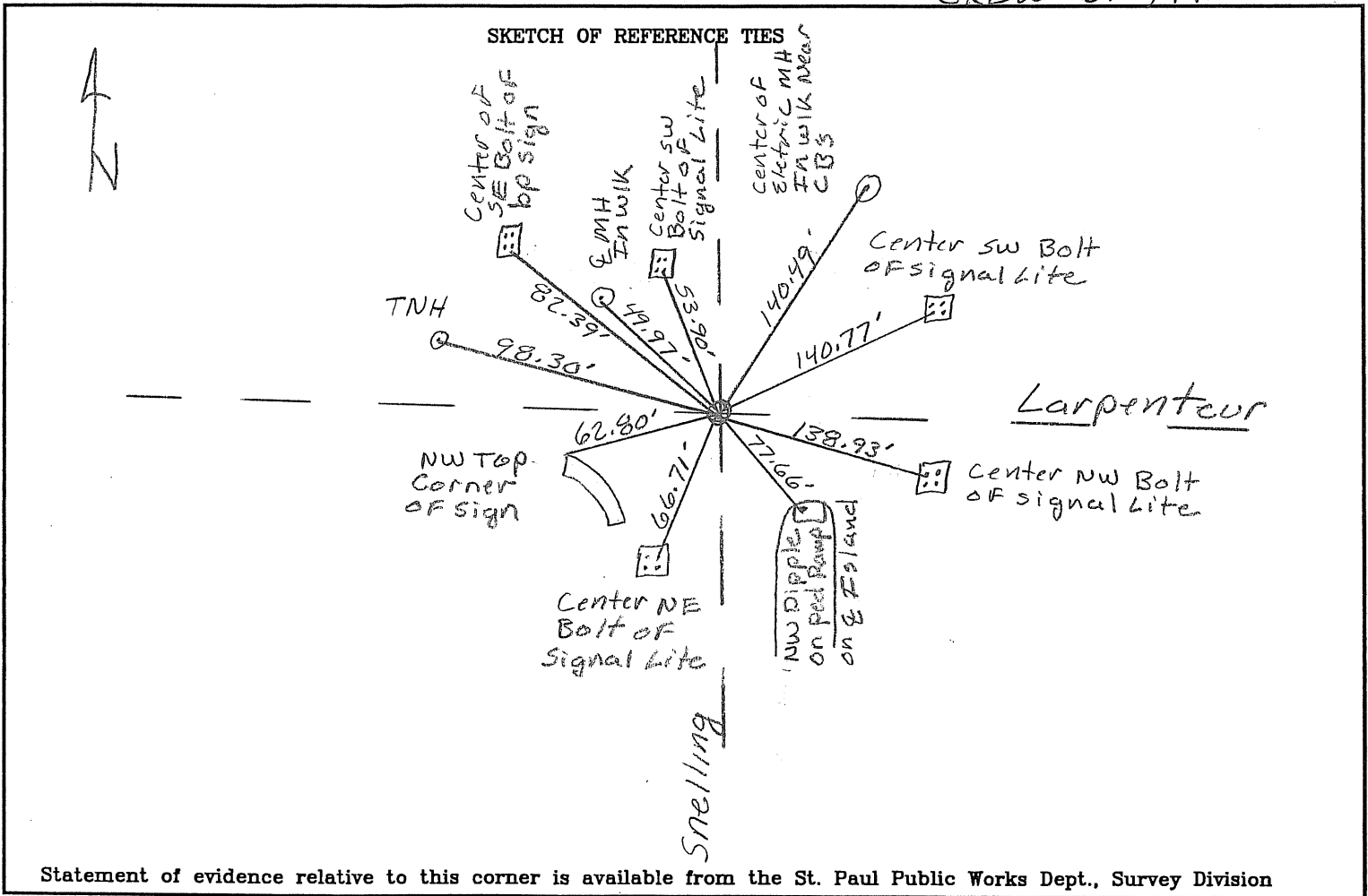
On 11-30-09 found a CIM @ Grade
date

(Set SE EDM TIES)

- left monument as found lowered monument removed monument (explain)

On 11-30-09 placed a New Ties
date

CREW DN, KL



Statement of evidence relative to this corner is available from the St. Paul Public Works Dept., Survey Division

I hereby certify that this document and the data contained herein was prepared by me or under my direct supervision.

[Signature] Feb 3, 2010
SIGNATURE DATE

- Registration No. 44880
- Land Surveyor County Surveyor
- Professional Engineer
- Chief Surveyor, City of St. Paul

Office of The County Recorder, County of Ramsey

I hereby certify that this document was filed in the county
 Recorders office at _____ M. on the _____ day of _____

County Recorder _____

By _____, Deputy

DOCUMENT NUMBER _____