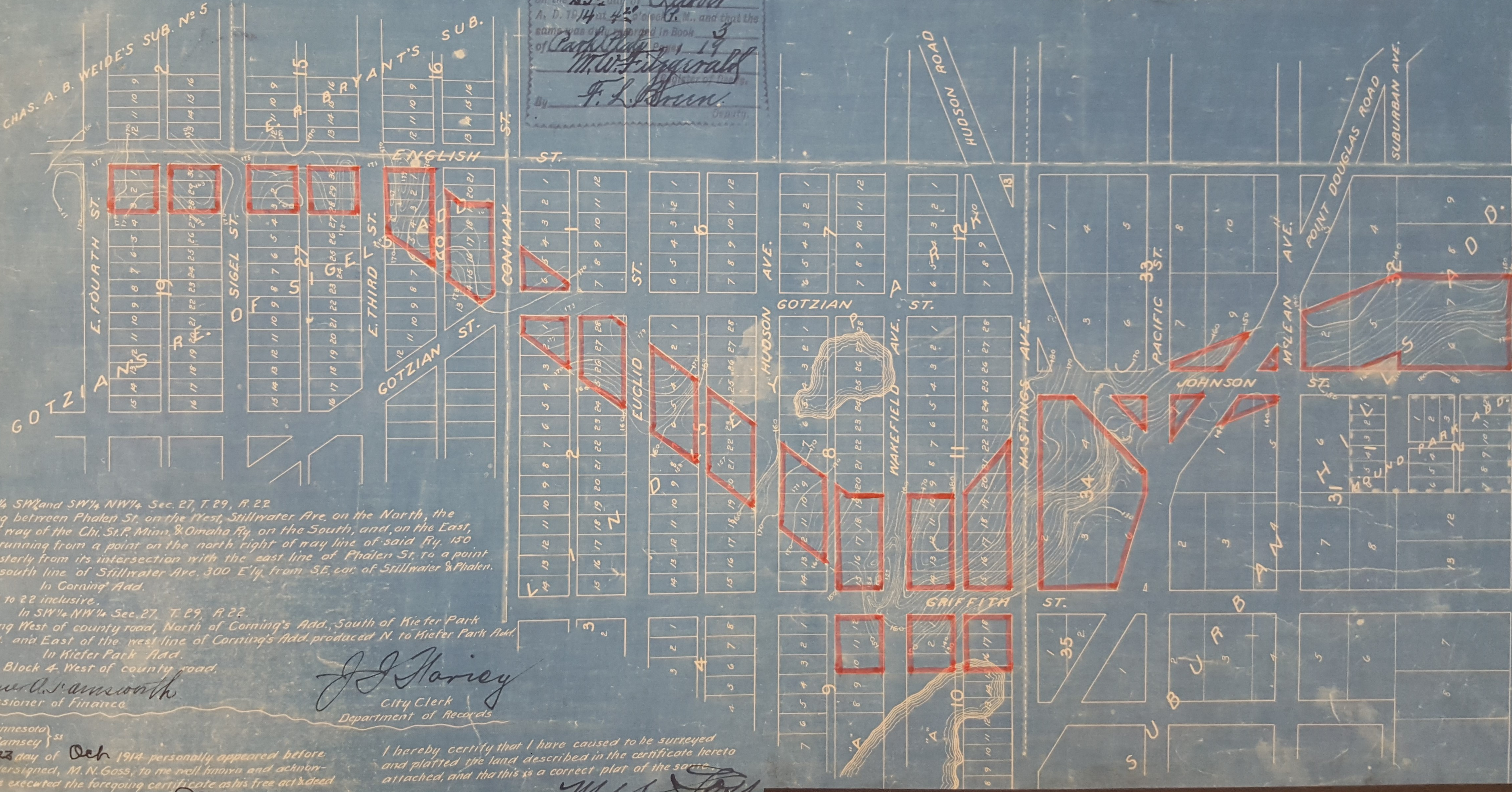


STATE OF MINNESOTA  
 County of Ramsey, Minn.  
 Office of the Register of Deeds.  
 This is to certify that the within instrument  
 was filed for record in the office of St. Paul,  
 on the 23<sup>rd</sup> day of October  
 A. D. 1914 at 4:50 o'clock P. M. and that the  
 same was duly recorded in Book  
Page 19  
M. W. Fitzgerald  
 By F. L. Brown

This is to certify that this plot of lands and grounds has been  
 designated and has been caused to be surveyed and platted  
 by the Board of Park Commissioners of the City of St. Paul  
 for the purposes of a public parkway for the use of said city  
 to be called JOHNSON PARKWAY by and under reso-  
 lutions of said board adopted on the 31<sup>st</sup> day of March  
 1914, and comprising the following tracts of land situated  
 in the City of St. Paul, to wit: -



In NW 1/4 SW 1/4 and SW 1/4 NW 1/4 Sec. 27, T. 29, R. 22  
 All lying between Phalen St. on the West, Stillwater Ave. on the North, the  
 right of way of the Chi. St. P. Minn. & Omaha Ry. on the South, and, on the East,  
 a line running from a point on the north right of way line of said Ry. 150  
 feet Easterly from its intersection with the east line of Phalen St. to a point  
 on the south line of Stillwater Ave. 300 E'ly from S.E. cor. of Stillwater & Phalen.  
 In Corning Add.  
 Lots 1 to 22 inclusive.

In SW 1/4 NW 1/4 Sec. 27, T. 29, R. 22.  
 All lying West of county road, North of Corning's Add., South of Kiefer Park  
 Add. and East of the west line of Corning's Add. produced N. to Kiefer Park Add.  
 In Kiefer Park Add.  
 All of Block 4, West of county road.

*Samuel A. Samson*  
 Commissioner of Finance

*J. J. Starkey*  
 City Clerk  
 Department of Records

Notary Public, Ramsey Co. Minn.  
 My commission expires Oct 29, 1919.

I hereby certify that I have caused to be surveyed  
 and platted the land described in the certificate hereto  
 attached, and that this is a correct plat of the same.

*W. C. Cook*  
 Commissioner of Public Works.