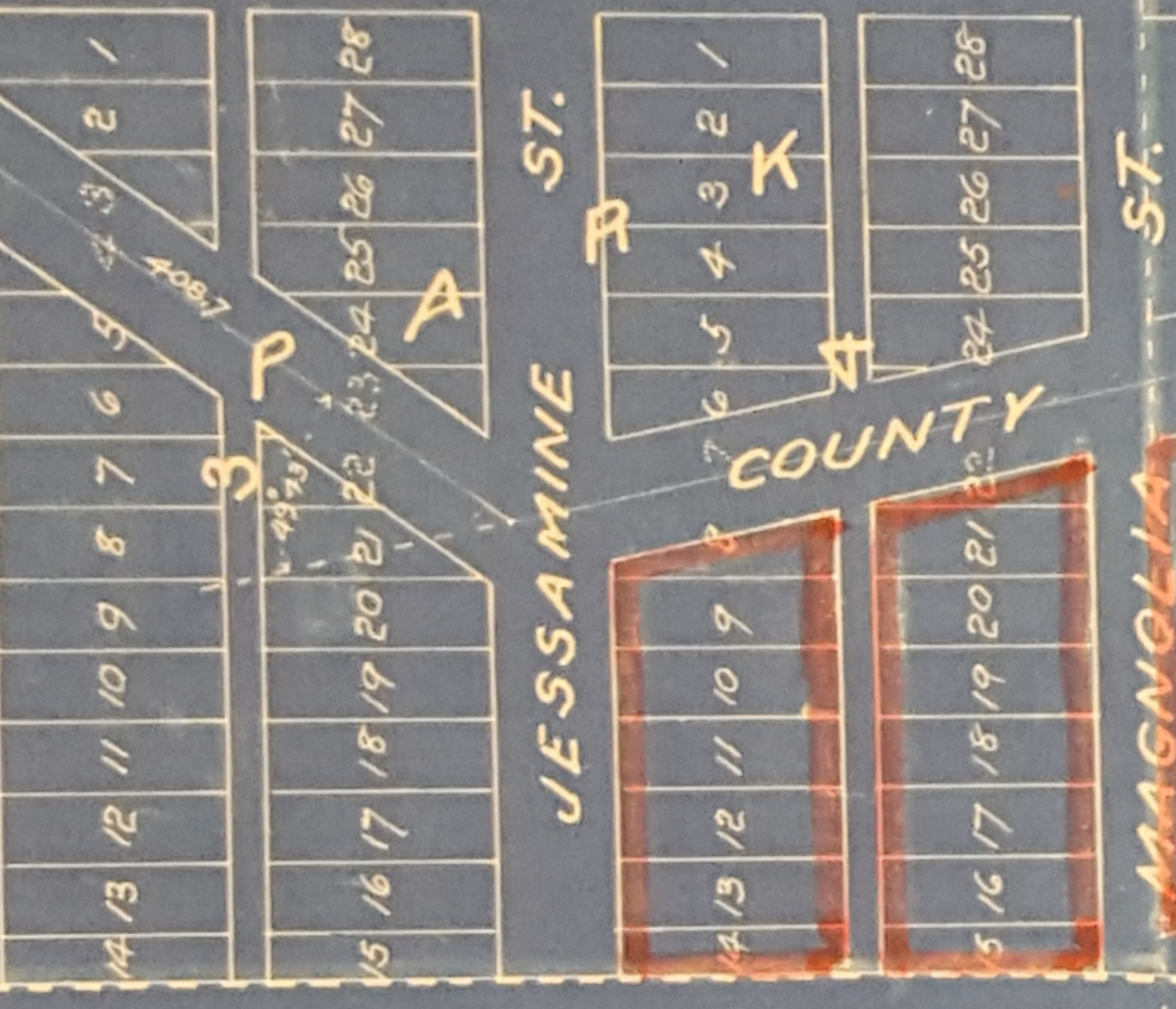


T. 29 R. 22

SHER ST.



JESSAMINE ST.

MAGNOLIA ST.

COUNTY

ROAD

SW 1/4 NW 1/4 Sec. 27

CORNING & S

CORNING AVE.

T. 29

R. 22

PHALEN AVE.

NW 1/4 Sec. 27 T. 29 R. 22

S. P. M. & O. RY.

HARVESTER AVE.

NE 1/4 NE 1/4 Sec. 28 T. 29 R. 22

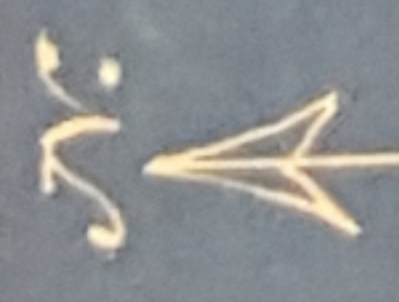
NW. WHEEL & FOUNDRY COMPANY'S ADD.

STILLWATER

PROETZ ADD.

ALLEY

ELWARD



STATE OF MINNESOTA  
 County of Ramsey.  
 Office of the Register of Deeds.  
 This is to certify that the within instrument  
 was filed for record in this office of St. Paul,  
 on the 23<sup>rd</sup> day of October  
 A. D. 1914 at 4:20 o'clock P.M., and that the  
 same was duly recorded in Book  
Page 114 of 20  
W. W. Fitzgerald  
F. L. Brown  
 Deputy