

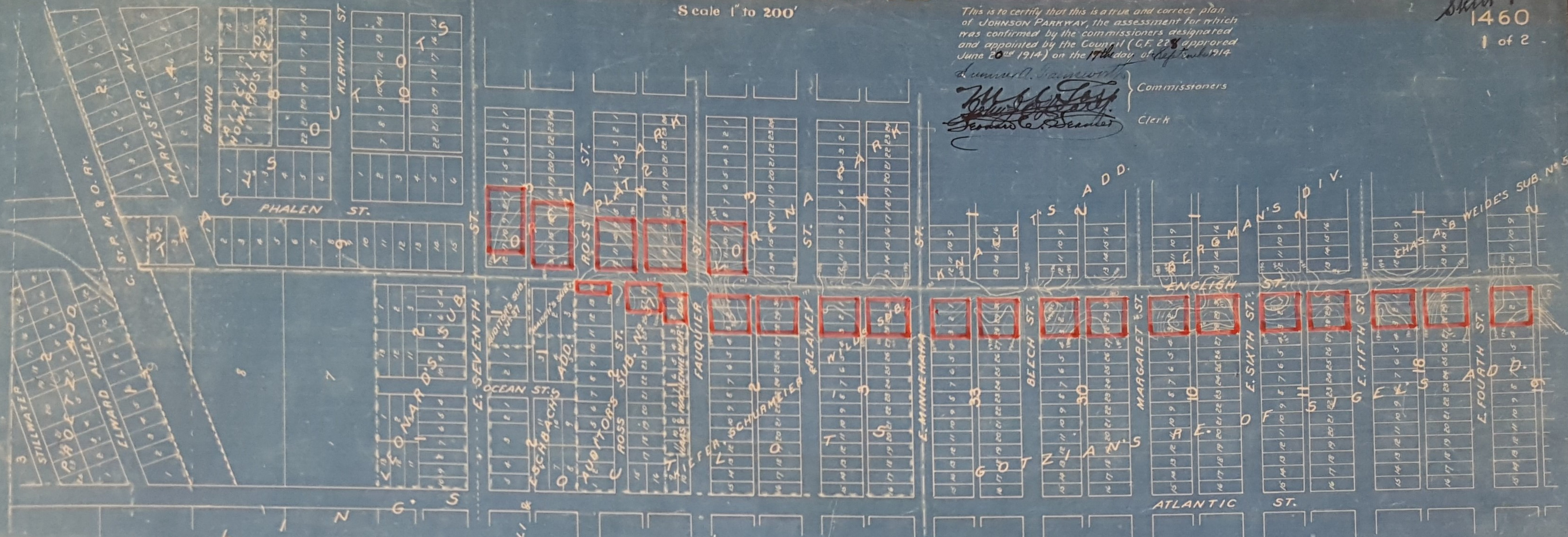
JOHNSON PARKWAY

Scale 1" to 200'

This is to certify that this is a true and correct plan of JOHNSON PARKWAY, the assessment for which was confirmed by the commissioners designated and appointed by the Council (C.F. 228 approved June 20th 1914) on the 17th day of September 1914.

James D. Hammon Commissioners
Wm. J. [Signature] Clerk
James C. [Signature]

1460
1 of 2



This is to certify that this plot of lands and grounds has been designated and has been caused to be surveyed and platted by the Board of Park Commissioners of the City of St. Paul for the purposes of a public parkway for the use of said city to be called JOHNSON PARKWAY by and under resolutions of said board adopted on the 31st day of March 1914, and comprising the following tracts of land situated in the City of St. Paul, to wit: -

- In Mounds Park Add., Lots 7 to 12 inclusive, Block 9
- In NE 1/4 NE 1/4 Sec. 4, T. 28, R. 22 The N. 266 Feet of the W. 1/2
- In Suburban Hills Add., Lots 6 and 7 Block 32, and all those parts of Blocks 31, 32 and 33 that lie within a 200 ft. strip the easterly line of which runs from the NE corner of Lot 7, Block 32 to the NE corner of Johnson and Pacific Sts., and all of Block 34
- In Lindley Park Lots 10 to 19 incl., and that part of Lots 20-21 and 22 that lies SW. of a line which runs from SE corner of Lot 22 to NW corner of Lot 20; all in Bl. 11.
- That part of Blocks 9 and 10 lying East of the line between lots 9 and 10, Bl. 9, and said line produced South through Bl. 10.
- Lots 15 to 19 incl. of Bl. 8 and all that part of Blocks 1-2-5 and 8 that lies within a 100 foot strip, the NW. ly. line of which runs from the NE corner of Lot 15-Bl. 8 to the SE corner of Lot 27 Bl. 27 Gotzian's Re. of Sigel's Add.
- In Gotzian's Re. of Sigel's Add. All of Bl. 28 that lies within the 100 foot strip described above, and all of lots 1-18 and 19 of said Bl. outside of said strip; also lots 1-7-8-28-29 and 30 of Blocks 27-19-10-11-10-30-33.
- In Kiefer, Schurmeier & Wild's Sub. Lots 1-2-3-28-29 and 30 in Blocks 2 and 3.
- In Lorena Park Lots 9-10-11 and 12 in Block 3.
- In Lorena Park Plat 2 Lots 9 to 16 incl. Bl. 4, and 7 incl. Bl. 5 in 7 incl. Bl. 3 Auditor's Sub. N^o 37
- Lots 14-27 and 28, Bl. 2
- In Haas & Tachenreimer's Add. Lots 1 and 2.

657
14
October
1914
F. L. Brown

In NW 1/4 SW 1/4 NW 1/4 Sec. 27, T. 29, R. 22. All lying between Phalen St. and [unclear] Ave. on the North, the right of way of the Co. St. P. Min. & Omaha Ry. on the South, and on the East, a line running from a point on the north right of way line of said Ry. 150 feet easterly from its intersection with the east line of Phalen St. to a point on the south line of Stillwater Ave. 300' E. from SE. cor. of Stillwater Phalen.

Lots 7 to 22 inclusive.
In SW 1/4 NW 1/4 Sec. 23, T. 29, R. 22. All lying West of county road, North of Conway's Add. South of Kiefer Park Add. and East of the [unclear] produced N. to Kiefer Park Add.

All of Block 4 West of county road.
J. J. Torrey City Clerk
Wm. J. [Signature] Commissioner of Finance
Wm. J. [Signature] Commissioner of Public Works

