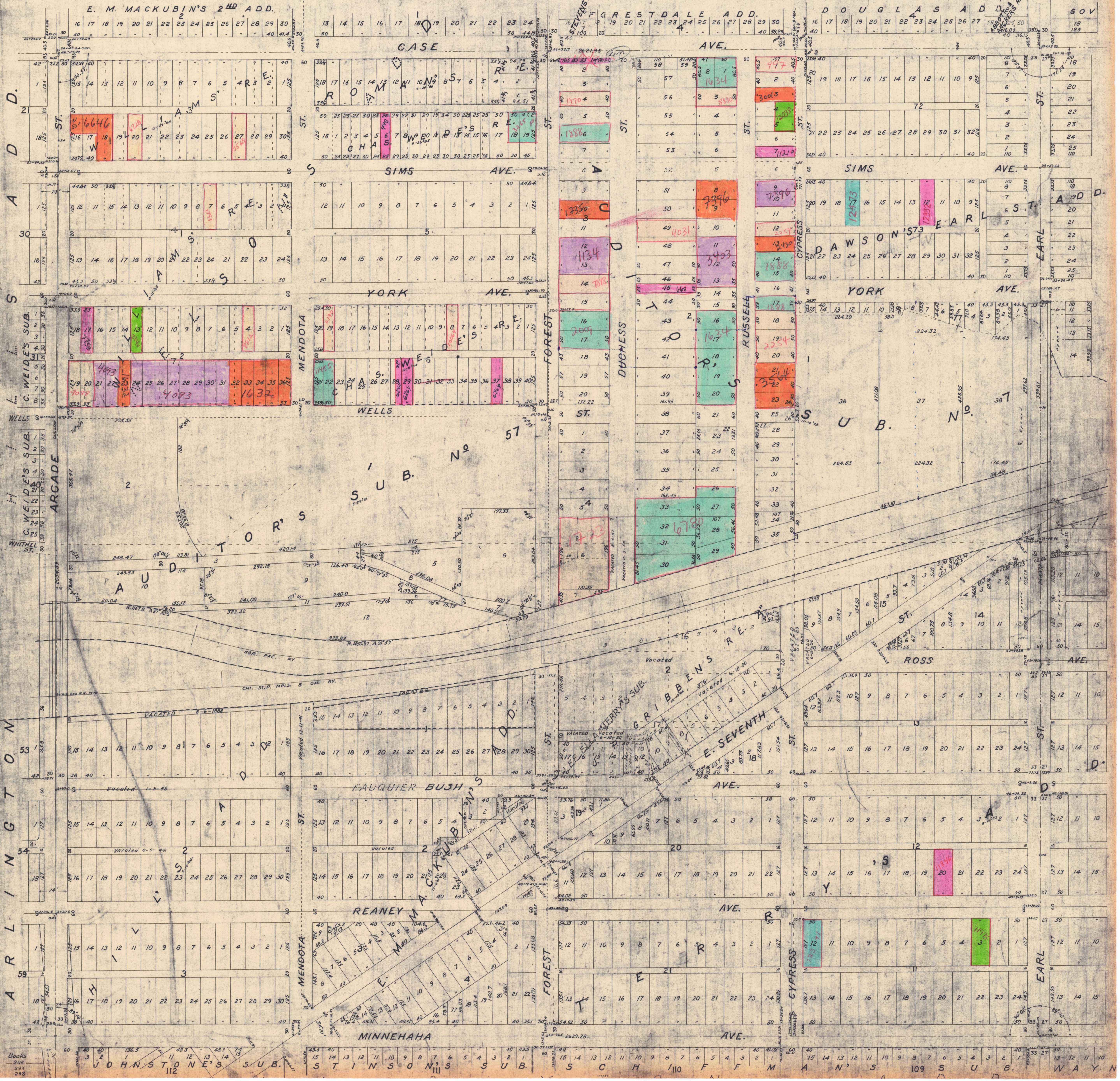


S. W. 1/4 Sec. 28-29-22



91 40

E. M. MACKUBIN'S 2ND ADD.

STEVENS ST.

RESTDALE ADD.

DOUGLAS ADD.

GOV

CASE

AVE.

AD. ST.

ST.

ST.

ST.

ST.

SIMS AVE.

SIMS AVE.

AD. ST.

ST.

ST.

ST.

ST.

YORK AVE.

YORK AVE.

AD. ST.

ST.

ST.

ST.

ST.

WELLS

WELLS

AD. ST.

ST.

ST.

ST.

ST.

SUB. NO. 57

WELLS

AD. ST.

ST.

ST.

ST.

ST.

AU

TORRIS

GRIFFITHS RE.

ROSS AVE.

AD. ST.

ST.

ST.

ST.

ST.

FAUQUER BUSH

AVE.

AD. ST.

ST.

ST.

ST.

ST.

REANEY

AVE.

AD. ST.

ST.

ST.

ST.

ST.

MINNEHAHA

AVE.

AD. ST.

ST.

ST.

ST.

ST.

JOHNSTONE'S SUB.

STINSON'S SUB.

SCHEFFER'S SUB.

WALTON'S SUB.

WALTON'S SUB.

SW 1/4 28-29-22