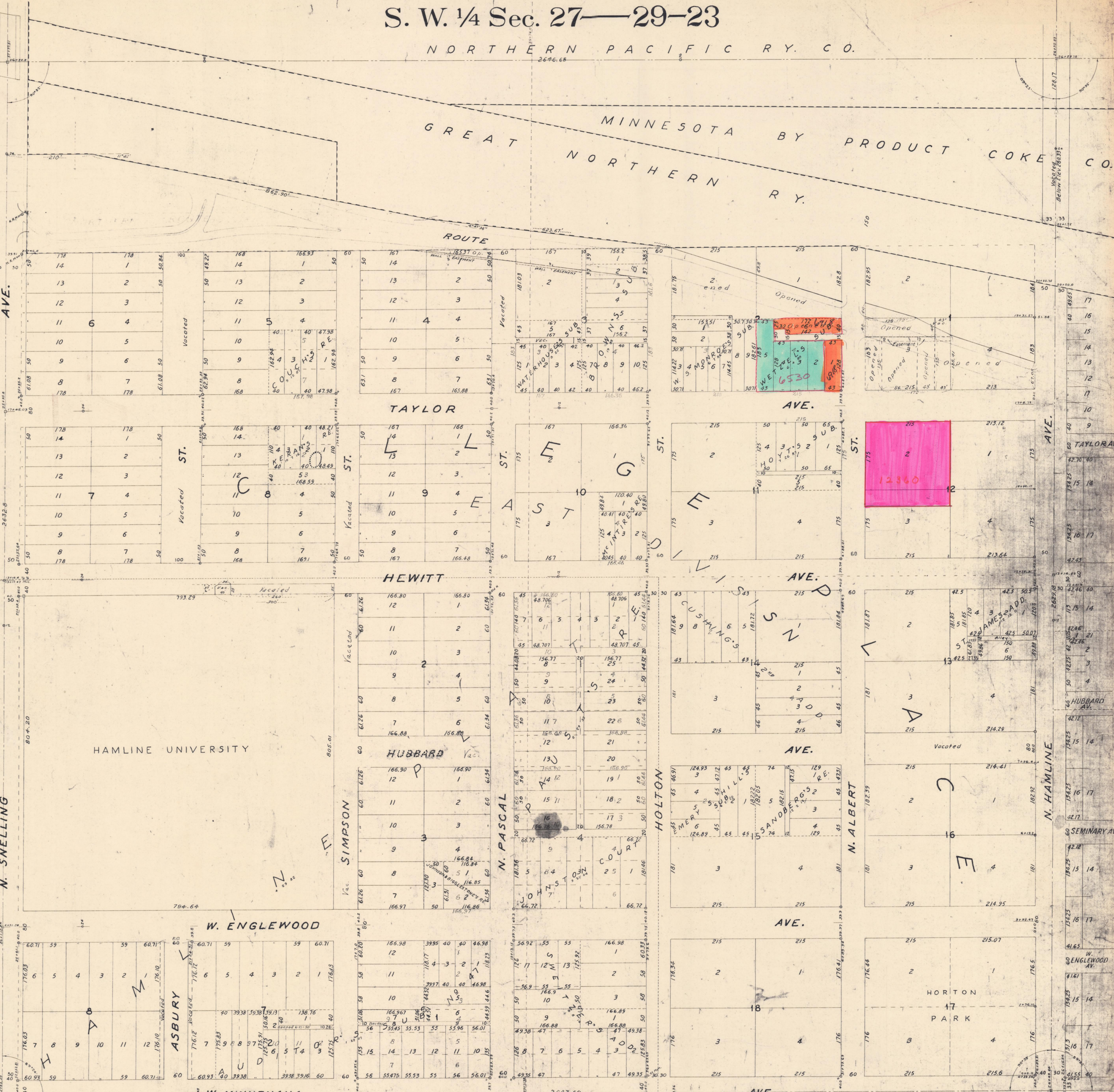


S. W. 1/4 Sec. 27—29—23

NORTHERN PACIFIC RY. CO.

GREAT MINNESOTA BY PRODUCT COKE CO. NORTHERN RY.

TAYLOR'S DIVISION  
LONGS  
HUBBARD  
SNELLING  
COLLEGE  
W. ENGLEWOOD  
W. MINNEHAHA



Books 172-335-345  
HAMLINE SYNDICATE ADD. NO 1  
DOBNER'S RE.  
MCCASKEY'S RE.  
N. PASCAL ST.  
SYNDICATE  
N. ALBERT ST.  
NO 5  
ADD.

SN 1/4 27-29-23