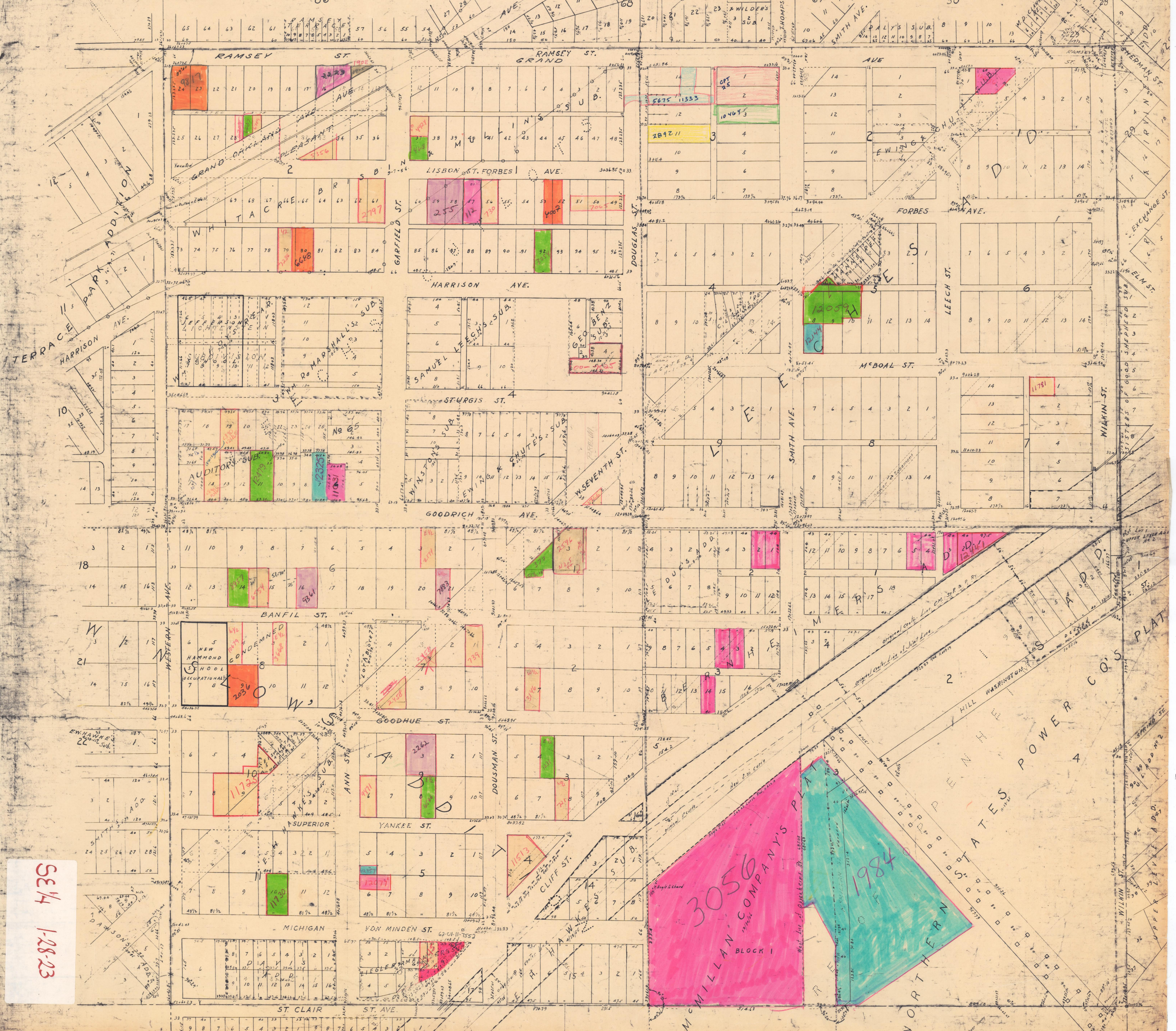


# S.E. 1/4, Sec. 1-28-23.

D A Y T O N & I R V I N E S A D D.

DR 21

86



SE 1/4  
1-28-23

3056  
MILLAN COMPANY'S PLAT  
BLOCK 1  
1984

NORTHERN

POWER CO'S PLAT

RAMSEY ST.  
GRAND AVE.  
FORBES AVE.  
HARRISON AVE.  
STURGIS ST.  
GOODRICH AVE.  
BANFIL ST.  
GOODHUE ST.  
YANKEE ST.  
MICHIGAN ST.  
ST. CLAIR ST.  
DOUGLAS ST.  
SMITH AVE.  
LEECH ST.  
WILKIN ST.  
HILL ST.  
CLIFF ST.  
VON MINDEN ST.  
ST. AVE.

LOT 1-18, 20-24, 26-30, 32-36, 38-42, 44-48, 50-54, 56-60, 62-66, 68-72, 74-78, 80-84, 86-90, 92-96, 98-102, 104-108, 110-114, 116-120, 122-126, 128-132, 134-138, 140-144, 146-150, 152-156, 158-162, 164-168, 170-174, 176-180, 182-186, 188-192, 194-198, 200-204, 206-210, 212-216, 218-222, 224-228, 230-234, 236-240, 242-246, 248-252, 254-258, 260-264, 266-270, 272-276, 278-282, 284-288, 290-294, 296-300, 302-306, 308-312, 314-318, 320-324, 326-330, 332-336, 338-342, 344-348, 350-354, 356-360, 362-366, 368-372, 374-378, 380-384, 386-390, 392-396, 398-402, 404-408, 410-414, 416-420, 422-426, 428-432, 434-438, 440-444, 446-450, 452-456, 458-462, 464-468, 470-474, 476-480, 482-486, 488-492, 494-498, 500-504, 506-510, 512-516, 518-522, 524-528, 530-534, 536-540, 542-546, 548-552, 554-558, 560-564, 566-570, 572-576, 578-582, 584-588, 590-594, 596-600, 602-606, 608-612, 614-618, 620-624, 626-630, 632-636, 638-642, 644-648, 650-654, 656-660, 662-666, 668-672, 674-678, 680-684, 686-690, 692-696, 698-702, 704-708, 710-714, 716-720, 722-726, 728-732, 734-738, 740-744, 746-750, 752-756, 758-762, 764-768, 770-774, 776-780, 782-786, 788-792, 794-798, 800-804, 806-810, 812-816, 818-822, 824-828, 830-834, 836-840, 842-846, 848-852, 854-858, 860-864, 866-870, 872-876, 878-882, 884-888, 890-894, 896-900, 902-906, 908-912, 914-918, 920-924, 926-930, 932-936, 938-942, 944-948, 950-954, 956-960, 962-966, 968-972, 974-978, 980-984, 986-990, 992-996, 998-1000

WILSON  
HARRISON  
SAMUEL KEES  
AUDITORS  
CONDONED  
NEW HAMMOND SCHOOL OCCUPATIONALLY  
MILLAN COMPANY'S PLAT  
BLOCK 1  
1984