

N.W. 1/4 Sec. 31-29-22

ERIN'S OUT LOTS

D R A

LIGHTNER

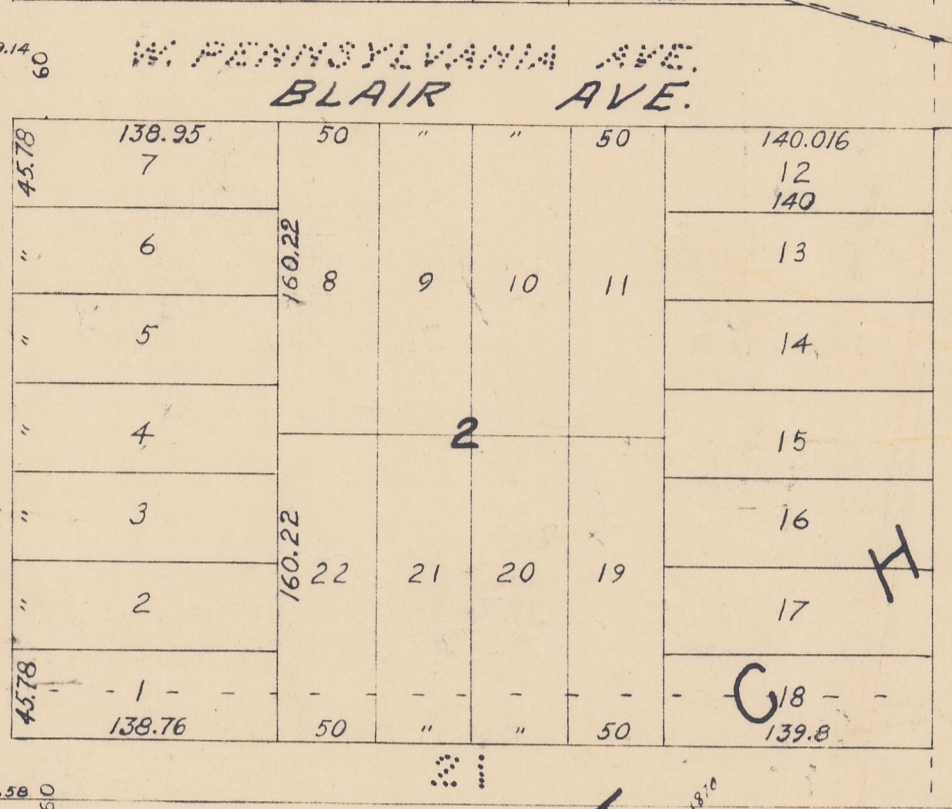
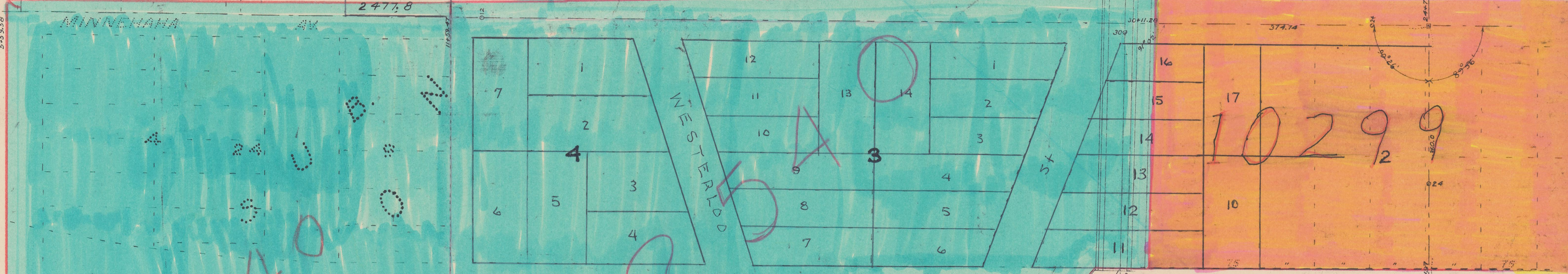
JACKSON

CORTLAND

W. ACKER

E. ACKER

GREAT NORTHERN RY.



W. ARCH ST.

PENNSYLVANIA AVE.

BLVD.

WINTER ST.

COMO AVE.

CHARLES ST.

SHERBURNE AVE.

UNIVERSITY AVE.

STATE CAPITOL

MORIN'S E. W. L.

COMO AVE.

BRECKINRIDGE'S

MAGOFFIN

W. VERN

COMO

CHARLES

SHERBURNE

UNIVERSITY

W. ARCH ST.

PENNSYLVANIA AVE.

BLVD.

WINTER ST.

COMO AVE.

CHARLES ST.

SHERBURNE AVE.

UNIVERSITY AVE.

STATE CAPITOL

ADAM'S

REAR

UNIVERSITY

STATE CAPITOL

ADAM'S

REAR

UNIVERSITY

STATE CAPITOL

ADAM'S

REAR

UNIVERSITY

STATE CAPITOL

ADAM'S

REAR

UNIVERSITY

STATE CAPITOL

ADAM'S

REAR

UNIVERSITY

STATE CAPITOL

NW 1/4 31-29-22

Books 276-283-287