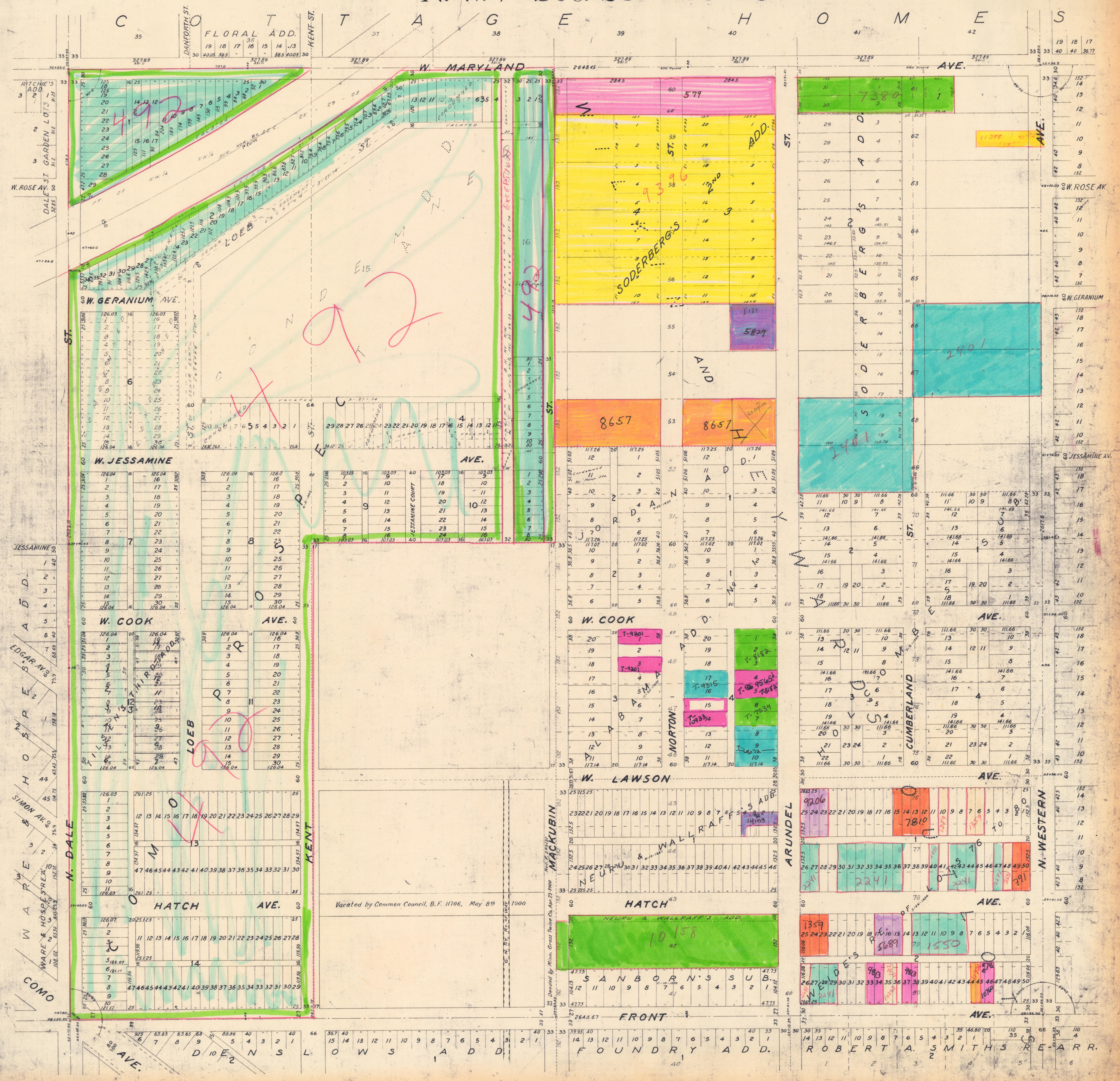


N. W. 1/4 Sec. 25—29—23



N.W. 1/4 Sec. 25-29-23

Vacated by Common Council, B.F. 11706, May 8/9 1900

NEUR & WALLRAFF'S ADD.

HATCH

SANBORN'S SUB

FRONT

ROBERT A. SMITH'S REARR.

ARUNDEL

AVE.

AVE.

AVE.

AVE.

N. WESTERN

AVE.

AVE.

AVE.

AVE.

W. DALE
W. ARE
WARE & HOSCHES
SIMON AV. S
H O S P I T A L
W. S P P E
EDGAR AV. S
JESSAMINE

DALE ST.
GARDEN LOTS
RITCHIE'S ADD.

FLORAL ADD.

W. COOK

W. LAWSON

W. JESSAMINE

W. GERANIUM

W. MARYLAND

W. COOK

W. LAWSON

W. JESSAMINE

W. GERANIUM

W. MARYLAND

W. COOK

W. LAWSON

W. JESSAMINE

W. GERANIUM

W. MARYLAND

W. COOK

W. LAWSON

W. JESSAMINE

W. GERANIUM

W. MARYLAND

W. COOK

W. LAWSON

W. JESSAMINE

W. GERANIUM

W. MARYLAND

W. COOK

W. LAWSON

W. JESSAMINE

W. GERANIUM

W. MARYLAND

W. COOK

W. LAWSON

W. JESSAMINE

W. GERANIUM

W. MARYLAND

W. COOK

W. LAWSON

W. JESSAMINE

W. GERANIUM

W. MARYLAND

W. COOK

W. LAWSON

W. JESSAMINE

W. GERANIUM

W. MARYLAND

W. COOK

W. LAWSON

W. JESSAMINE

W. GERANIUM

W. MARYLAND

W. COOK

W. LAWSON

W. JESSAMINE

W. GERANIUM

W. MARYLAND

W. COOK

W. LAWSON

W. JESSAMINE

W. GERANIUM

W. MARYLAND

W. COOK

W. LAWSON

W. JESSAMINE

W. GERANIUM

W. MARYLAND

W. COOK

W. LAWSON

W. JESSAMINE

W. GERANIUM

W. MARYLAND

W. COOK

W. LAWSON

W. JESSAMINE

W. GERANIUM

W. MARYLAND

W. COOK

W. LAWSON

W. JESSAMINE

W. GERANIUM

W. MARYLAND

W. COOK

W. LAWSON

W. JESSAMINE

W. GERANIUM

W. MARYLAND

W. COOK

W. LAWSON

W. JESSAMINE

W. GERANIUM

W. MARYLAND

W. COOK

W. LAWSON

W. JESSAMINE

W. GERANIUM

W. MARYLAND

W. COOK

W. LAWSON

W. JESSAMINE

W. GERANIUM

W. MARYLAND

W. COOK

W. LAWSON

W. JESSAMINE

W. GERANIUM

W. MARYLAND

W. COOK

W. LAWSON

W. JESSAMINE

W. GERANIUM

W. MARYLAND

W. COOK

W. LAWSON

W. JESSAMINE

W. GERANIUM

W. MARYLAND

W. COOK

W. LAWSON

W. JESSAMINE

W. GERANIUM

W. MARYLAND

W. COOK

W. LAWSON

W. JESSAMINE

W. GERANIUM

W. MARYLAND

W. COOK

W. LAWSON

W. JESSAMINE

W. GERANIUM

W. MARYLAND

W. COOK

W. LAWSON

W. JESSAMINE

W. GERANIUM

W. MARYLAND

W. COOK

W. LAWSON

W. JESSAMINE

W. GERANIUM

W. MARYLAND

W. COOK

W. LAWSON

W. JESSAMINE

W. GERANIUM

W. MARYLAND

W. COOK

W. LAWSON

W. JESSAMINE

W. GERANIUM

W. MARYLAND

W. COOK

W. LAWSON

W. JESSAMINE

W. GERANIUM

W. MARYLAND

W. COOK

W. LAWSON

W. JESSAMINE

W. GERANIUM

W. MARYLAND

W. COOK

W. LAWSON

W. JESSAMINE

W. GERANIUM

W. MARYLAND

W. COOK

W. LAWSON

W. JESSAMINE

W. GERANIUM

W. MARYLAND

W. COOK

W. LAWSON

W. JESSAMINE

W. GERANIUM

W. MARYLAND

W. COOK

W. LAWSON

W. JESSAMINE

W. GERANIUM

W. MARYLAND

W. COOK

W. LAWSON

W. JESSAMINE

W. GERANIUM

W. MARYLAND

W. COOK

W. LAWSON

W. JESSAMINE

W. GERANIUM

W. MARYLAND

W. COOK

W. LAWSON

W. JESSAMINE

W. GERANIUM

W. MARYLAND

W. COOK

W. LAWSON

W. JESSAMINE

W. GERANIUM

W. MARYLAND

W. COOK

W. LAWSON

W. JESSAMINE

W. GERANIUM

W. MARYLAND

W. COOK

W. LAWSON

W. JESSAMINE

W. GERANIUM

W. MARYLAND

W. COOK

W. LAWSON

W. JESSAMINE

W. GERANIUM

W. MARYLAND

W. COOK

W. LAWSON

W. JESSAMINE

W. GERANIUM

W. MARYLAND

W. COOK

W. LAWSON

W. JESSAMINE

W. GERANIUM

W. MARYLAND

W. COOK

W. LAWSON

W. JESSAMINE

W. GERANIUM

W. MARYLAND

W. COOK

W. LAWSON

W. JESSAMINE

W. GERANIUM

W. MARYLAND

W. COOK

W. LAWSON

W. JESSAMINE

W. GERANIUM

W. MARYLAND

W. COOK

W. LAWSON

W. JESSAMINE

W. GERANIUM

W. MARYLAND

W. COOK

W. LAWSON

W. JESSAMINE

W. GERANIUM

W. MARYLAND

W. COOK

W. LAWSON

W. JESSAMINE

W. GERANIUM

W. MARYLAND

W. COOK

W. LAWSON

W. JESSAMINE

W. GERANIUM

W. MARYLAND

W. COOK

W. LAWSON

W. JESSAMINE

W. GERANIUM

W. MARYLAND

W. COOK

W. LAWSON

W. JESSAMINE

W. GERANIUM

W. MARYLAND

W. COOK

W. LAWSON

W. JESSAMINE

W. GERANIUM

W. MARYLAND

W. COOK

W. LAWSON

W. JESSAMINE

W. GERANIUM

W. MARYLAND

W. COOK

W. LAWSON

W. JESSAMINE

W. GERANIUM

W. MARYLAND

W. COOK

W. LAWSON

W. JESSAMINE

W. GERANIUM

W. MARYLAND

W. COOK

W. LAWSON

W. JESSAMINE

W. GERANIUM

W. MARYLAND

W. COOK

W. LAWSON

W. JESSAMINE

W. GERANIUM

W. MARYLAND

W. COOK

W. LAWSON

W. JESSAMINE

W. GERANIUM