

N. W. Sec. 17-28, 23

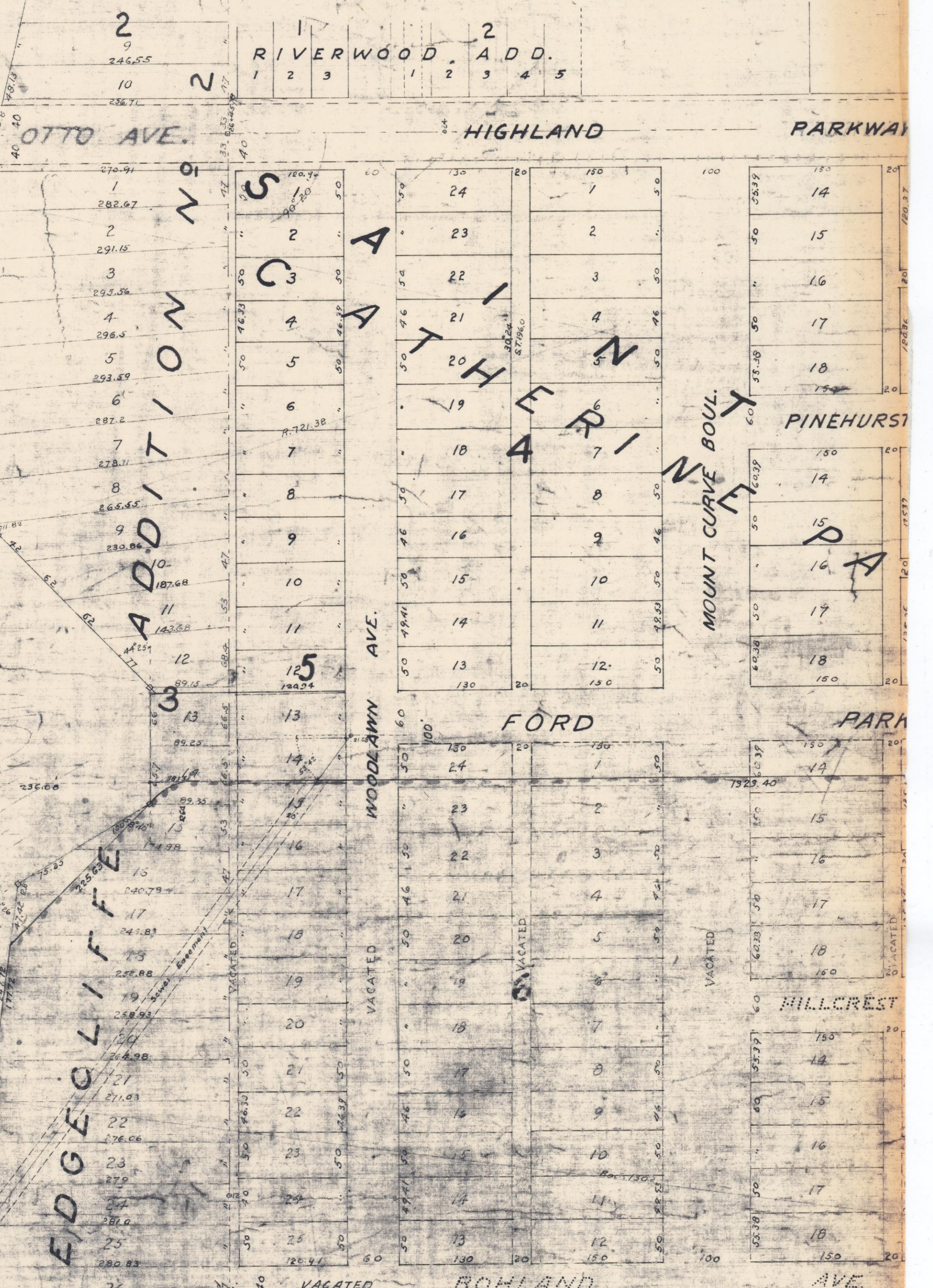
MISSISSIPPI

RIVER

EDGECLIFF

FORD MOTOR COMPANY

SUB. No 87

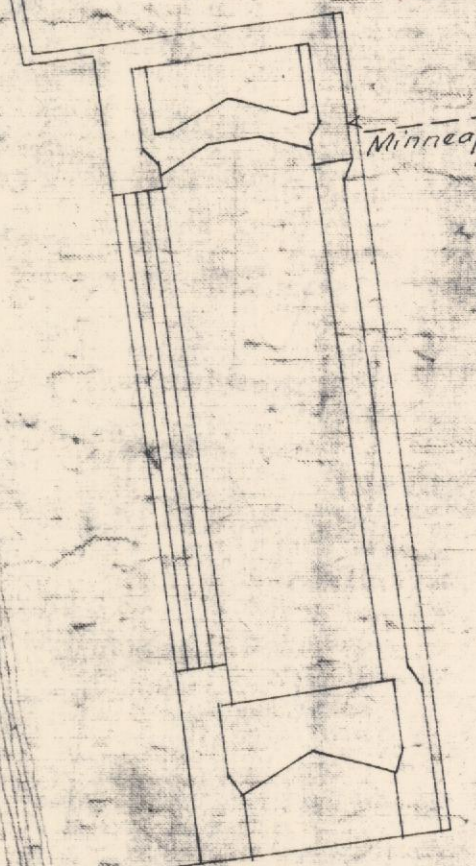


Elevations on this bank are referred to Minneapolis City Plan, which is 13.70% above sea level.

Elevations on this bank are referred to St. Paul Datum Plane, which is 89.4% above sea level.

CREAT. OF DAM 880 ft. long
Above Sea Level 76.9
Minneapolis El. 12.4

POWER HOUSE



NW 1/4 17-28-23