

N 1/2 NW 1/4 SECTION 22 T.29 R.23

15

100% - 3532

KELLER'S RE-AR OF BLK 10

FALCON HEIGHTS

HUSBY

MISC'L

LARPEN TEUR VILLAS

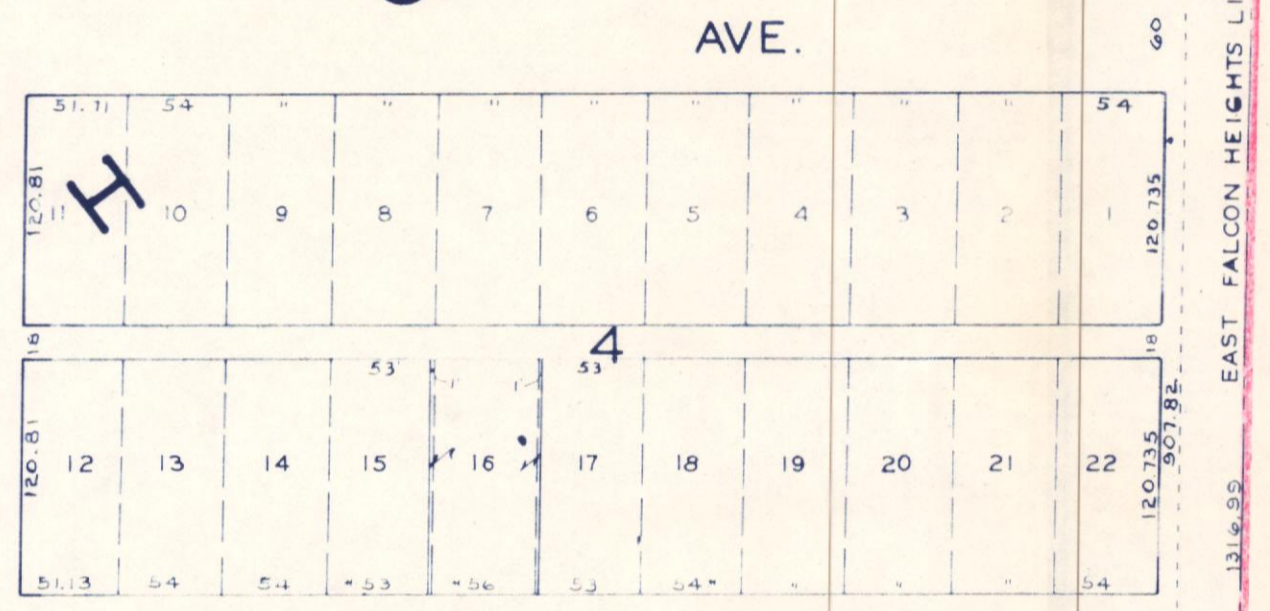
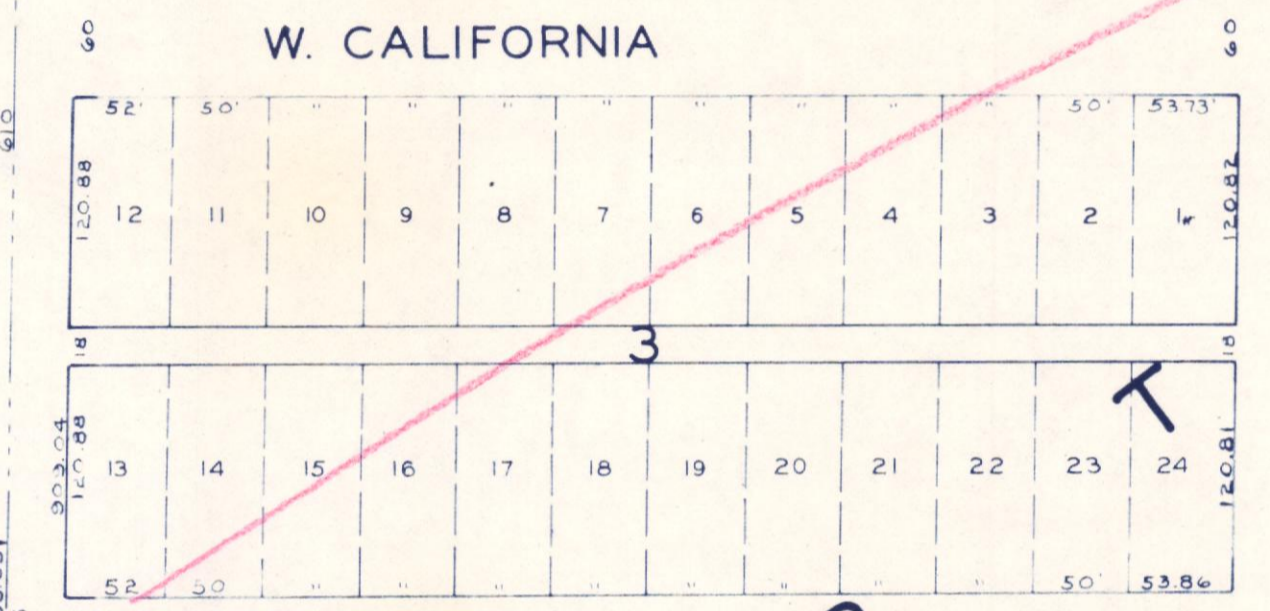
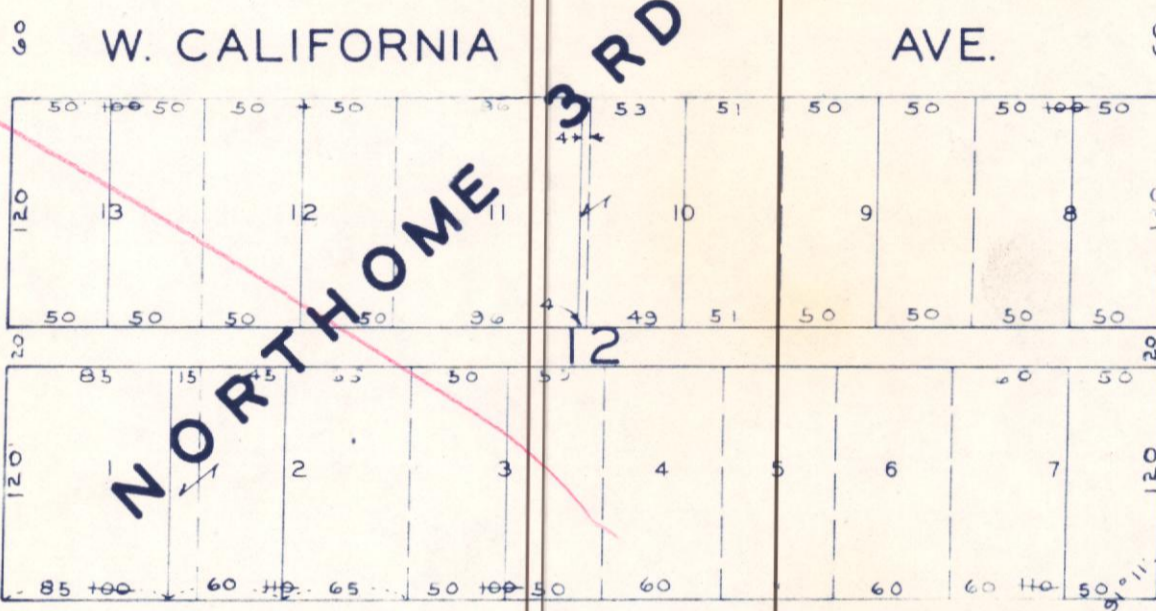
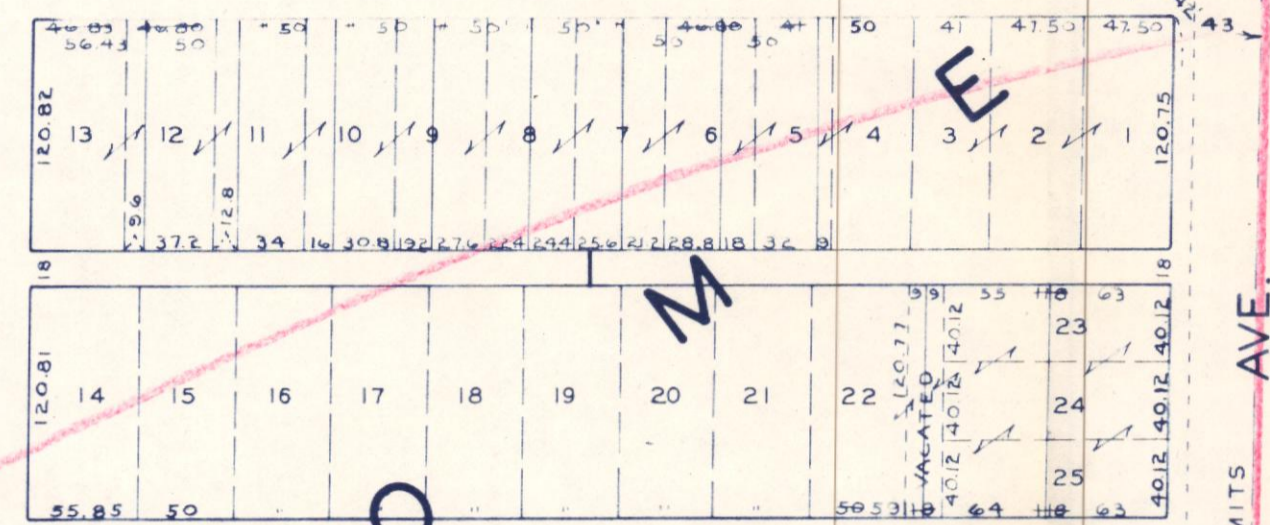
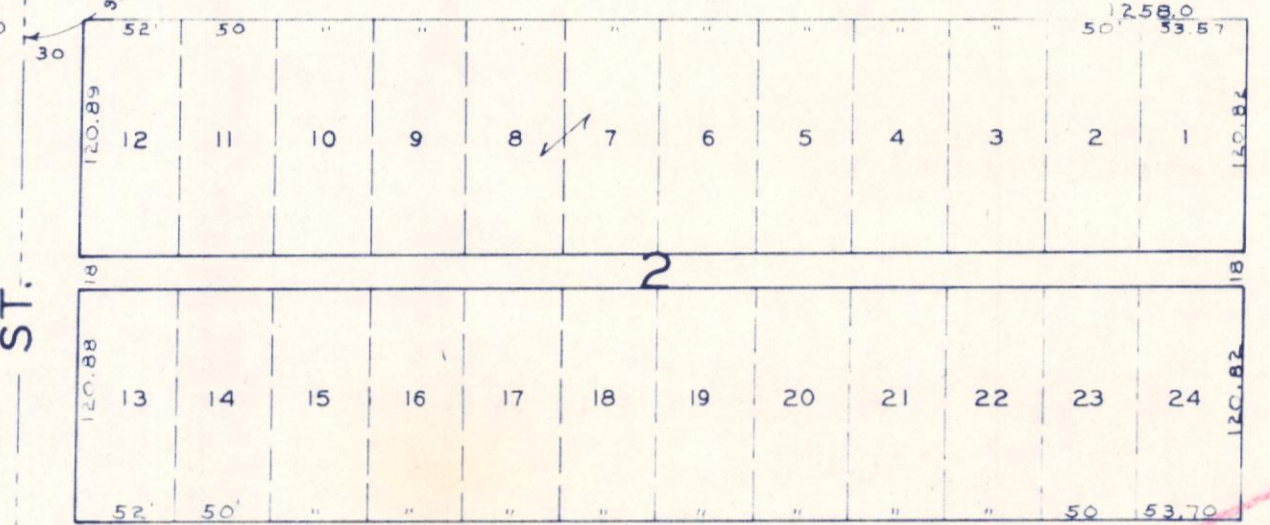
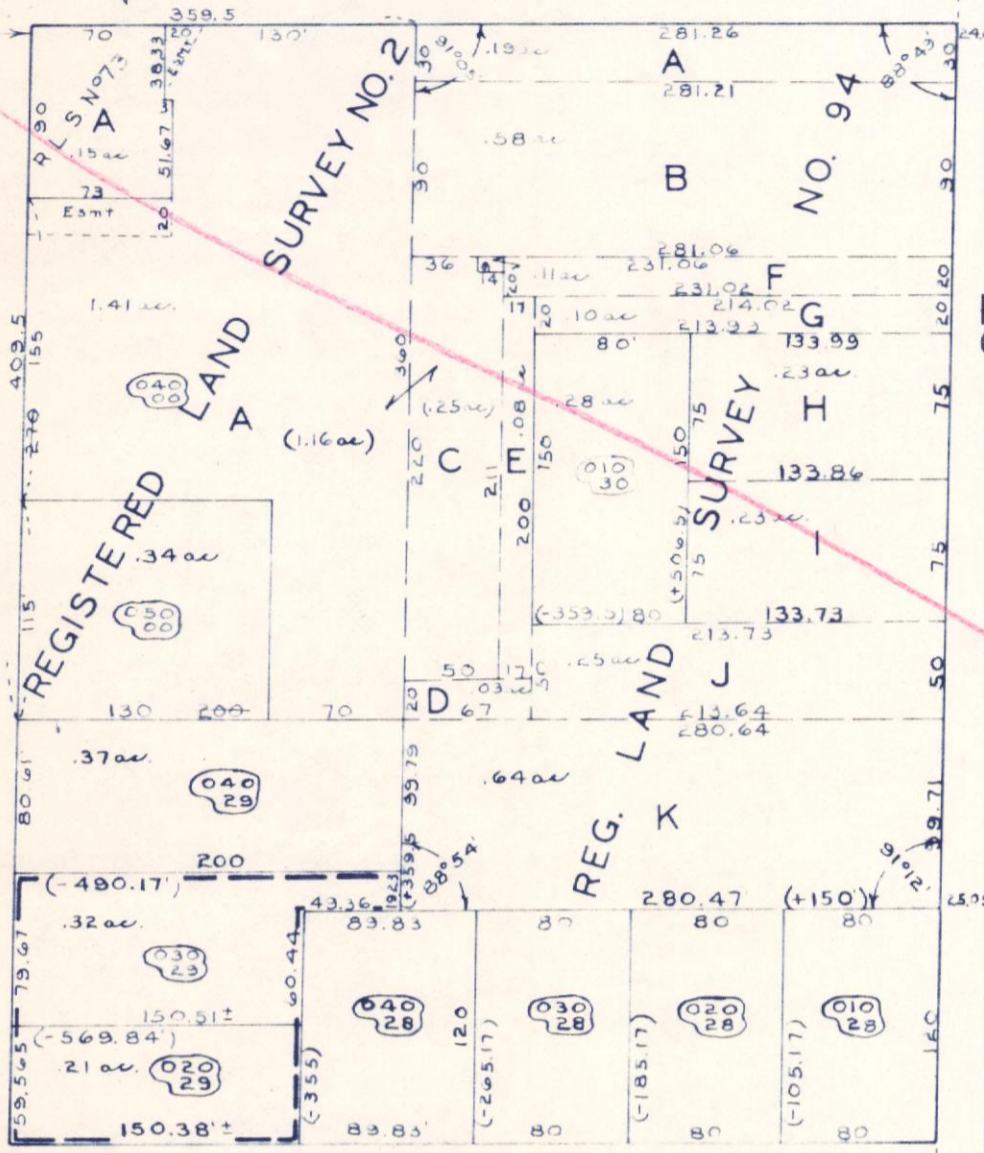
16 15
21 22

W. LARPEN TEUR AVE.

AVE.

W. LARPEN TEUR AVE.

AVE.



S.T.H. 51-125

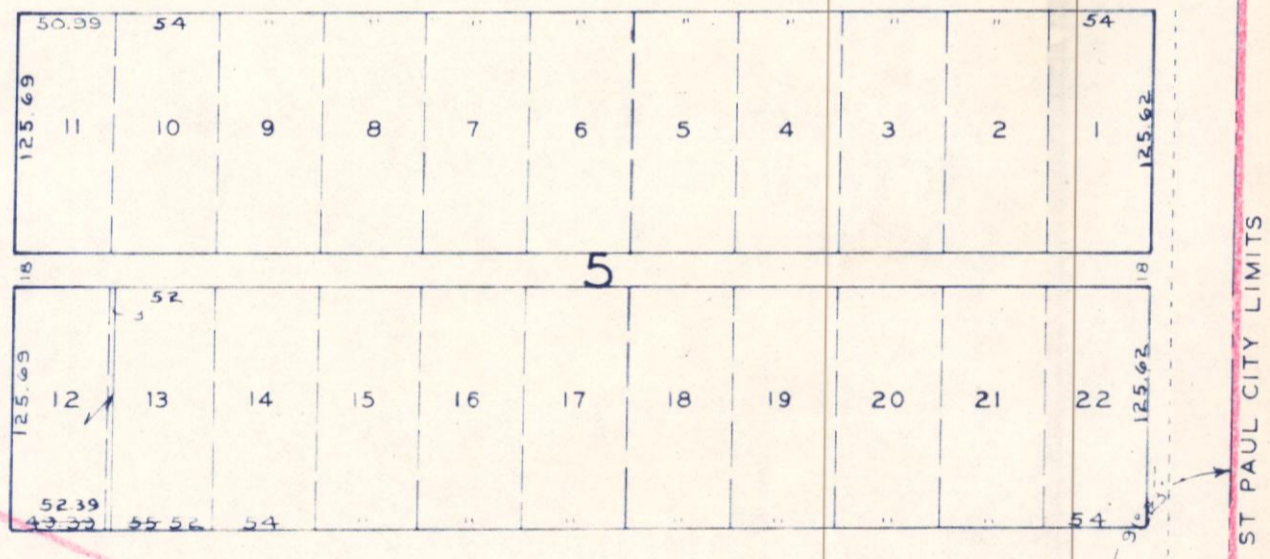
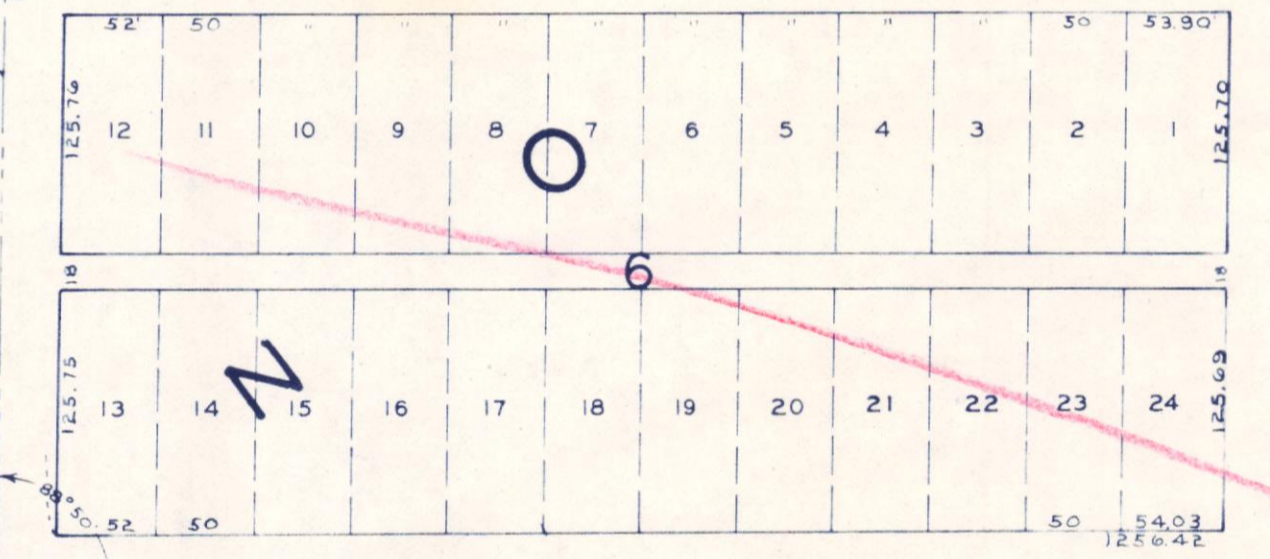
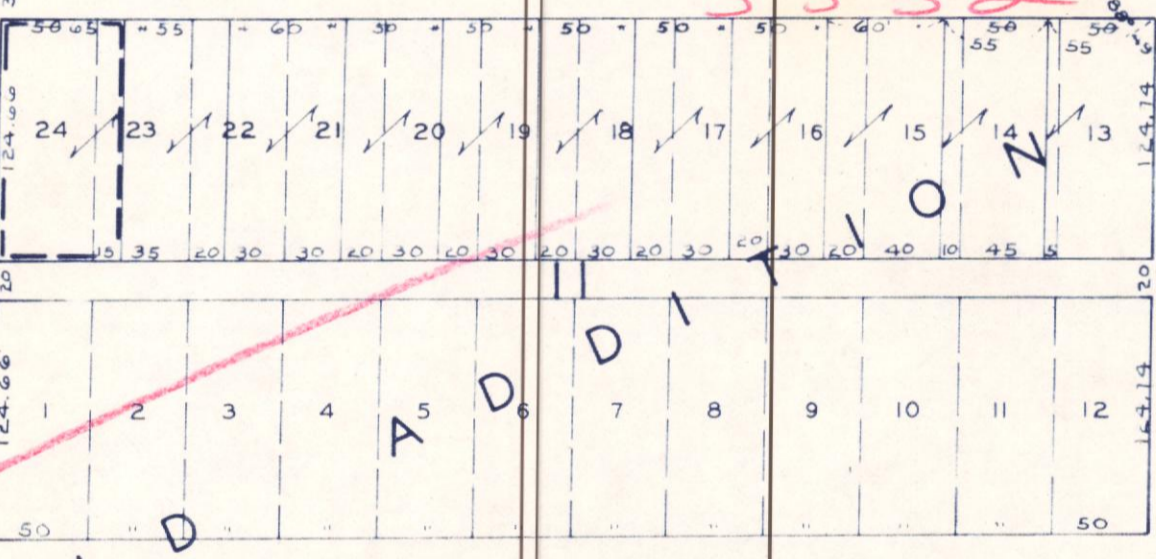
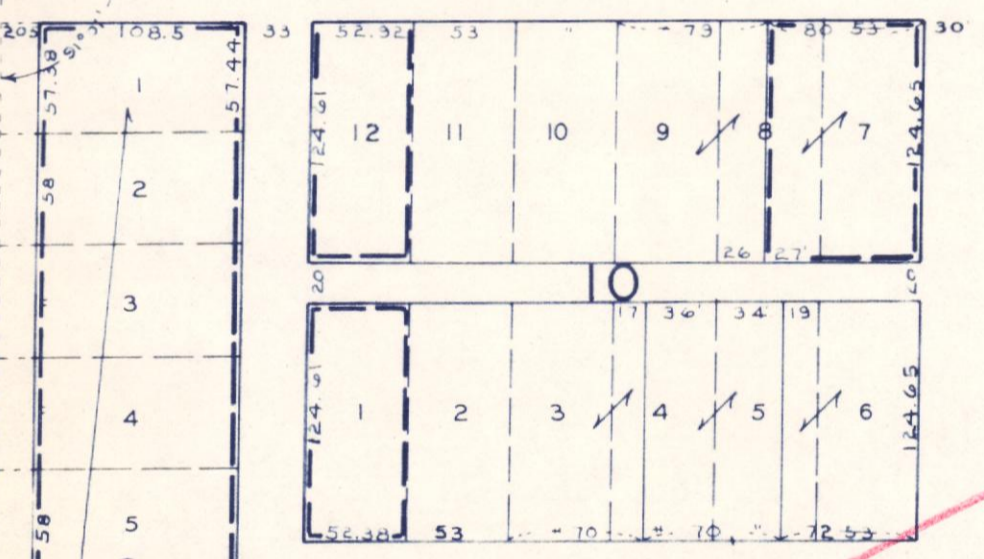
NORTHOME 3RD ADDITION

W. IDAHO AVE.

AVE.

W. IDAHO AVE.

AVE.

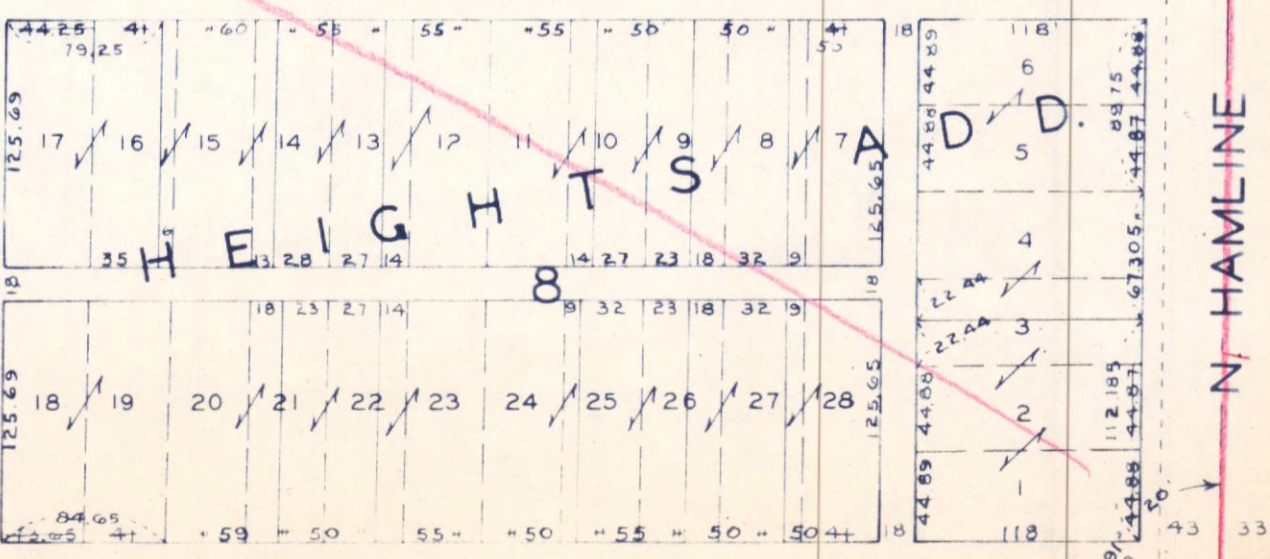
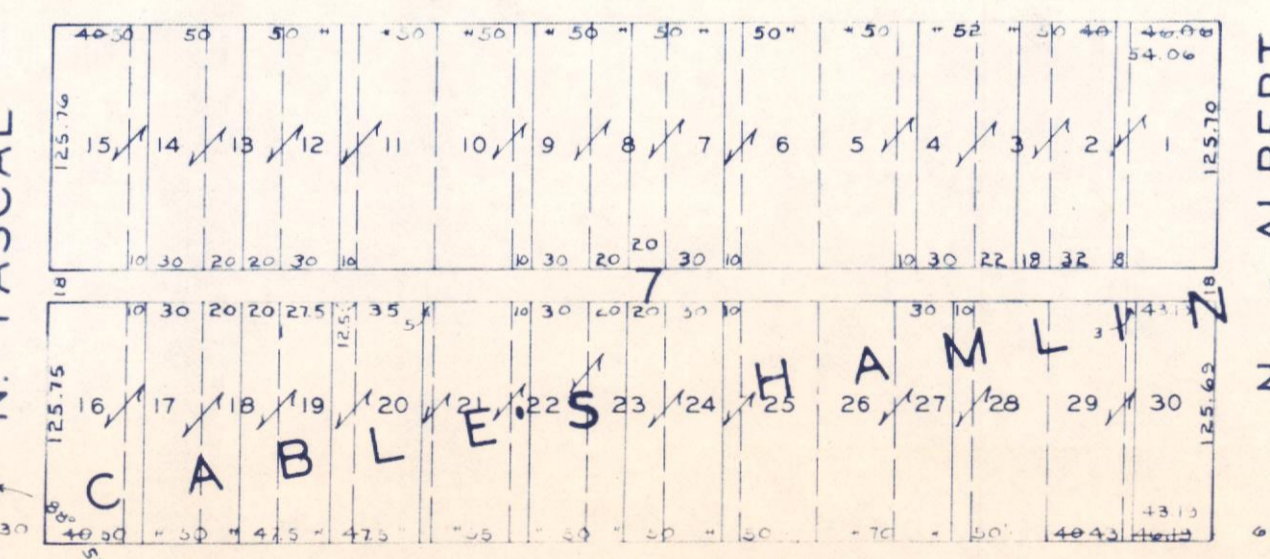
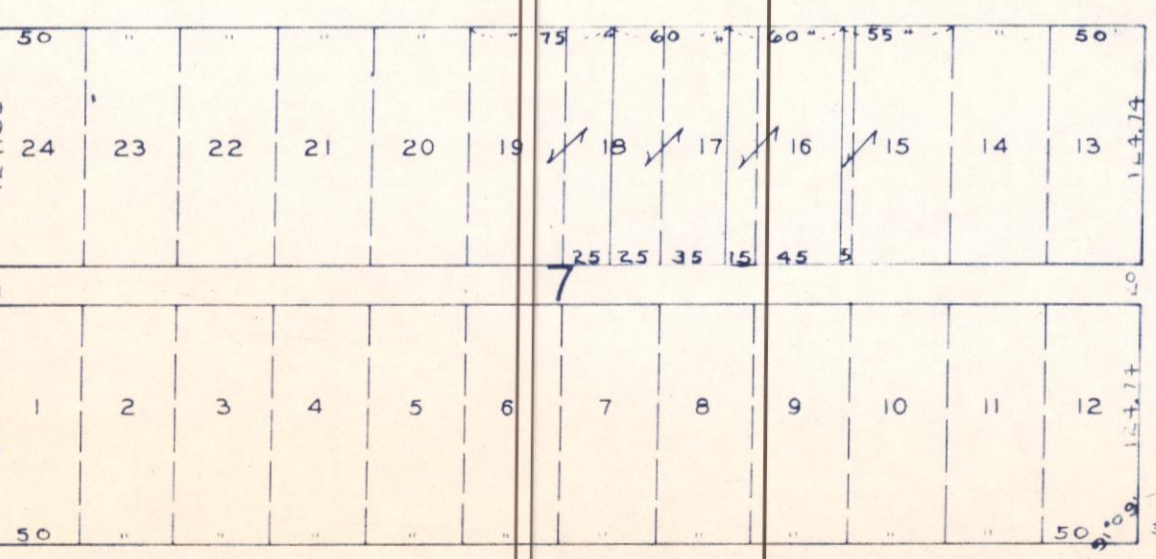
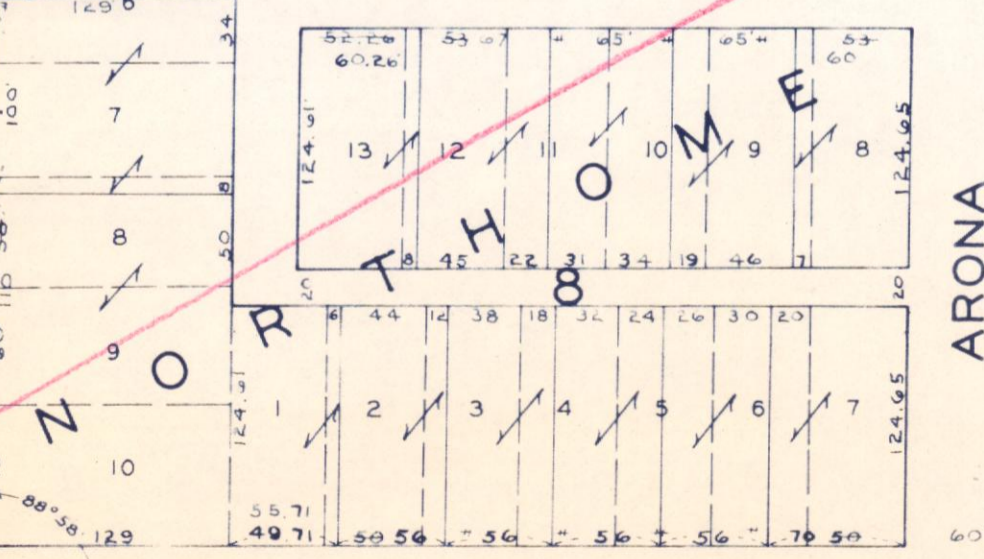


W. IOWA AVE.

AVE.

W. IOWA AVE.

AVE.



W. HOYT AVE.

AVE.

W. HOYT AVE.

AVE.

SC-68-22
M/M NW 1/4

21

NE 1/4
22

STATE FAIR GROUNDS

COURT

ROADS

ASBURY ST.

SIMPSON ST.

HOLTON ST.

SHELDON ST.

ST PAUL CITY LIMITS

EAST FALCON HEIGHTS LIMITS

CHELSEA

HEIGHTS