

# SECTION 9, T.30, R.22.

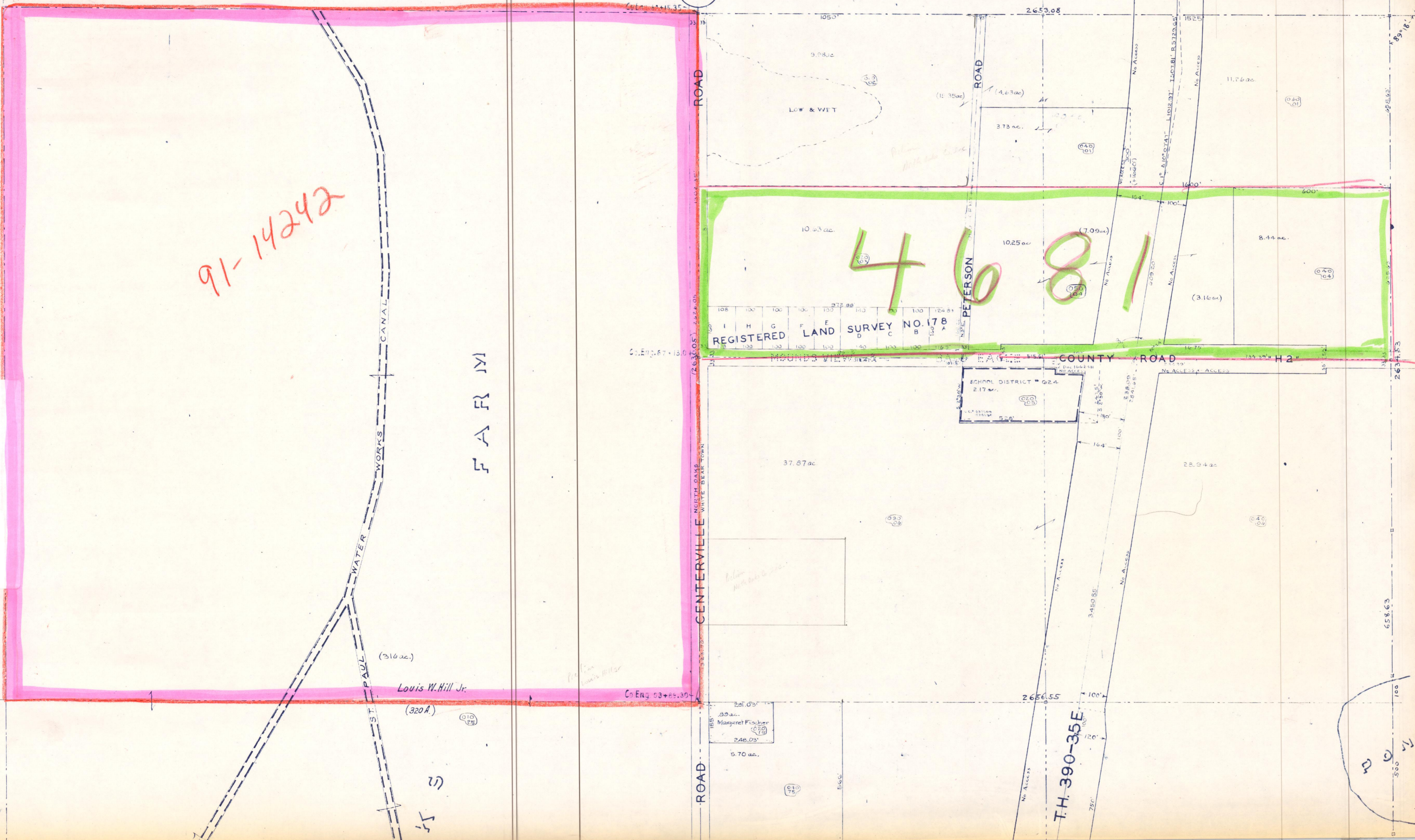
4

91-14242

9-30-22

F A R M

88



Louis W. Hill Jr.

(320A)

ROAD

CENTERVILLE ROAD

ROAD

ROAD

PETERSON ROAD

T.H. 390-35E

REGISTERED LAND SURVEY NO. 178

SCHOOL DISTRICT # 624  
217 ac.

LOW & WET

(316 ac.)

37.87 ac.

10.23 ac.

10.25 ac.

(7.09 ac.)

8.44 ac.

(3.16 ac.)

22.94 ac.

11.26 ac.

Margaret Fischer

5.70 ac.

2656.55

2653.08

1