

RICE CREEK WATERSHED DISTRICT PLANS FOR RWJD1 FISH BARRIER PROJECT RECORD DRAWINGS WHITE BEAR TOWNSHIP, MINNESOTA SEPTEMBER 2020

GOVERNING SPECIFICATIONS

THE 2018 EDITION OF THE MINNESOTA DEPARTMENT OF TRANSPORTATION "STANDARD SPECIFICATIONS FOR CONSTRUCTION", INCLUDING CURRENT SUPPLEMENTAL SPECIFICATIONS, SHALL GOVERN.

DRAWING INDEX

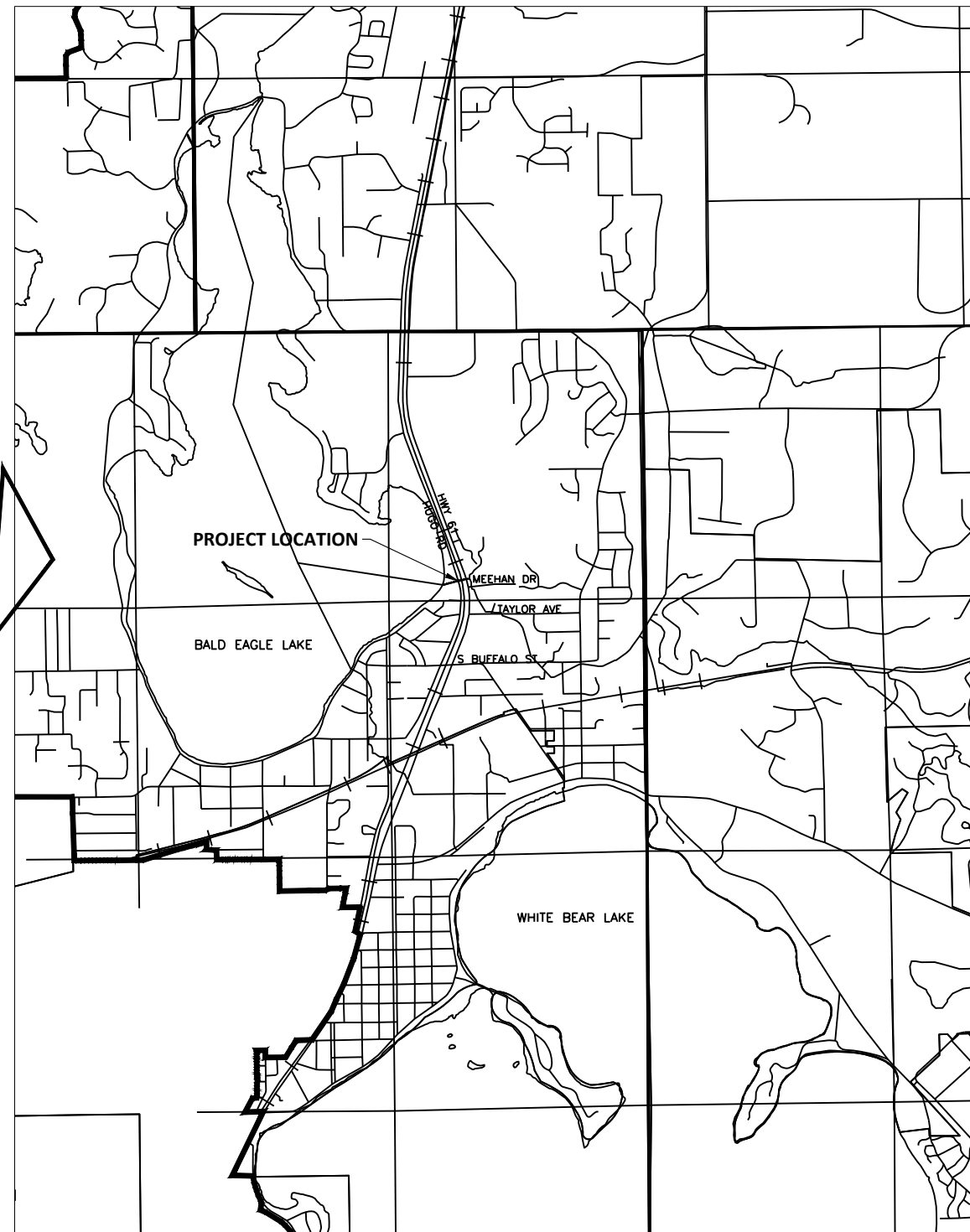
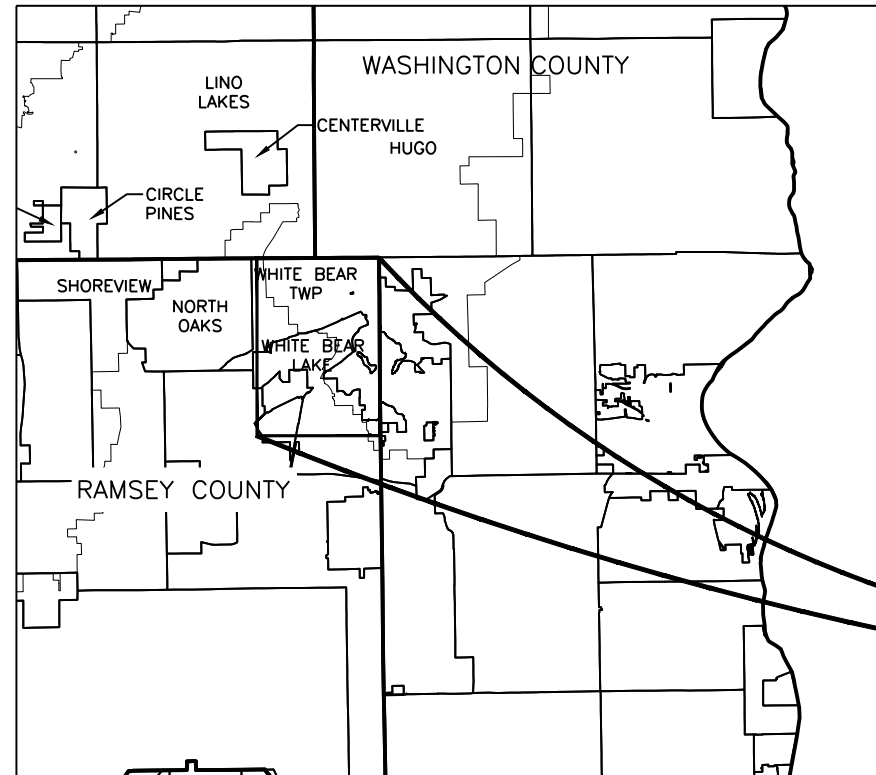
- 1 COVER SHEET
- 2 PLAN & PROFILE
- 3 DETAILS

NOTES

1. **HORIZONTAL CONTROL:** ANY COORDINATES LISTED IN THIS PLAN ARE NAD83 MINNESOTA STATE PLANE, SOUTH ZONE, US FOOT.
2. **VERTICAL CONTROL:** ALL ELEVATIONS ARE NORTH AMERICAN VERTICAL DATUM OF 1988 (NAVD 88).
3. **PROJECT BENCHMARK:** MNDOT DISK (STAMPED 0280 G 1969) IN BRIDGE WING WALL (SE CORNER OF CR 53/SUNSET AVE. NE & BRIDGE #9831 OVER INTERSTATE HIGHWAY 35W) = 929.431 (NAVD88)
4. **TRAFFIC CONTROL:** WORK ASSOCIATED WITH THIS PROJECT WILL BE CONDUCTED ADJACENT TO NUMEROUS ROADWAYS. THE CONTRACTOR SHALL PROVIDE ADEQUATE SIGNAGE FOR TEMPORARY TRAFFIC CONTROL AS IDENTIFIED IN PART 6 OF THE MN MUTCD MANUAL. A TRAFFIC CONTROL PLAN DETAILING VARIOUS TRAFFIC CONTROL SUGGESTIONS HAVE BEEN PROVIDED WITHIN THIS PLAN. AT MINIMUM THE CONTRACTOR SHALL PROVIDE TYPE III BARRICADES WITH SIGNAGE DENOTING "WORK AHEAD" NEAR ALL WORK ON ADJACENT ROADWAYS.

UTILITY NOTES:

1. PRIOR TO ANY EXCAVATION WORK, THE CONTRACTOR IS RESPONSIBLE UNDER MINNESOTA STATE STATUTE 216D AND MINNESOTA RULES CHAPTER 7560 TO CONTACT GOPHER STATE ONE CALL FOR THE LOCATION OF UNDERGROUND UTILITY FACILITIES IN PROXIMITY TO THE EXCAVATION SITE.
2. THE SUBSURFACE UTILITY INFORMATION IN THIS PLAN IS UTILITY QUALITY LEVEL D. THIS UTILITY QUALITY LEVEL WAS DETERMINED ACCORDING TO THE GUIDELINES OF CI/ASCE 38-02, ENTITLED "STANDARD GUIDELINE FOR THE COLLECTION AND DEPICTION OF EXISTING SUBSURFACE UTILITY DATA".
3. CONTACT "GOPHER STATE ONE CALL" FOR LOCATIONS OF BURIED UTILITIES. CALL (651) 454-0002 OR (800) 252-1166.



THESE RECORD DOCUMENTS HAVE BEEN PREPARED BASED ON INFORMATION PROVIDED BY FIELD PERSONNEL. THE DESIGN PROFESSIONAL HAS NOT VERIFIED THE ACCURACY AND/OR COMPLETENESS OF THIS INFORMATION AND SHALL NOT BE RESPONSIBLE FOR ANY ERRORS OR OMISSIONS WHICH MAY BE INCORPORATED HEREIN AS A RESULT.

RECORD DRAWING: 12-03-2020

I hereby certify that this plan, specification, or report was prepared by me or under my direct supervision and that I am a duly Licensed Professional Engineer under the laws of the State of Minnesota.

Signature: *Lisa Odens*
Printed Name: LISA ODENS

Date: 9-25-20
License #: 51685

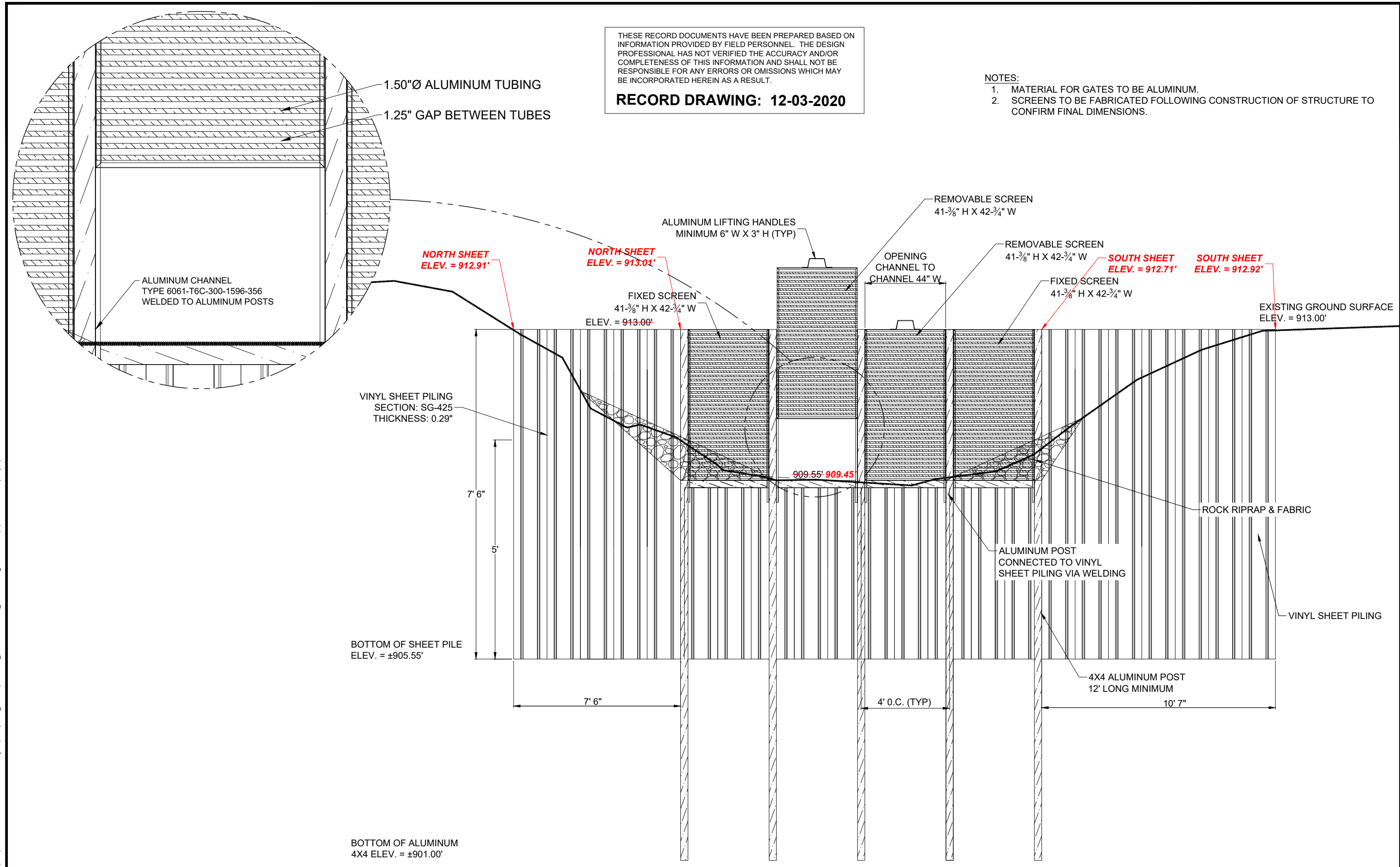


H:\Maple Grove\RCWD\BNA\5555-0288 RWJD1 Fish Barrier Project\CAD\Plans - record\5555-288 - Cover - RECORD.dwg 12/03/2020 4:40 PM (ferrom)

THESE RECORD DOCUMENTS HAVE BEEN PREPARED BASED ON INFORMATION PROVIDED BY FIELD PERSONNEL. THE DESIGN PROFESSIONAL HAS NOT VERIFIED THE ACCURACY AND/OR COMPLETENESS OF THIS INFORMATION AND SHALL NOT BE RESPONSIBLE FOR ANY ERRORS OR OMISSIONS WHICH MAY BE INCORPORATED HEREIN AS A RESULT.

RECORD DRAWING: 12-03-2020

- NOTES:
1. MATERIAL FOR GATES TO BE ALUMINUM.
 2. SCREENS TO BE FABRICATED FOLLOWING CONSTRUCTION OF STRUCTURE TO CONFIRM FINAL DIMENSIONS.



H:\Maple Grove\RCWD\BNS\5555-0288 RWJD1 Fish Barrier Project\CAD\Plans_record\5555-288_FishBarrierDetail_RECORD.dwg-4 Details-12/3/2020 4:41 PM (earpin)

No.		Revision		Date	By	I hereby certify that this plan, specification, or report was prepared by me or under my direct supervision and that I am a duly Licensed Professional Engineer under the laws of the State of Minnesota.		<p>HOUSTON ENGINEERING INC.</p>	Maple Grove		Drawn by AMZ	Date 9-25-20	RWJD1 FISH BARRIER PROJECT RICE CREEK WATERSHED DISTRICT WHITE BEAR LAKE		DETAILS	SHEET
						Signature: <i>Lisa D. Odens</i> Printed Name: LISA D. ODENS Date: 9-25-20 License #: 51685			P: 763.493.4522 F: 763.493.5572		Checked by LDO	Scale AS SHOWN	PROJECT NO. 5555-0288			3