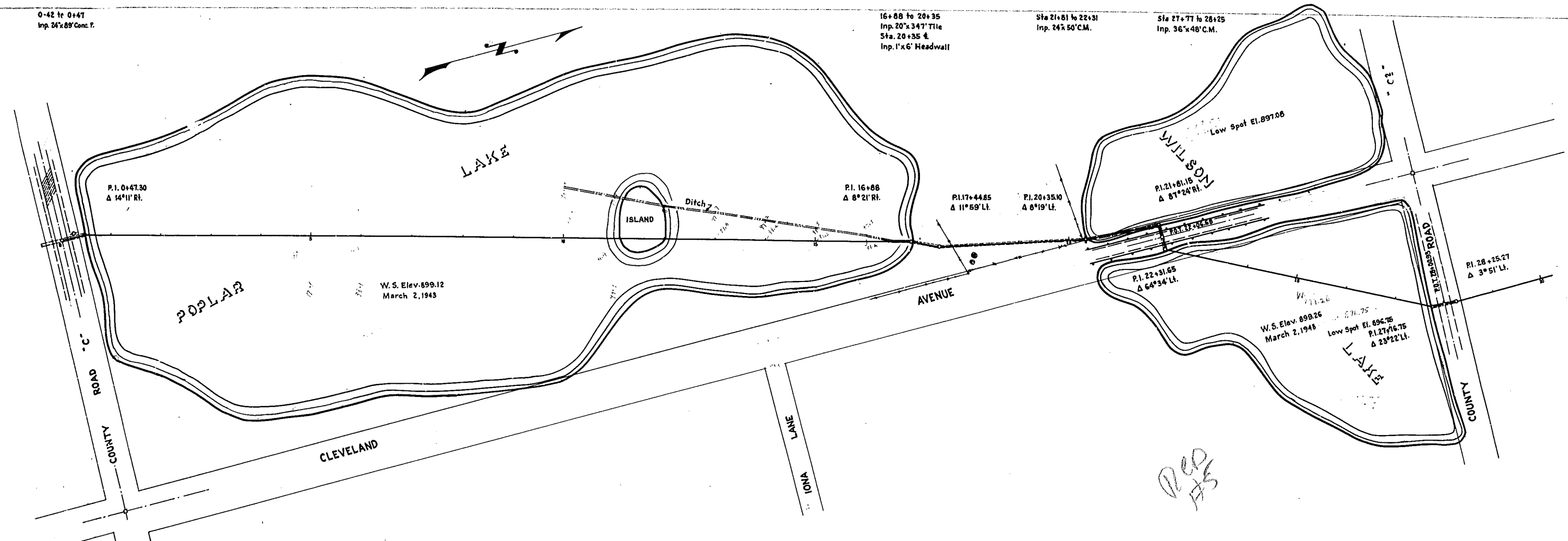


0-42 to 0+47  
Inp. 24'x89' Conc. P.

16+88 to 20+35  
Inp. 20'x347' Title  
Sta. 20+35 ±  
Inp. 1'x6' Headwall

Sta 21+81 to 22+31  
Inp. 24'x50' C.M.

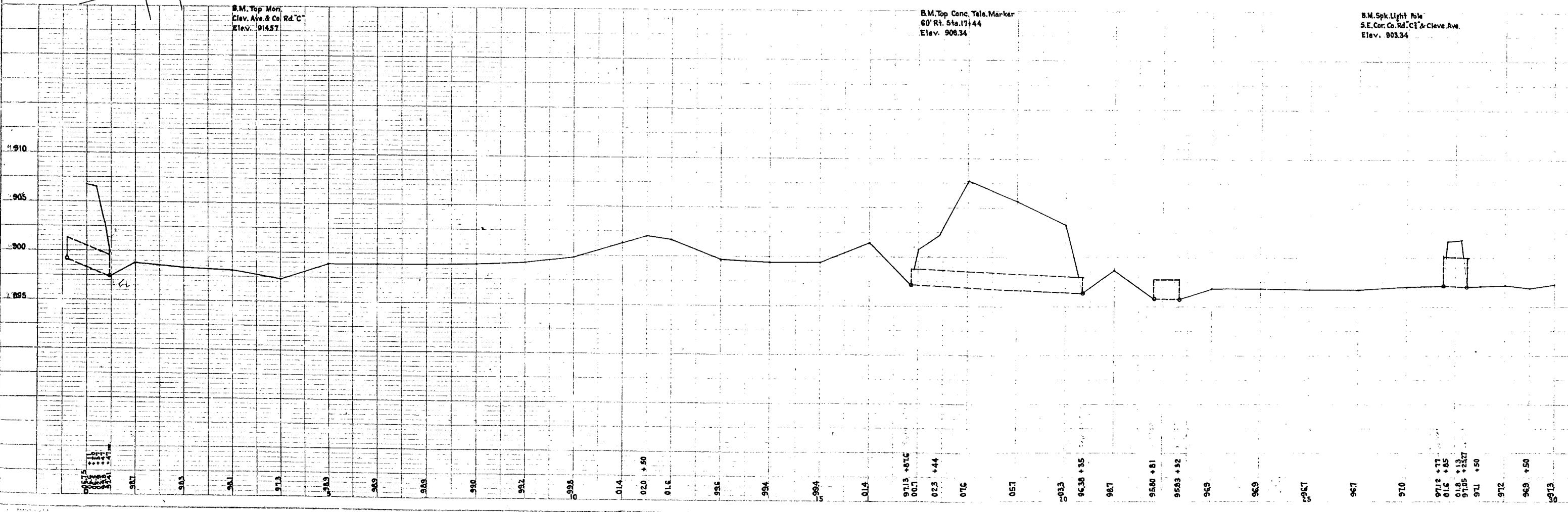
Sta 27+77 to 28+25  
Inp. 36'x48' C.M.

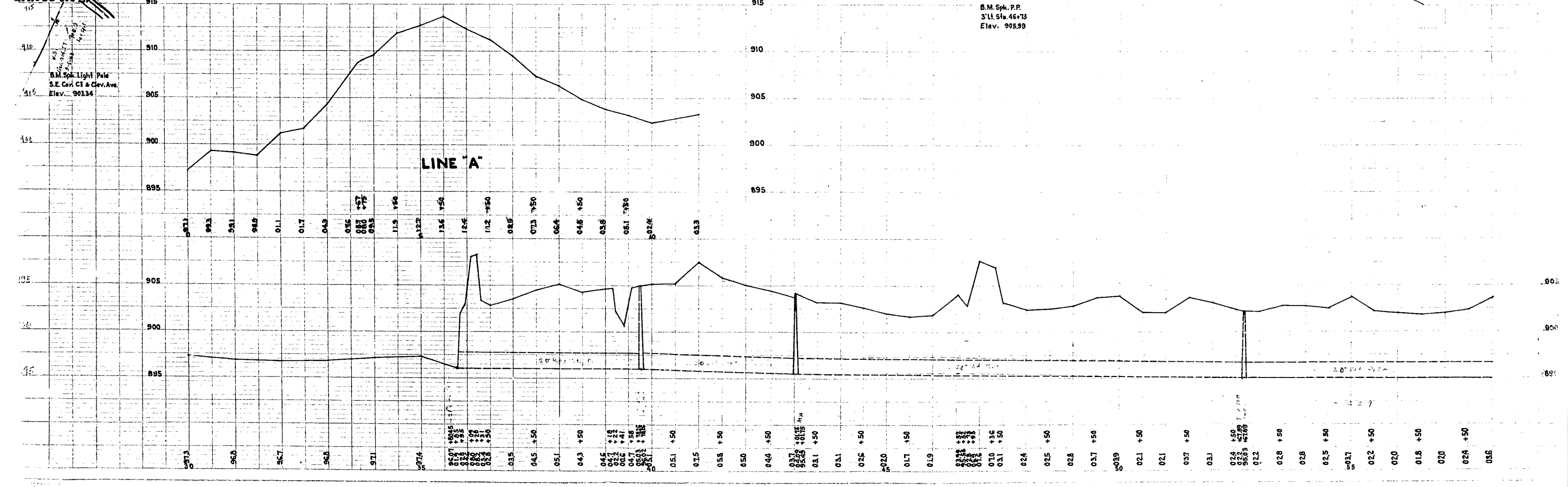
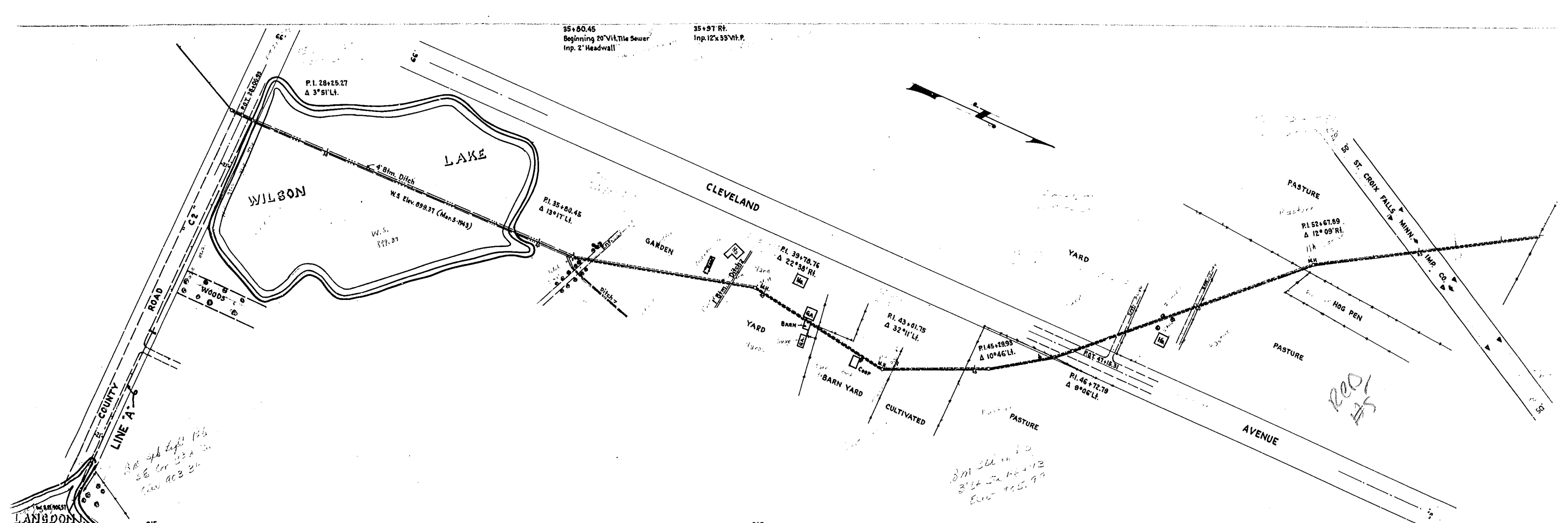


B.M. Top Mon.  
Clev. Ave. & Co. Rd. 'C'  
Elev. 914.57

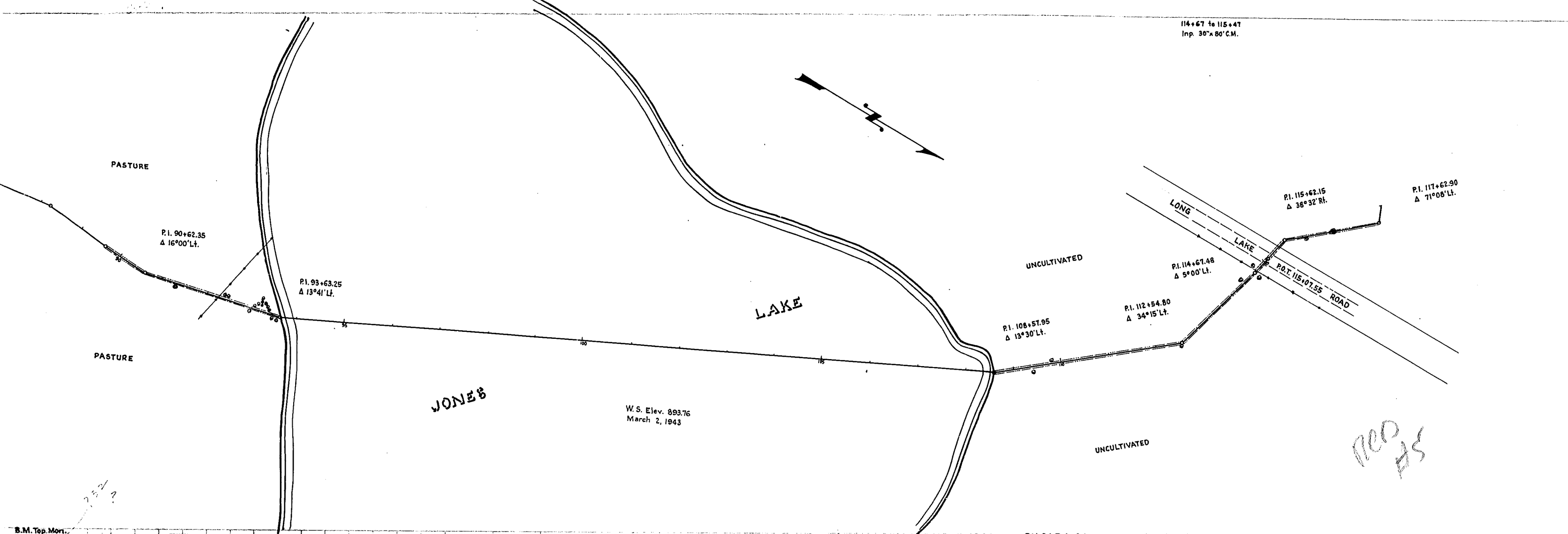
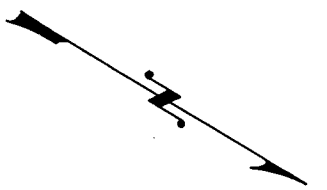
B.M. Top Conc. Tele. Marker  
60' Rt. Sta. 17+44  
Elev. 906.34

B.M. Spk. Light Pole  
S.E. Cor. Co. Rd. 'C' & Clev. Ave.  
Elev. 903.34





114+67 to 115+47  
Inp. 30" x 80" C.M.



B.M. Top. Mon.  
1/2 Sec. 35  
Elev. 900.02

B.M. Spk. Twin Oak  
10' Rt. Sta. 109+30  
Elev. 896.60

