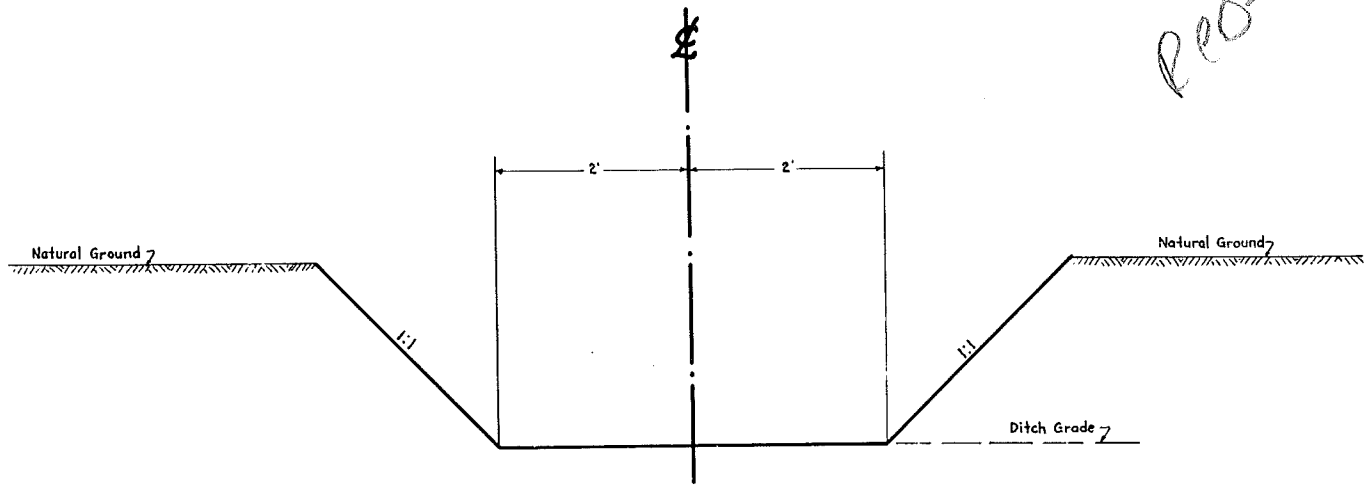


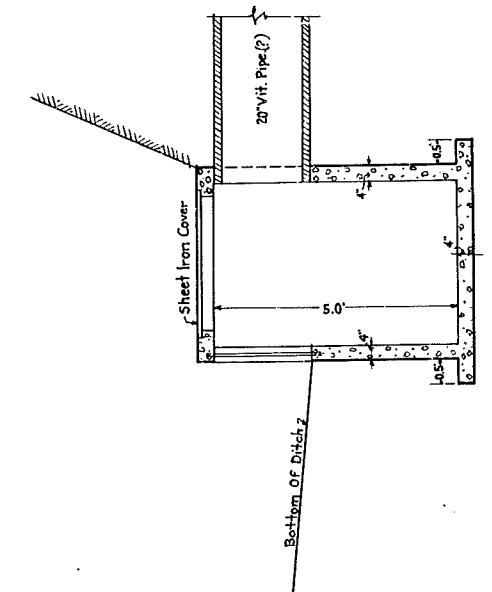
DETAILS

PROFS

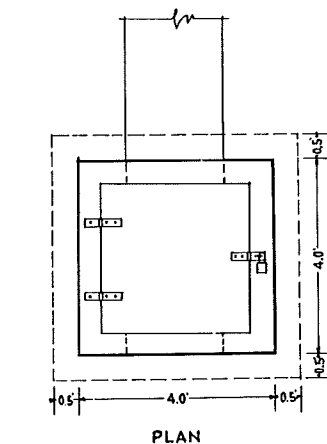


TYPICAL DITCH SECTION

STA. 0+00 TO STA. 0+9+00
STA. 31+74.56 TO STA. 59+00

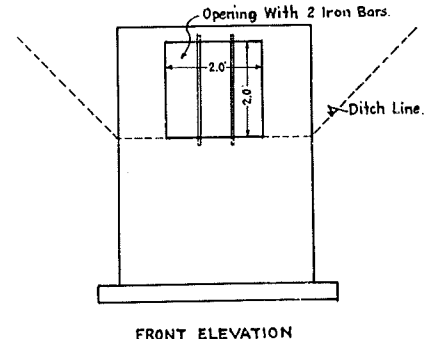


SECTION



DETAILS OF CATCH BASIN

STA. 0+00
Scale 1/2" = 1'-0"

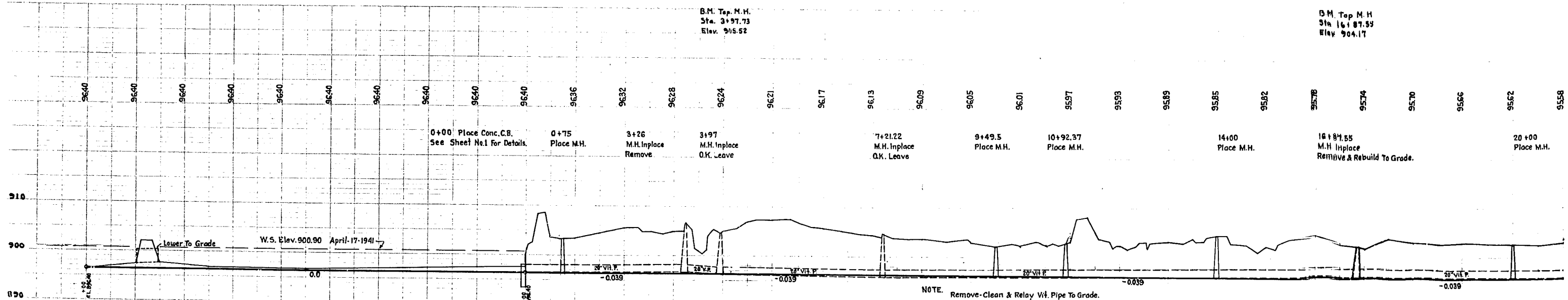
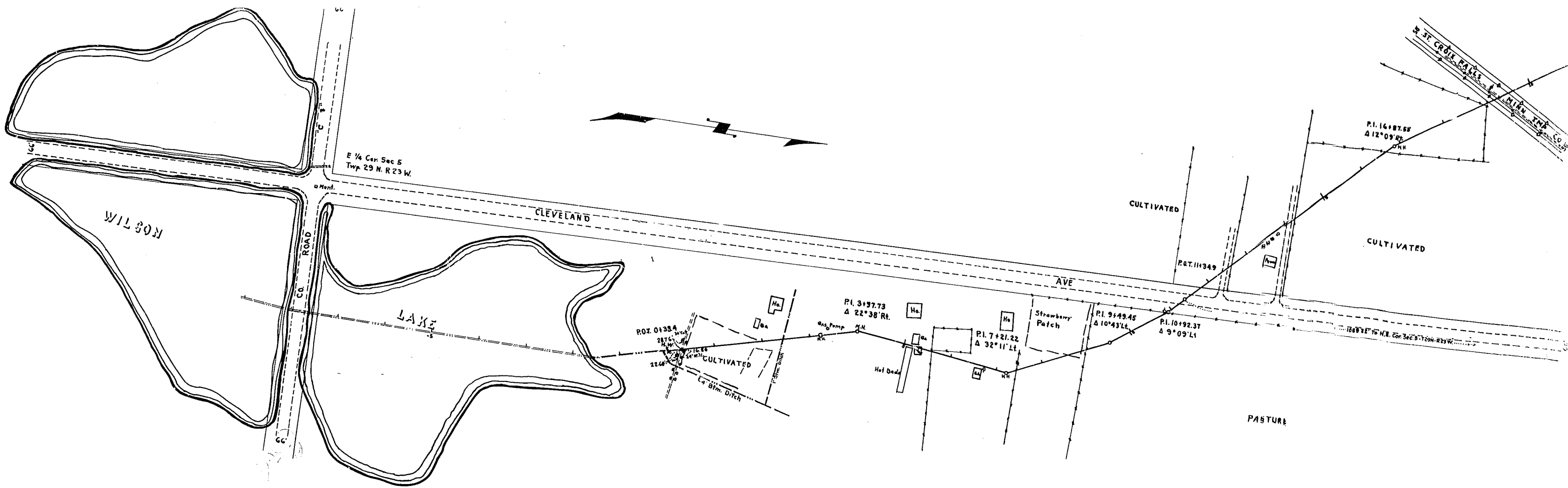


FRONT ELEVATION

OFFICE OF
RAMSEY COUNTY SURVEYOR
HARRY S. BRONSON
DRAINAGE PLAN OF
DITCH NO 5
FROM WILSON LAKE TO JONES LAKE.
MAY 1941 SCALE AS SHOWN.

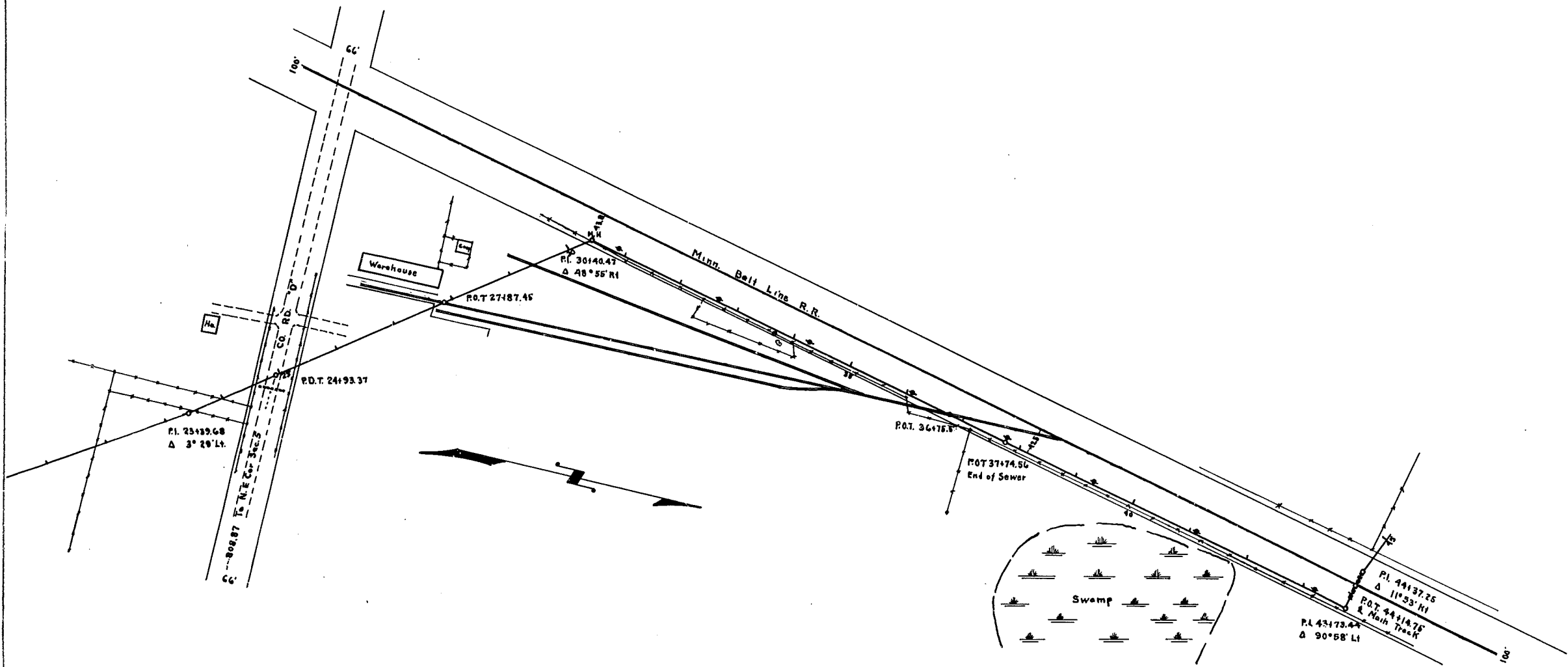
PLANNED BY *A. D. Crawford*
ASSISTANT ENGINEER
PLANS APPROVED 1941 *Harry S. Bronson*
COUNTY SURVEYOR
APPROVED 1941 *John J. McCaughey*
CHAIRMAN COUNTY BOARD

CLASS	ITEM	UNIT	From To	From To	From To	From To	From To	From To	From To	From To	From To	From To	ESTIMATED QUANTITIES
GRADING	1	Clearing	Trees										
	2	Grubbing	Trees										
	3	Clearing	Acres										
	4	Grubbing	Acres										
	5	Excavation (Trench)	Cu. Yds.	15,500									
	6	Backfill	Cu. Yds.	15,500									
	7	Excavation Solid Rock	Cu. Yds.										
	8	Excavation Overhaul	Cu. Yds.										
	9	Excavation Special	Cu. Yds.										
	10	Excavation Hand Ditch	Cu. Yds.	1,500									
	11	Install 12" C.M.	Lin. Ft.										
	12	Install 15" C.M.	Lin. Ft.										
	13	Install 18" C.M.	Lin. Ft.										
	14	Install 24" C.M.	Lin. Ft.										
	15	Install	Lin. Ft.										
	16	Install	Lin. Ft.										
	17	Install 18" Ps	Lin. Ft.										
	18	Install 24" Ps	Lin. Ft.										
	19	Install 30" Ps	Lin. Ft.										
	20	Install 36" Ps	Lin. Ft.										
	21	Install	Lin. Ft.										
	22	Install	Lin. Ft.										
	23	Remove Old Culvert	Lin. Ft.										
	24	Replace Old Culvert	Lin. Ft.										
	25	Finishing and Seeding	100 Sq. Yds.										
	26	Rubble Gutter	Cu. Yds.										
	27	Headwall Concrete	Cu. Yds.										
	28	Headwall Steel	Lbs.										
29													
30													
31													
32													
C. M. CULVERTS	1	Furnish 12" C.M.	Lin. Ft.										
	2	Furnish 15" C.M.	Lin. Ft.										
	3	Furnish 18" C.M.	Lin. Ft.										
	4	Furnish 24" C.M.	Lin. Ft.										
	5	Furnish	Lin. Ft.										
	6	Furnish	Lin. Ft.										
	7	Furnish 12" C.M. Bond	Each										
	8	Furnish 15" C.M. Bond	Each										
	9												
	10												
P3 CULVERTS	1	Furnish 18" Ps	Lin. Ft.										
	2	Furnish 24" Ps	Lin. Ft.										
	3	Furnish 30" Ps	Lin. Ft.										
	4	Furnish 36" Ps	Lin. Ft.										
5													
6													
GUARD RAIL	1	Guard Rail - Cable	Lin. Ft.										
	2	Guard Rail Anchors	Each										
	3	Dummy Posts	Each										
	4												
SIDEWALKS AND CURBING	1	Concrete Curb - Straight	Lin. Ft.										
	2	Concrete Curb - Radius	Lin. Ft.										
	3	Remove Old Curb	Lin. Ft.										
	4	Remove Old Curb and Gutter	Lin. Ft.										
	5	Remove Old Sidewalk	Sq. Ft.										
	6	Replace Old Sidewalk	Sq. Ft.										
	7	Construct New Sidewalk	Sq. Ft.										
	8	Curb Inlet	Each										
	9	Catch Basin Complete	Each										
	10												
	11												
	12												
SEWER	1	12" Vitrified Sewer Pipe	Lin. Ft.										
	2	15" Vitrified Sewer Pipe	Lin. Ft.										
	3	18" Vitrified Sewer Pipe	Lin. Ft.										
	4	20" Vitrified Sewer Pipe	Lin. Ft.	200									
	5	24" Vitrified Sewer Pipe	Lin. Ft.										
	6	Manhole Complete	Each	9									
	7	Catch Basin Complete	Each	1									
	8	Remove Manhole	Each	2									
9													
10													
SURFACE	1	Loading Gravel	Cu. Yds.										
	2	Hauling Gravel	C. Y. Mi.										
	3	Shaping & Compacting	Cu. Yds.										
	4	Oil	Gal.										
	5	Cut-back	Sq. Yds.										
	6												
7													
8													
STRUCTURES	1	Concrete	Cu. Yds.										
	2	Reinforcing Steel	Lbs.										
	3	Excavation	Cu. Yds.										
	4	Piling	Lin. Ft.										
	5												
	6												
	7												
	8												
	9												
	10												



9640	9640	9640	9640	9640	9640	9640	9640	9640	9640	9636	9632	9628	9624	9621	9617	9613	9609	9605	9601	9597	9593	9589	9585	9582	9578	9574	9570	9566	9562	9558

REDS



RCO#15

