

COUNTY DITCH NO. 5

Jan. 1907

Scale 200 Feet per inch Book 2 page 16

J.H. HANSTRONG SURVEYOR

JONES LAKE

Mark Emery

Hans & Foss

Laura H. Kersten

Daniel Wymann

Geo. H. Schulze

Louisa Schulze

Jennie E. Wymann

Jennie E. Wymann

Henry H. Hinckley

S.W. 1/4 Sec. 33, T.29, R.23
less Transmission Line

E. F. Wilson
N.E. 1/4 less

R.R. & Transmission Line

Henry Schulze
West 40 acres of N.W. 1/4

Augusta Powers
N.E. 1/4 of N.W. 1/4 ex. W. 2 1/2 acres.

Omer Rosenkranz
S.W. 1/4 of N.W. 1/4

Augusta Powers
S.E. 1/4 of N.W. 1/4

Caroline Gluck
S.E. 1/4 less R.R. & Transmission Line

Herman Kohlman
N. 1/2 of S.W. 1/4 ex. R.R. &
ex. part to De Wolf

J. H. Schaecht
E. 1/2 of S.W. 1/4 less R.R.

AUDITORS

SUB. NO. 26.

185 acres
Branch No. 1

0.8 acres

8 1/2 acres

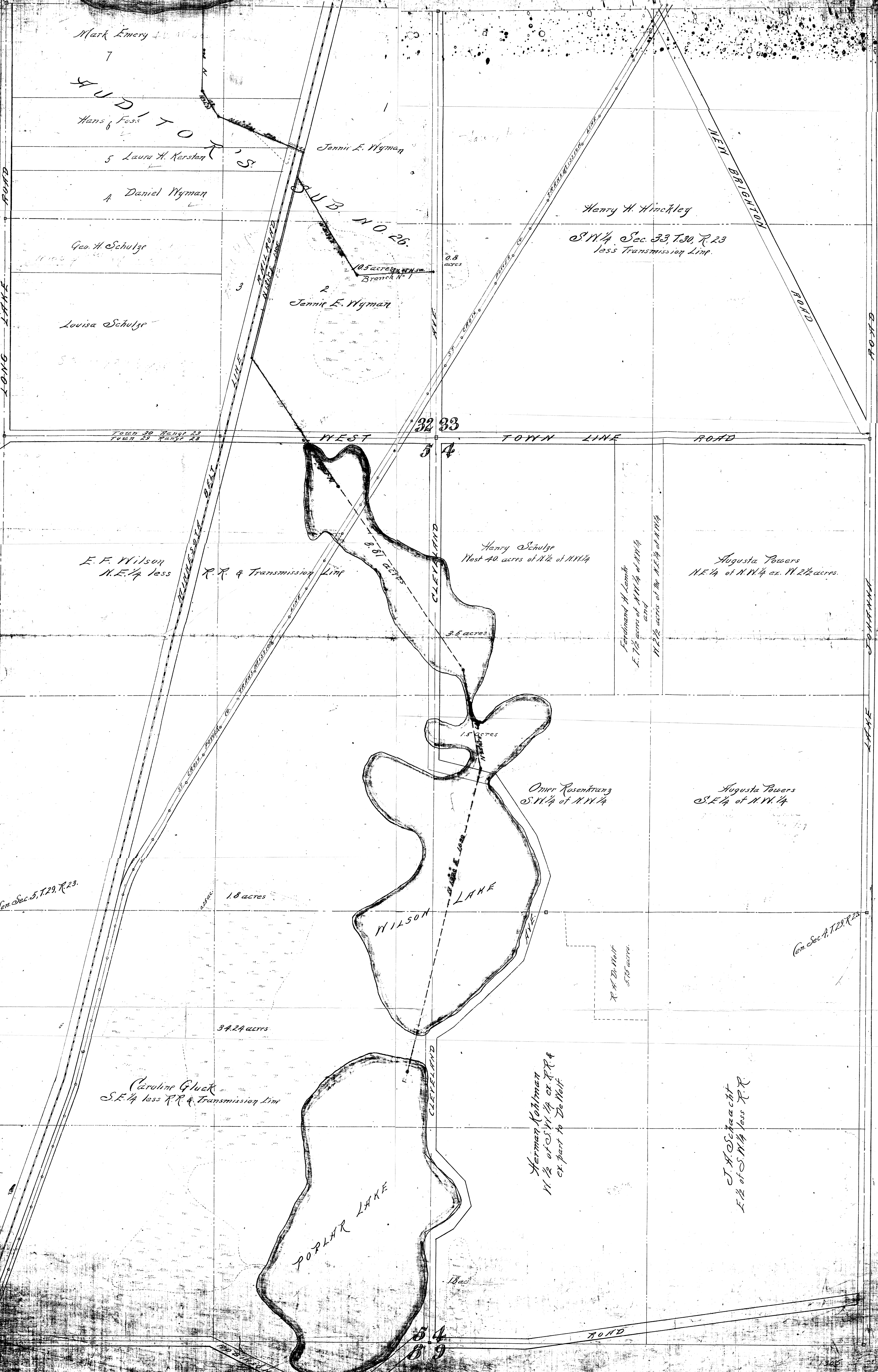
3.5 acres

1.5 acres

1.8 acres

34.24 acres

13 acres



10, 106

Gen. Sec. 4, T.29, R.23

Gen. Sec. 5, T.29, R.23