

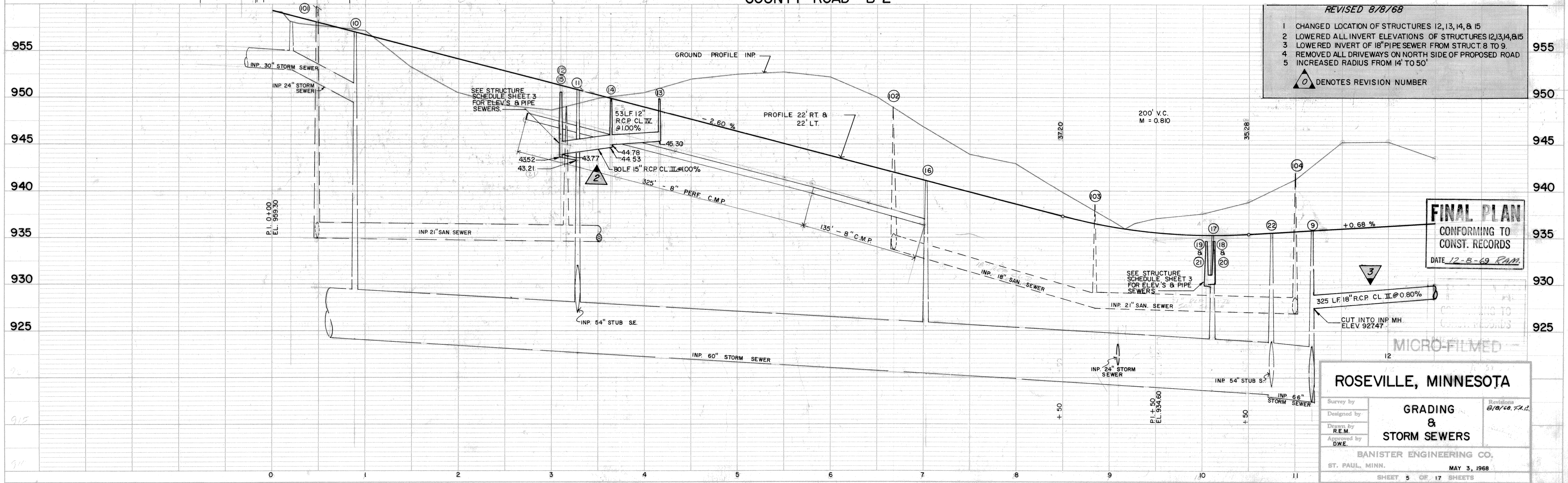
C DEV. P.I. 1+81.81
 Δ 44°50'13" LT.
 D 13°00'
 T 181.81'
 L 344.90'
 R 440.70'
 C DEV. P.C. 0+00
 C DEV. P.T. 3+44.90

C DEV. P.I. 6+15.64
 Δ 44°50'13" RT.
 D 13°00'
 T 181.81'
 L 344.90'
 R 440.70'
 C DEV. P.C. 4+33.83
 C DEV. P.T. 7+78.73

CITY PROJ. NO. 67-39
 YEARS OF CONSTRUCTION: 1968 & 1969
 CONTRACTOR: DUNKLEY SURFACING CO., INC.
 CITY ENGINEER: SHERMAN L. GOLDBERG



SCALE: 1" = 50' HORIZ.
 1" = 5' VERT.



- REVISED 8/8/68
- 1 CHANGED LOCATION OF STRUCTURES 12, 13, 14, & 15
 - 2 LOWERED ALL INVERT ELEVATIONS OF STRUCTURES 12, 13, 14, 8, 15
 - 3 LOWERED INVERT OF 18" PIPE SEWER FROM STRUCT. 8 TO 9
 - 4 REMOVED ALL DRIVEWAYS ON NORTH SIDE OF PROPOSED ROAD
 - 5 INCREASED RADIUS FROM 14' TO 50'
- Δ DENOTES REVISION NUMBER

FINAL PLAN
 CONFORMING TO
 CONST. RECORDS
 DATE 12-8-69 RAM

MICRO-FILMED
 12

ROSEVILLE, MINNESOTA

Survey by	GRADING & STORM SEWERS	Revised
Designed by		8/8/68 R.A.L.
Drawn by		
Approved by		

BANISTER ENGINEERING CO.
 ST. PAUL, MINN. MAY 3, 1968

SHEET 5 OF 17 SHEETS