

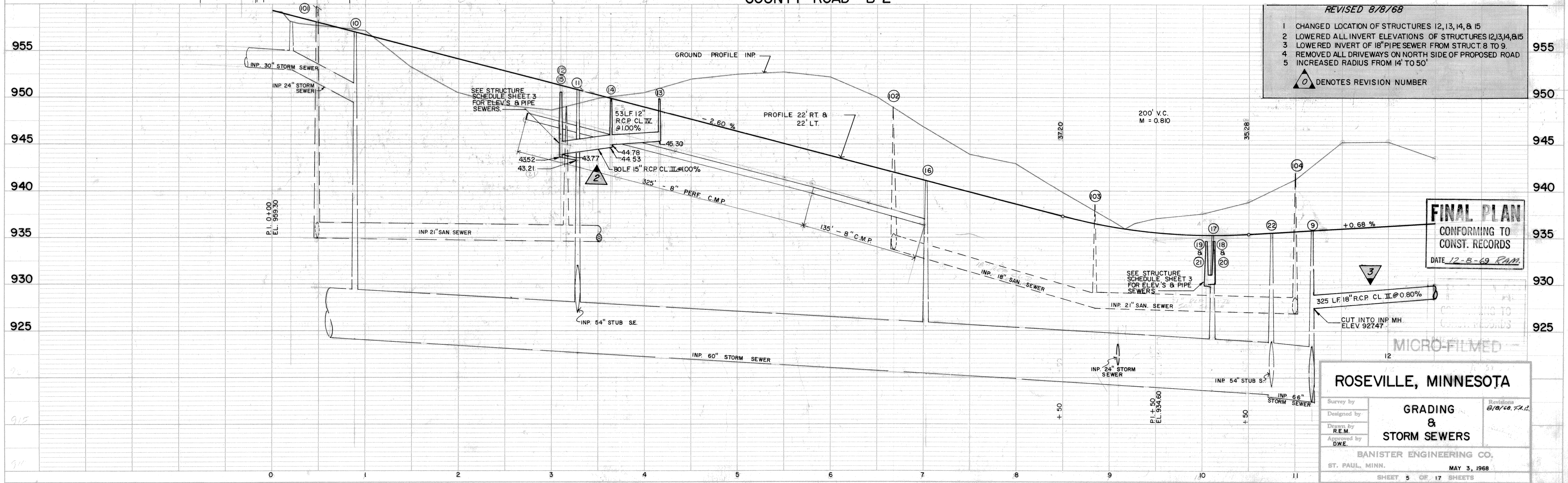
C DEV. P.I. 1+81.81
 Δ 44°50'13" LT.
 D 13°00'
 T 181.81'
 L 344.90'
 R 440.70'
 C DEV. P.C. 0+00
 C DEV. P.T. 3+44.90

C DEV. P.I. 6+15.64
 Δ 44°50'13" RT.
 D 13°00'
 T 181.81'
 L 344.90'
 R 440.70'
 C DEV. P.C. 4+33.83
 C DEV. P.T. 7+78.73

CITY PROJ. NO. 67-39
 YEARS OF CONSTRUCTION: 1968 & 1969
 CONTRACTOR: DUNKLEY SURFACING CO., INC.
 CITY ENGINEER: SHERMAN L. GOLDBERG



SCALE: 1" = 50' HORIZ.
 1" = 5' VERT.



- REVISED 8/8/68
- 1 CHANGED LOCATION OF STRUCTURES 12, 13, 14, & 15
 - 2 LOWERED ALL INVERT ELEVATIONS OF STRUCTURES 12, 13, 14, 15
 - 3 LOWERED INVERT OF 18" PIPE SEWER FROM STRUCT. 8 TO 9
 - 4 REMOVED ALL DRIVEWAYS ON NORTH SIDE OF PROPOSED ROAD
 - 5 INCREASED RADIUS FROM 14' TO 50'
- 0 DENOTES REVISION NUMBER

FINAL PLAN
 CONFORMING TO
 CONST. RECORDS
 DATE 12-8-69 RAM

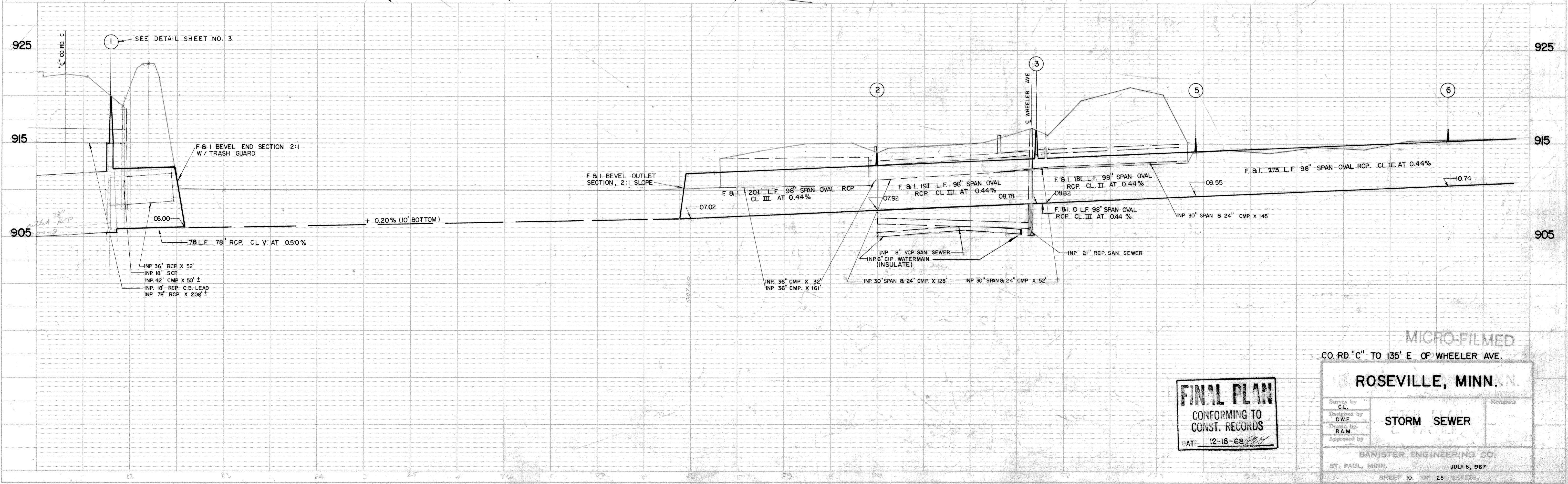
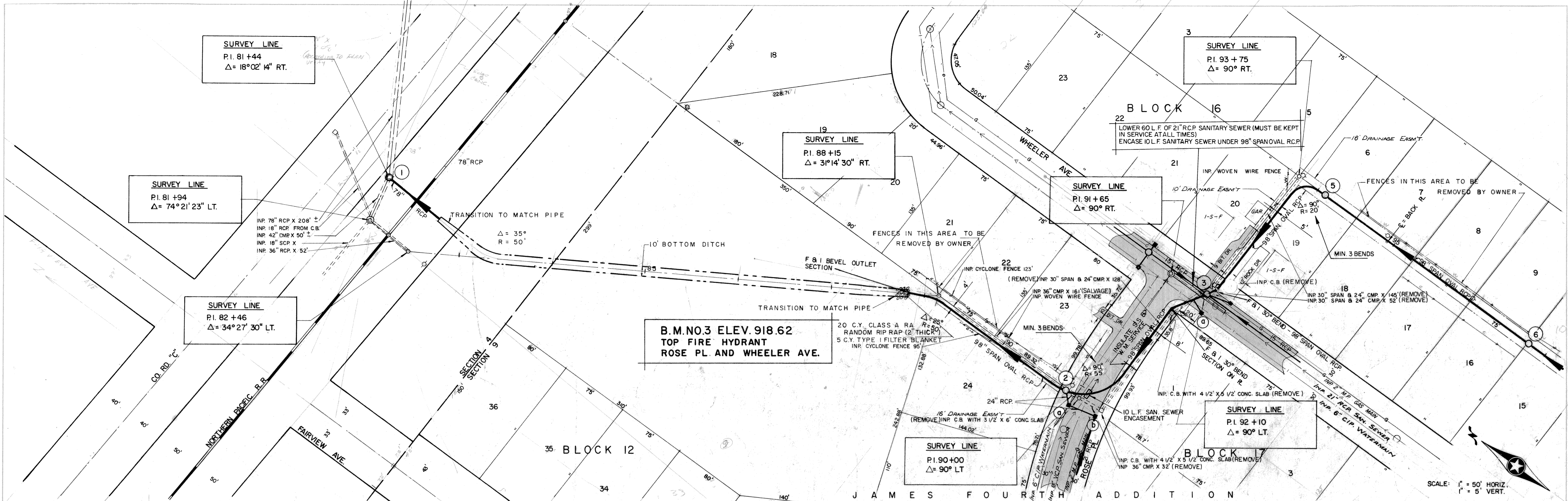
ROSEVILLE, MINNESOTA

Survey by
 Designed by
 Drawn by R.E.M.
 Approved by D.W.E.

**GRADING
&
STORM SEWERS**

BANISTER ENGINEERING CO.
 ST. PAUL, MINN. MAY 3, 1968

SHEET 5 OF 17 SHEETS



FINAL PLAN
CONFORMING TO
CONST. RECORDS
DATE: 12-18-68

MICRO-FILMED
CO. RD. "C" TO 135' E. OF WHEELER AVE.

ROSEVILLE, MINN.

Survey by C.L.	Revisions
Designed by D.W.E.	STORM SEWER
Drawn by R.A.M.	
Approved by	

BANISTER ENGINEERING CO.
ST. PAUL, MINN. JULY 6, 1967
SHEET 10. OF 25 SHEETS