

PROFILE
 SURVEYED
 PLOTTED
 GRADES CHECKED
 NO. _____
 STRUCTURE NOTATIONS CHECKED

PLAN
 SURVEYED
 PLOTTED
 ALIGNED CHECKED
 NO. _____
 M. OF WAY CHECKED

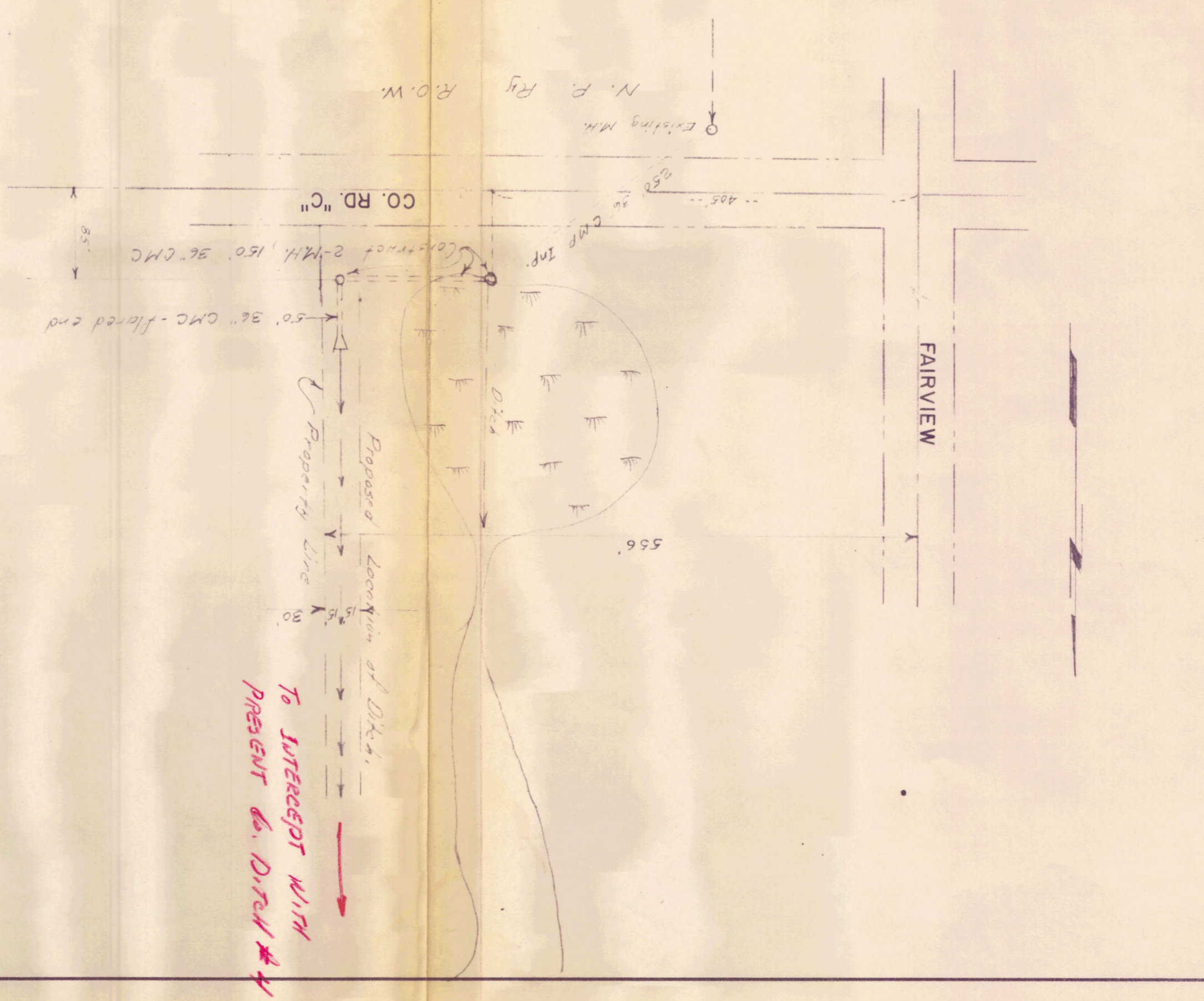
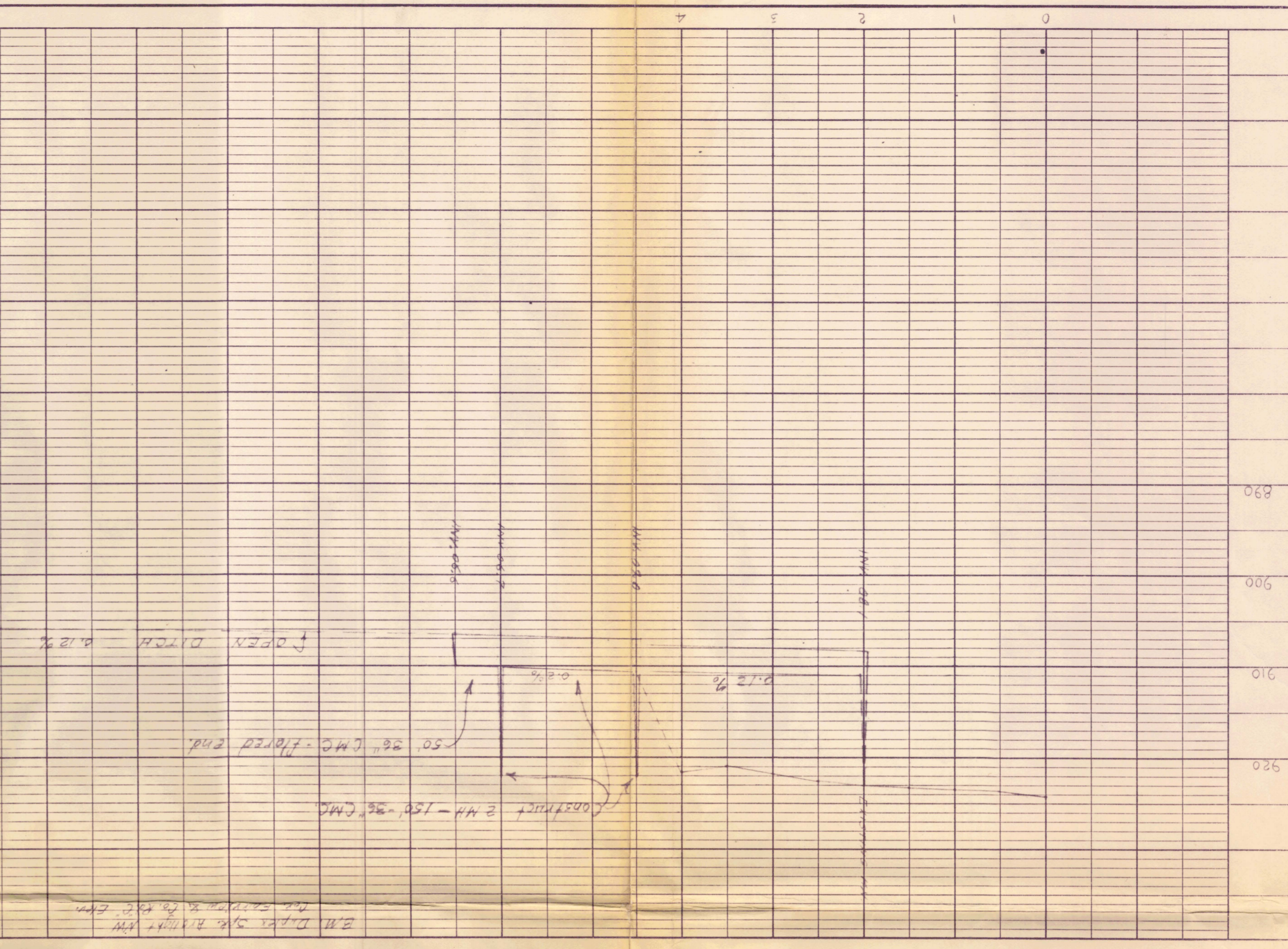
DATE _____

BY _____

DATE _____

PLATE 1: PLAN PROFILE O. R. R. & R. E. STANDARD
 KEUFEL & ESSER CO., NEW YORK
 K & E CO., NO. 347-R MAKESS 1931, MADE IN U.S.A. 2433

ROSEVILLE MINN.	
PROPOSED	
REVISION-COUNTY DITCH NO. 4	
MILNER W. CARLEY & ASSOCIATES CONSULTING ENGINEERS	
18 Fourth Ave. S.E. St. Cloud, Minn.	
500 W. Hwy. 96 St. Paul 13, Minn.	
SURVEY BY	
DESIGNED BY	
DRAWN BY	
APPROVED BY	
I hereby certify that this plan specification or report was prepared by me or under my direct supervision and that I am a duly registered Professional Engineer under the laws of the State of Minnesota.	
Date	May 15, 1934
Req. No.	3527
COMM. NO.	61-112
SHEET 1 OF 1 SHEETS	



Handwritten notes in the bottom left corner, including '1324' and other illegible scribbles.