

RAMSEY COUNTY BOARD
OF
COMMISSIONERS

THOMAS R. BYRNE, CHAIRMAN

JOHN E. DAUBNEY

MRS. DONALD M. DECOURCY

ARTHUR T. GIBBONS

GEORGE A. HARDENBERGH

ROY P. NADEAU

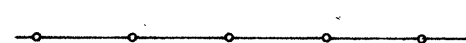
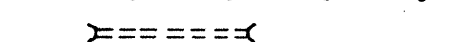
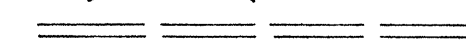
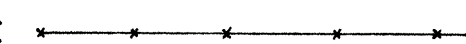

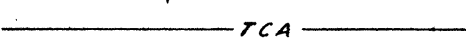
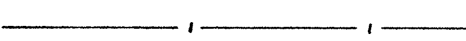

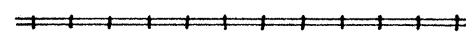
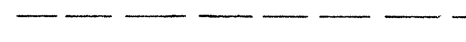
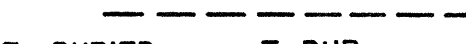
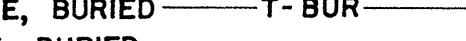
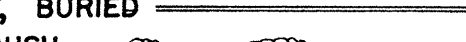

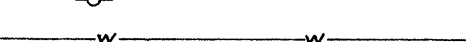



ED SALVERDA

RAMSEY COUNTY, MINNESOTA

CONSTRUCTION PLANS
FOR

IMPROVEMENT OF COUNTY DITCH NO. 3

LEGEND

CHAIN LINK FENCE	
CULVERTS INP.	
EXISTING DITCH	
FENCE, MISC. TYPE	
FIRE HYDRANT	
FORCE MAIN	
GAS	
MANHOLE	
RAILROAD	
SANITARY SEWER	
STORM SEWER	
TELEPHONE CABLE, BURIED	
TELEPHONE DUCT, BURIED	
TREE, SHURB, BRUSH	
UTILITY POLE	
WATER	
WATER GATE VALVE	
RIP-RAP	

INDEX

SHEET NO.	DESCRIPTION
1	TITLE SHEET
2	LOCATION SHEET
3	QUANTITY SHEET
4	DETAIL SHEET
5-8	PLAN & PROFILE

SPECIFICATIONS

THE "STANDARD SPECIFICATIONS FOR HIGHWAY CONSTRUCTION" DATED JANUARY 1, 1964 AND AMENDED FEBRUARY 1, 1966, SHALL GOVERN EXCEPT AS MODIFIED BY "SPECIFICATIONS FOR IMPROVEMENT OF COUNTY DITCH NO. 3, RAMSEY COUNTY, MINNESOTA."

I HEREBY CERTIFY THAT THIS PLAN WAS PREPARED BY ME OR UNDER MY DIRECT SUPERVISION AND THAT I AM A DULY REGISTERED PROFESSIONAL ENGINEER UNDER THE LAWS OF THE STATE OF MINNESOTA.

Milner W. Carley REG. NO. 3527 DATE *June 29, 1967*
VILLAGE ENGINEER

RECOMMENDED FOR APPROVAL
Thomas R. Byrne REG. NO. 2031 DATE *July 11, 67*
RAMSEY COUNTY ENGINEER

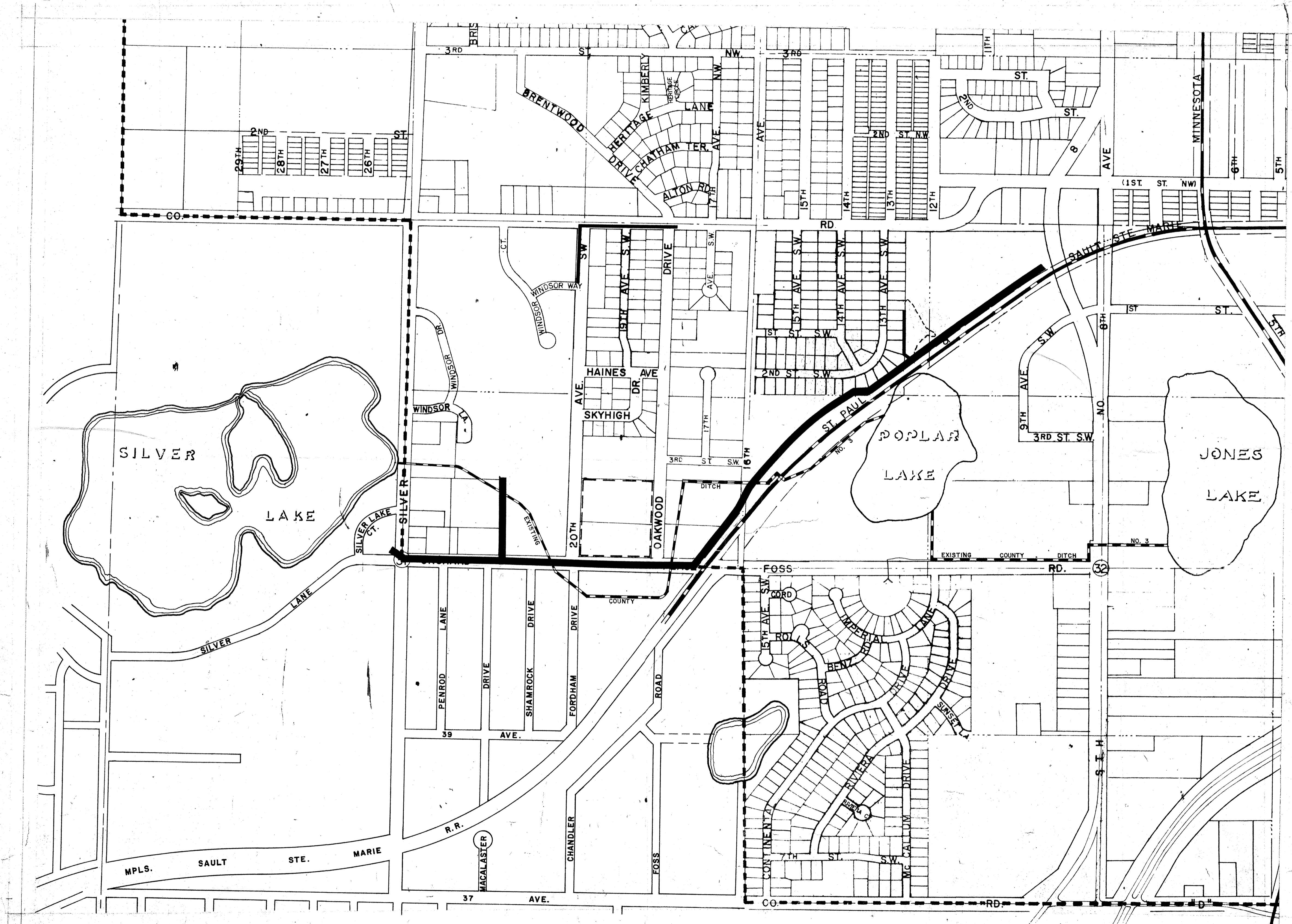
APPROVED _____, 19 _____

CHAIRMAN COUNTY BOARD DATE *7-20-67*

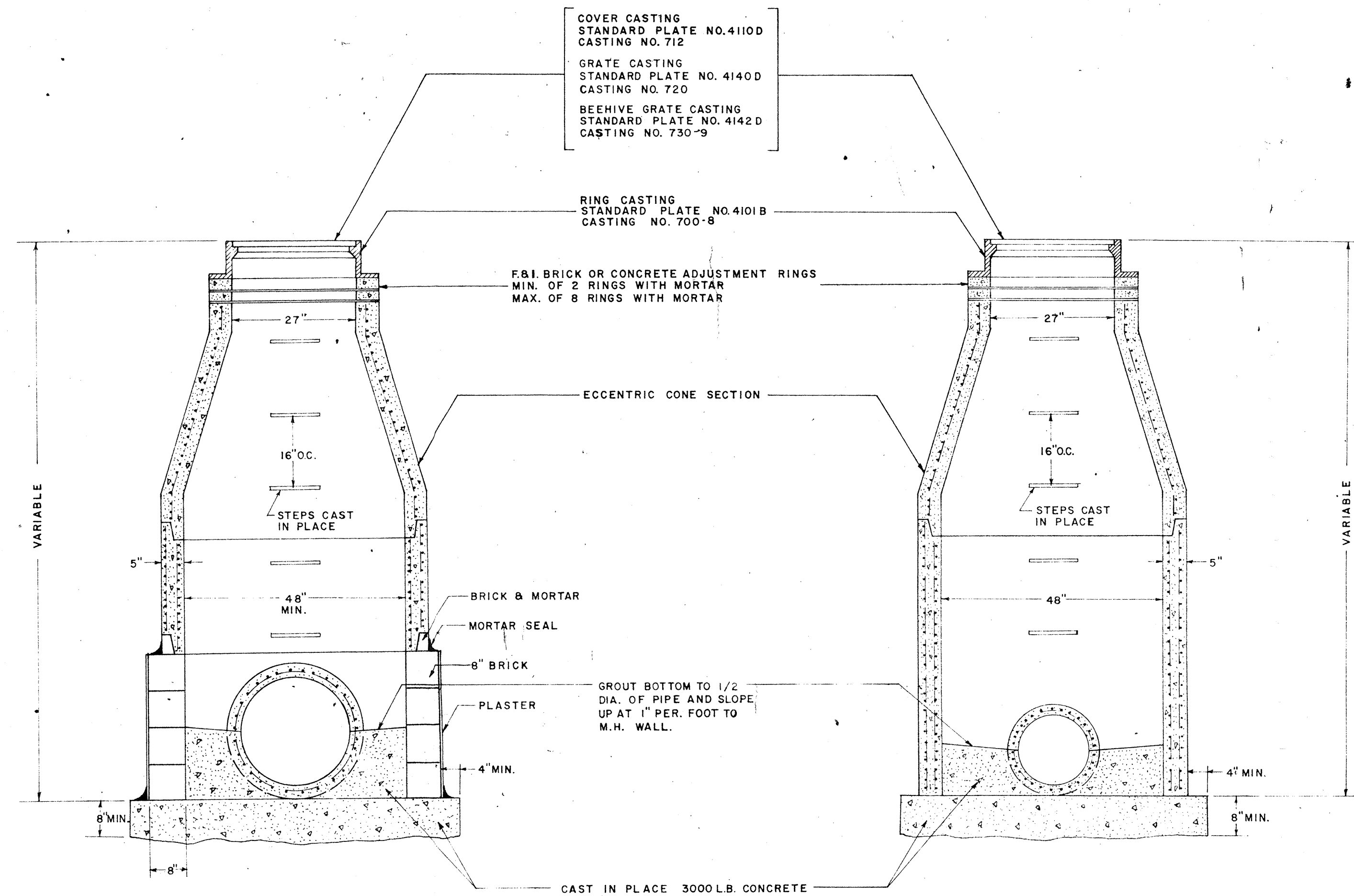
COUNTY AUDITOR DATE *8-1-67*

TITLE SHEET	
MILNER W. CARLEY & ASSOCIATES CONSULTING CIVIL ENGINEERS LAND SURVEYORS <small>500 W. HWY. 96 ST. PAUL 12, MINN. 484-3301 314 OAK ST. SAUK CENTRE, MINN. 352-3664 18 4TH AVE. S.E. ST. CLOUD, MINN. 251-7751</small>	
DESIGNED BY	I hereby certify that this plan, specification, or report was prepared by me or under my direct supervision and that I am a duly Registered Professional Engineer under the laws of the State of Minnesota.
DRAWN BY	
APPROVED BY	REVISIONS
SHEET 1 OF 8 SHEETS	Date _____ Reg. No. _____ COMM. NO. _____

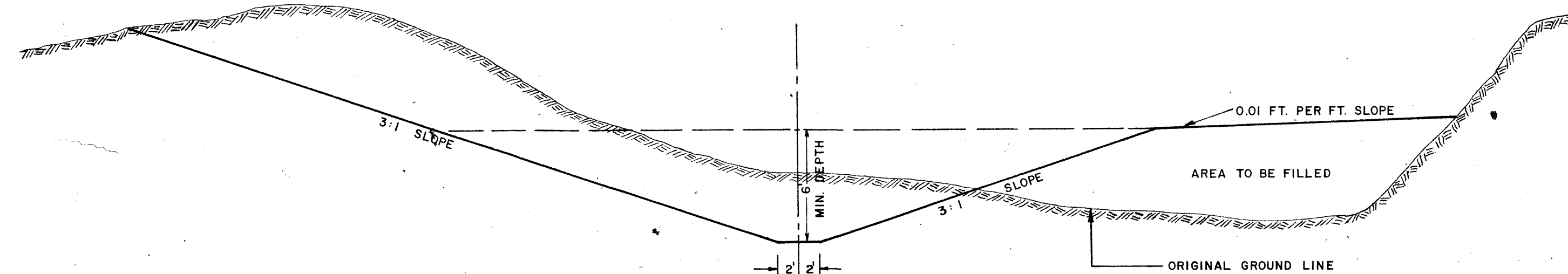
RCO-3



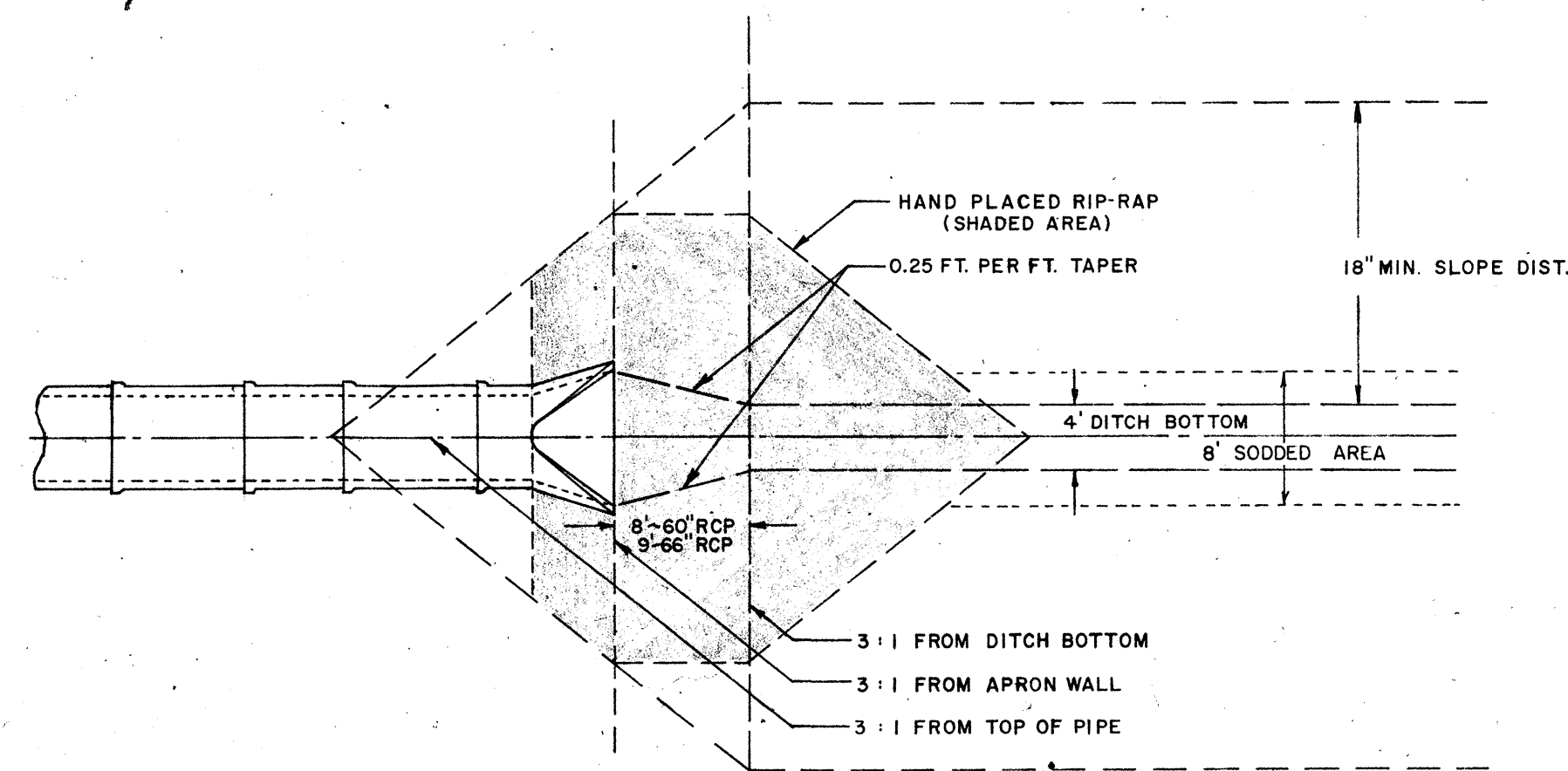
LOCATION SHEET



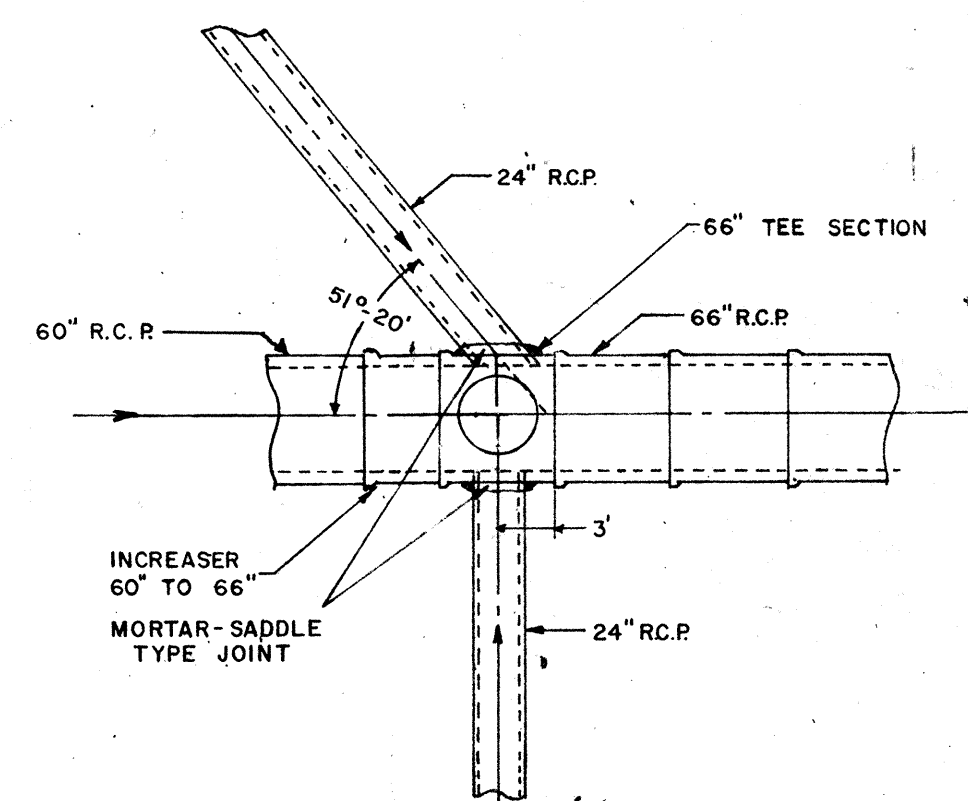
STANDARD MANHOLE DETAIL



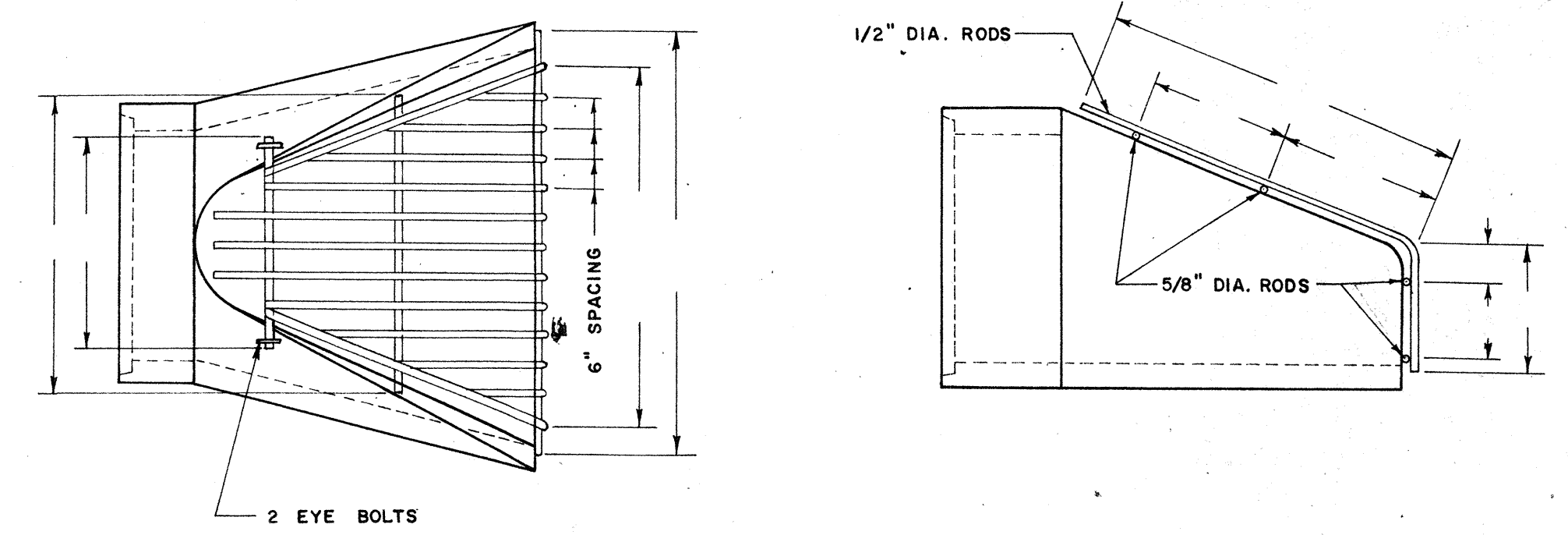
TYPICAL DITCH SECTION (VOID)



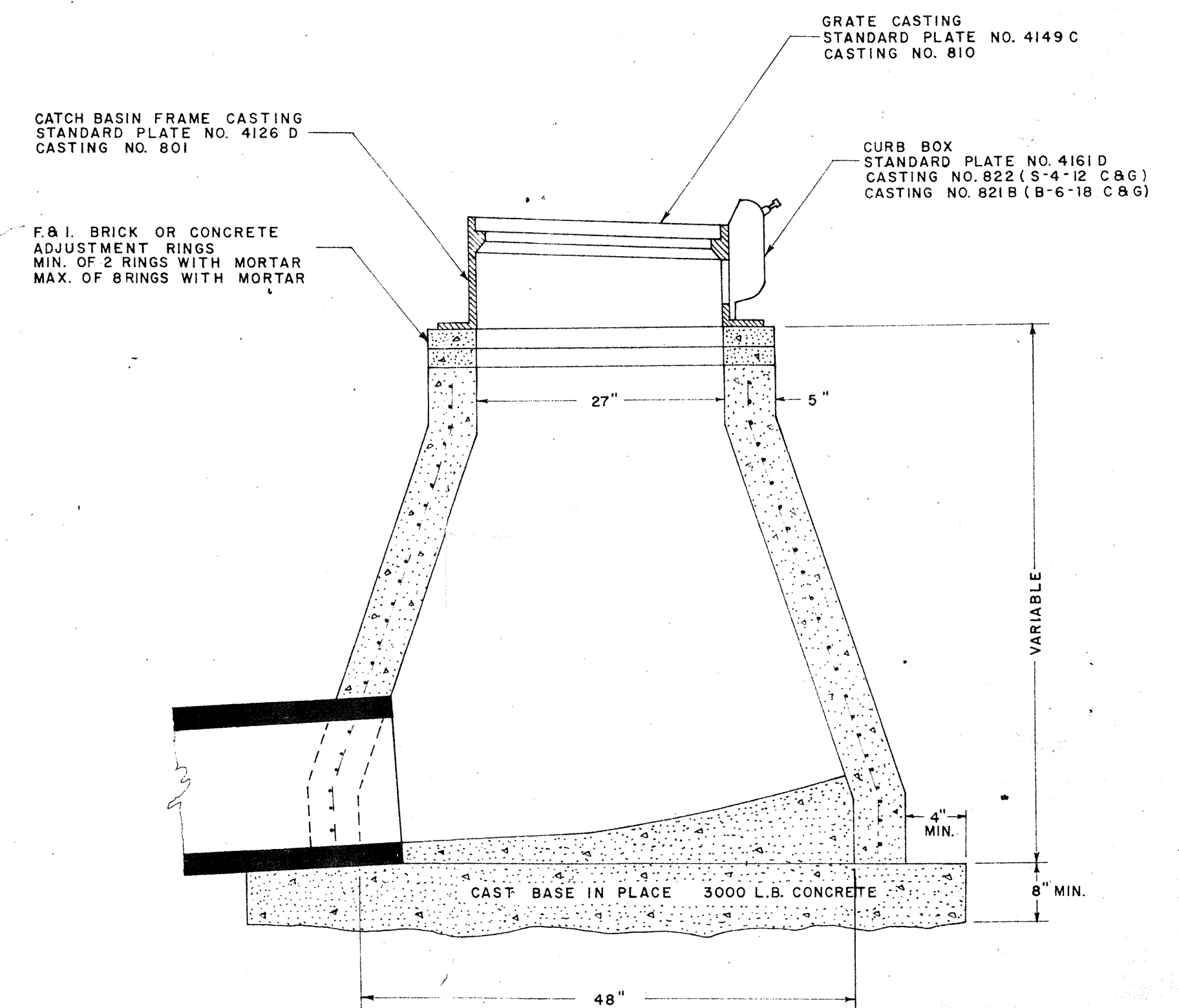
FLARED END SECTION DETAIL (VOID)



DETAIL-24" CONN. TO 66" R.C.P. TEE



TRASH GUARD
CRETEX OR EQUAL



STANDARD CATCH BASIN

STORM SEWER DETAIL SHEET

MILNER W. CARLEY & ASSOCIATES

CONSULTING CIVIL ENGINEERS LAND SURVEYORS

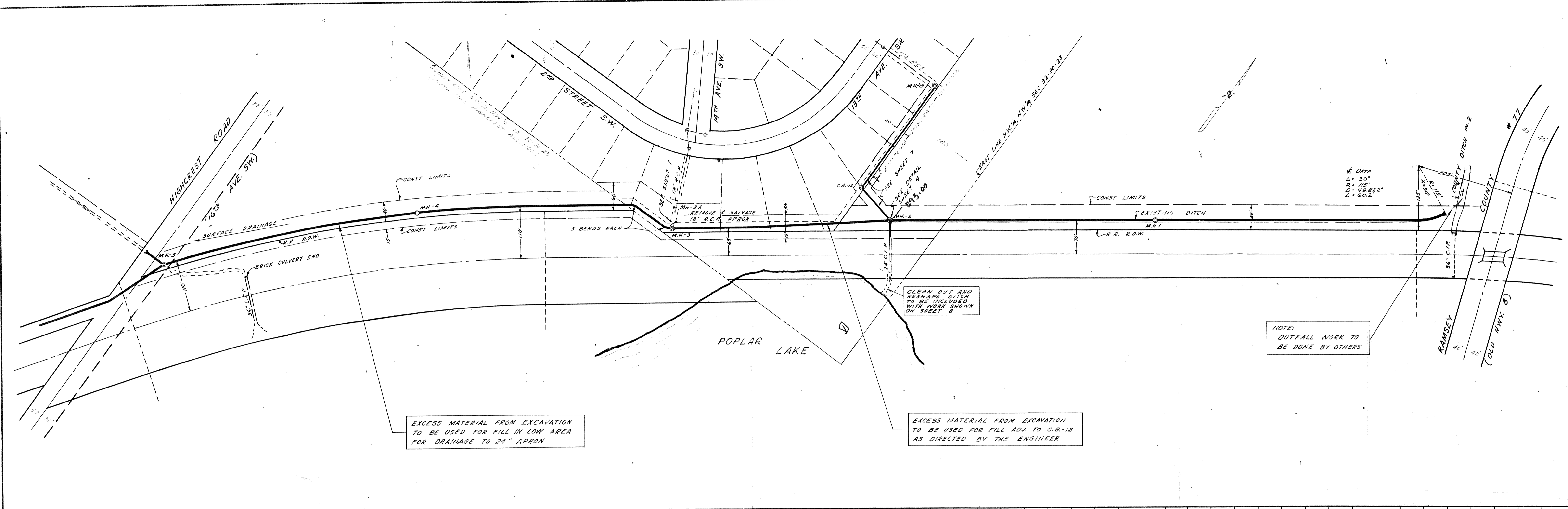
500 W. HWY. 96
ST. PAUL 12, MINN.
484-3301

314 OAK ST.
SAUK CENTRE, MINN.
852-3664

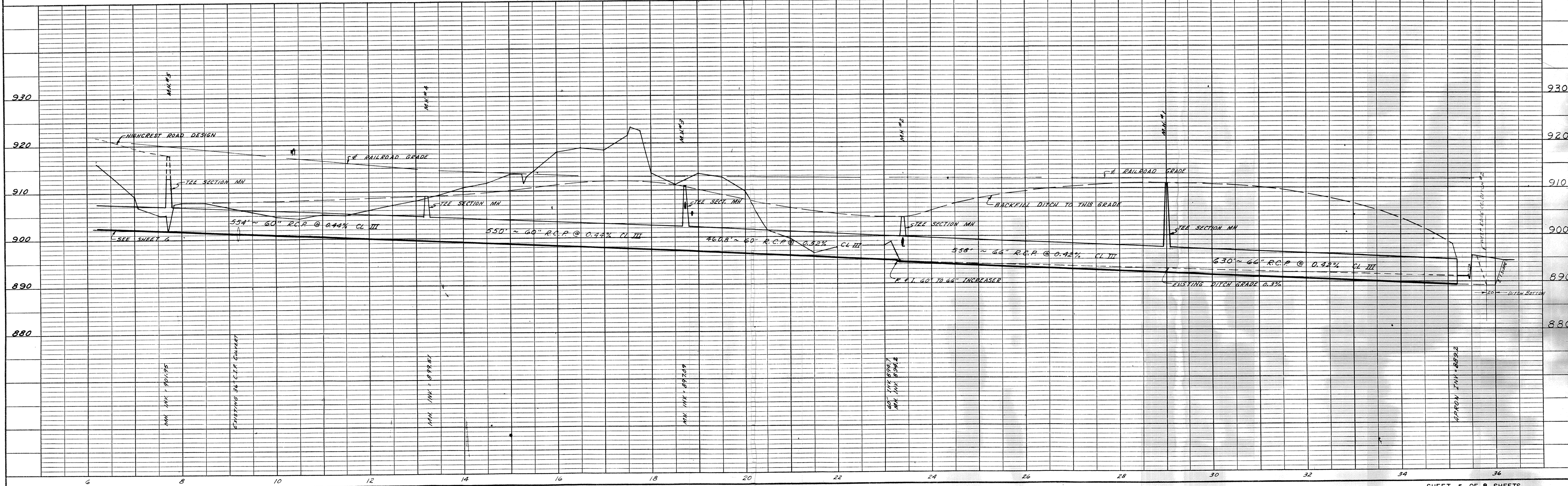
18 4TH AVE. S.E.
ST. CLOUD, MINN.
251-7751

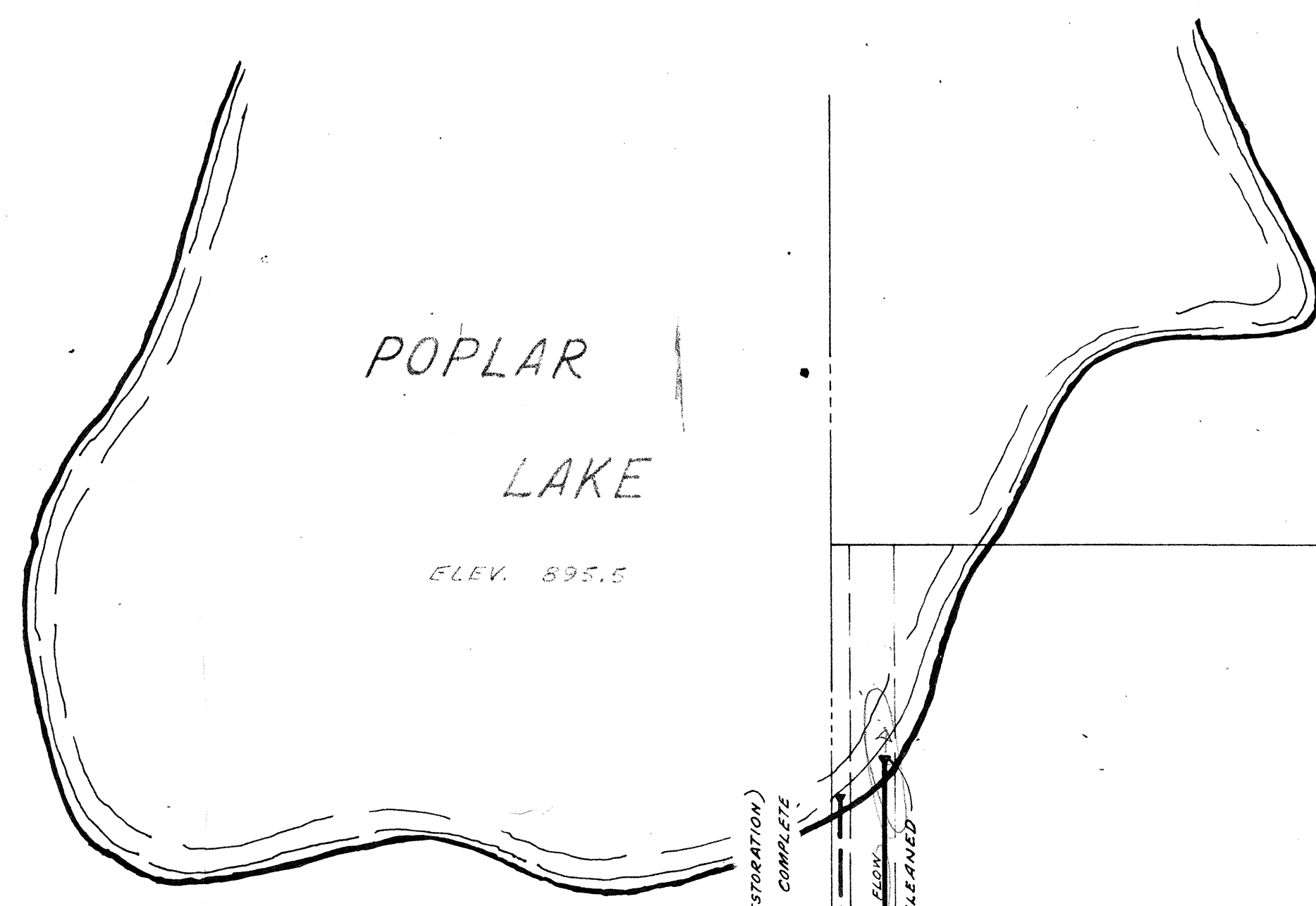
SURVEY BY	I hereby certify that this plan, specification, or report was prepared by me or under my direct supervision and that I am a duly Registered Professional Engineer under the laws of the State of Minnesota.	REVISIONS
DESIGNED BY		
DRAWN BY		
APPROVED BY		
SHEET 4 OF 8 SHEETS	Date	Reg. No.
		COMM. NO.

PLAN
 SURVEYED BY: [blank]
 DATE: [blank]
 NOTE BOOK ALIGNED CHECKED: [blank]
 RT. OF WAY CHECKED: [blank]
 NO. [blank]

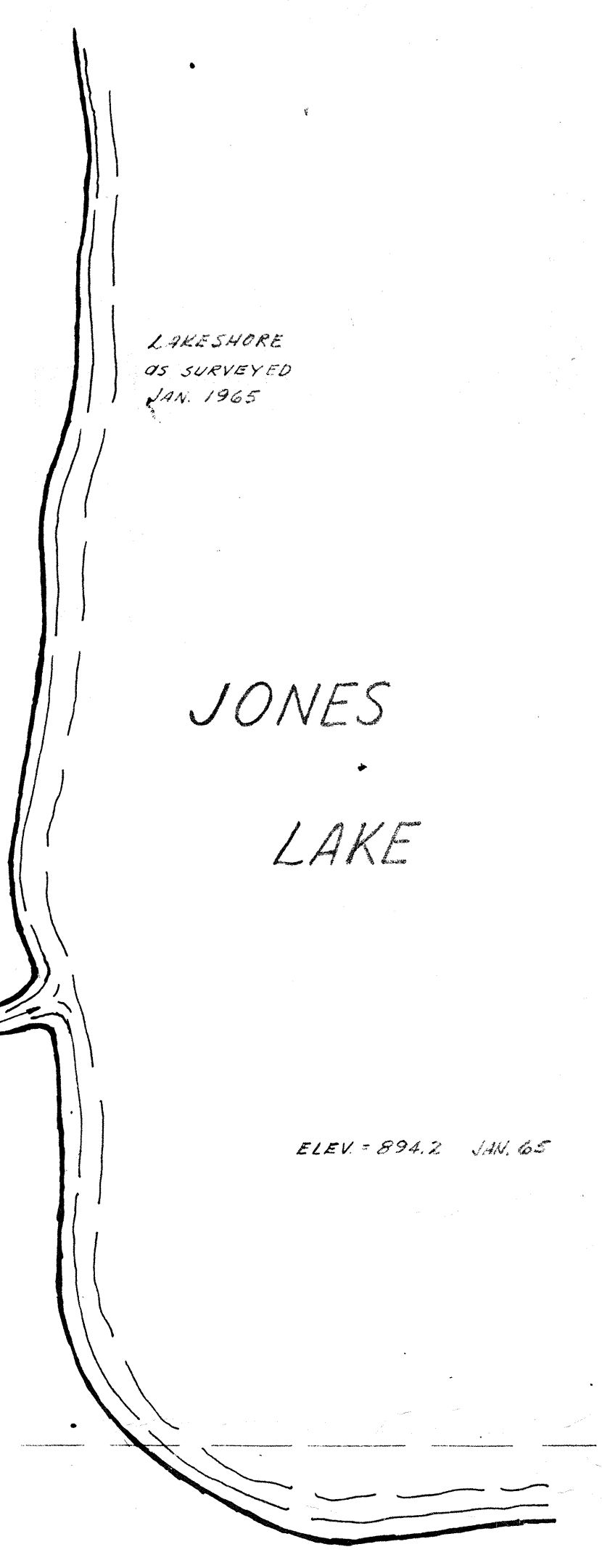


PROFILE
 SURVEYED BY: [blank]
 DATE: [blank]
 NOTE BOOK PLOTTED CHECKED: [blank]
 B. M.'S NOTED: [blank]
 NO. 22-21 STRUCTURE NOTATIONS CH.F.A.D.



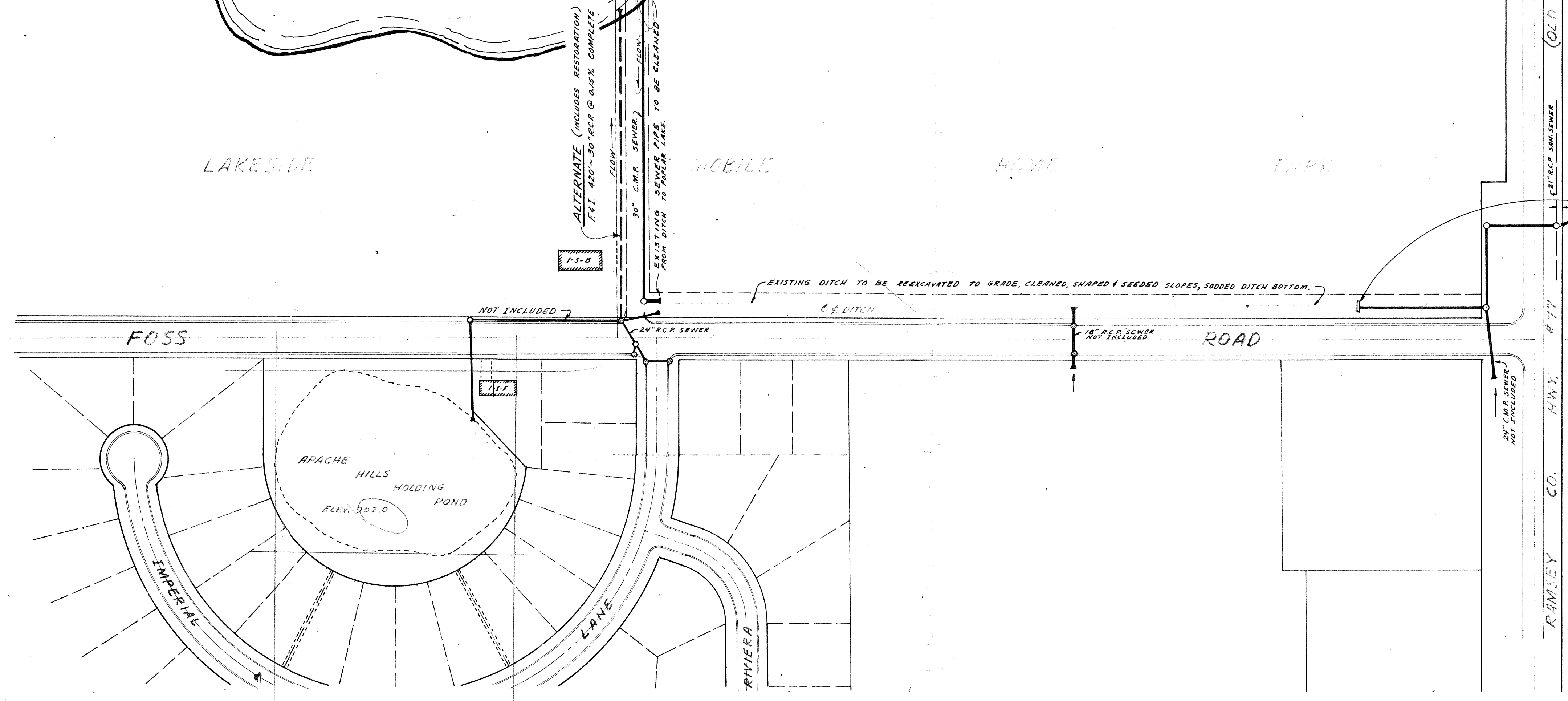


WILLMUS INDUSTRIAL PARK

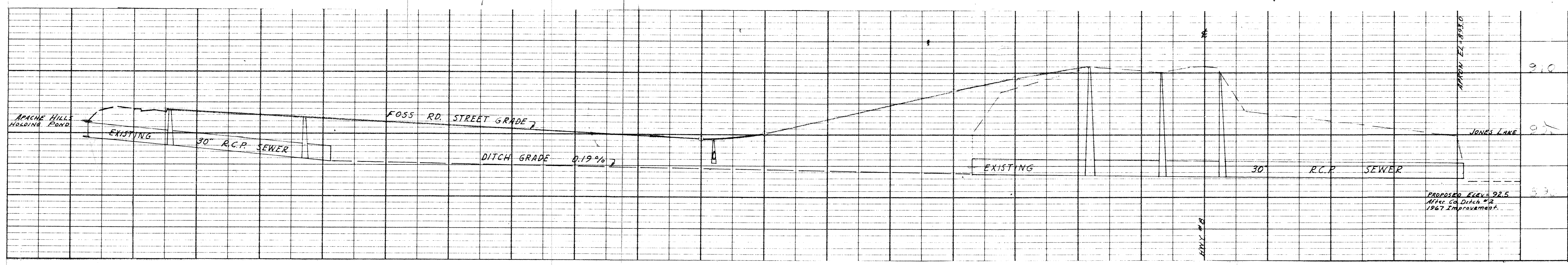
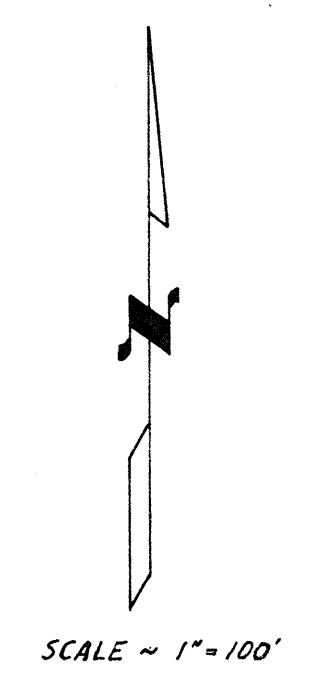


LAKESHORE
AS SURVEYED
JAN. 1965

ELEV. 894.2 JAN. 65



EXISTING DITCH TO BE REEUCAVATED TO GRADE, CLEANED, SHAPED & SEEDED SLOPES, SODDED DITCH BOTTOM.



RAMSEY COUNTY DITCH #3		
MILNER W. CARLEY & ASSOCIATES CONSULTING ENGINEERS		
500 W. Hwy. 96 St. Paul 12, Minn.	I hereby certify that this plan, specification, or report was prepared by me or under my direct supervision and that I am a duly registered Professional Engineer under the laws of the State of Minnesota.	18 Fourth Ave. S.E. St. Cloud, Minn.
DESIGNED BY	REVISIONS	COMM. NO.
DRAWN BY <i>K.R. Ostlund</i>		
APPROVED BY		
SHEET 8 OF 8 SHEETS	Date	Reg. No.

8159