

# DITCH #3 NEAR FOSS ROAD

Scale 1/8" = 10'

E174.00

3+08

PI 3+55.7  
Δ 187.10 LL

PI 6+03.1  
Δ 24.3' LL

E1 10.73

E1 10.96

E1 10.58

E1 10.78

PI 9+55.4  
Δ 20.53 LL

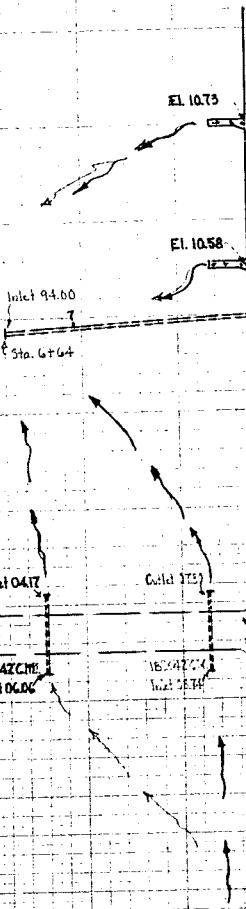
Outlet 9306

Outlet 9301

Outlet 9304

Station 9+33

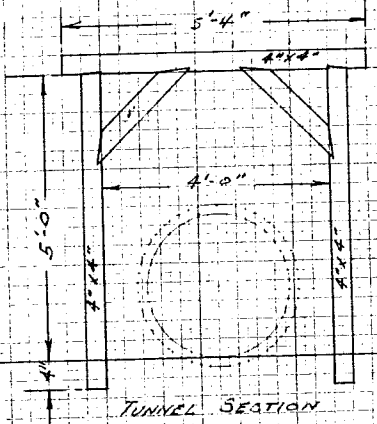
Note: Pipe filled with silt to 13" depth



JONES LAKE  
(Orig)

FOSS ROAD

CTR SEC 2



**LUMBER:**  
 25 Pcs. 4" x 4" x 16'-0" #2 FIR - ROWEN  
 18 " 4" x 4" x 8'-0" #2 FIR " "  
 300 " 2" x 8" x 8'-0" #2 FIR - 3/4" S.  
 TOTAL 3813 B.F.  
 EST COST LUMBER - 150.00

**EXAVATION:**  
 TUNNEL EX. 110 cu yds @ 5.00 \$550.00  
 OPEN DITCH EX. 1022 cu yds @ 10.55 \$10771.10  
 REMOVE, CLEAN & REPLACE 400 LB 20' CM @ 7.00 \$2800.00

TUNNEL SECTION

