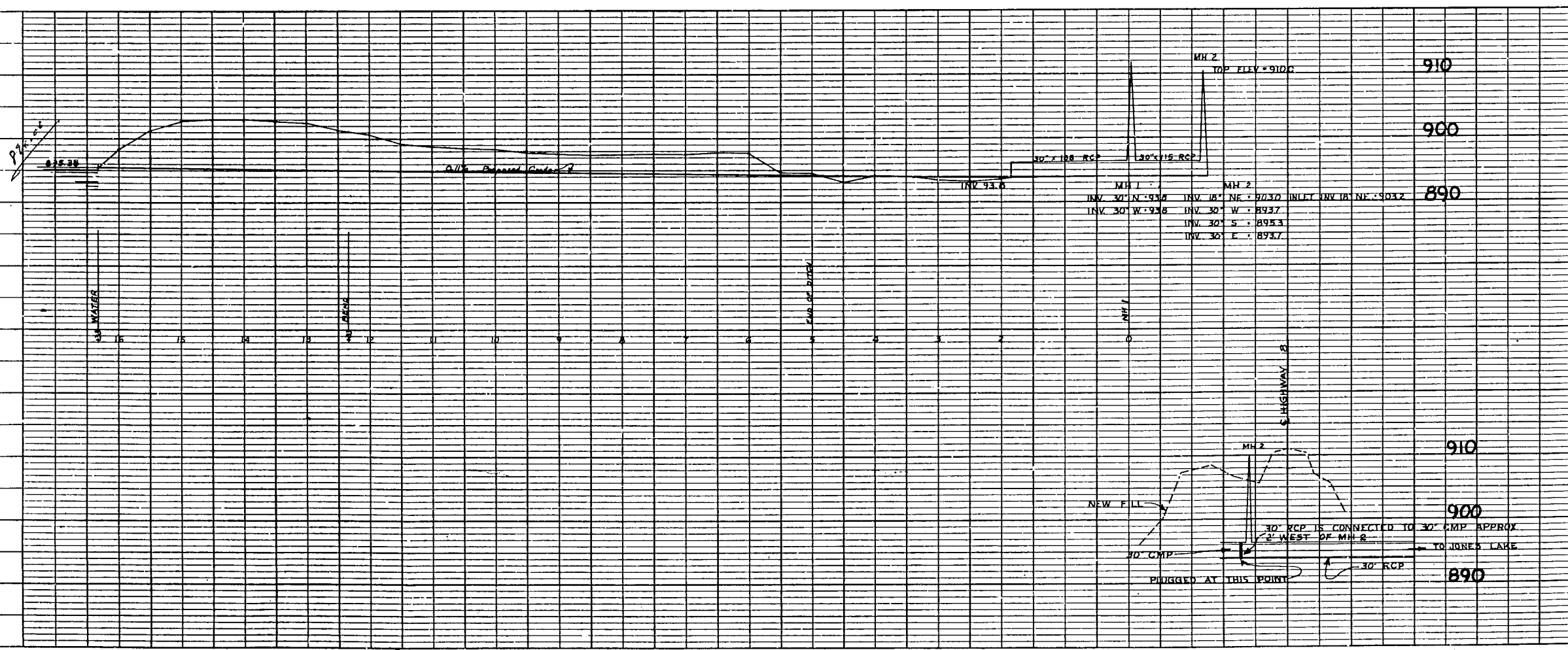


NOTE:
Contours from 1944 map.



B.M.	SEK.	FP.	W. OF	HWY. 8,	N. SIDE	FOSS RD.	ELEV. 8910

SCALE:
1"=100' HORIZ.
1"=10' VERT.

RAMSEY COUNTY, MINN.
COUNTY DITCH NO. 3 REVISION

MILNER W. CARLEY & ASSOCIATES
CONSULTING ENGINEERS

400 W. Hennepin Ave.
St. Paul 18, Minn.

18 Fourth Ave. S.E.
St. Cloud, Minn.

SURVEY BY: <i>TC</i>	I hereby certify that this plan, specification or report was prepared by me or under my direct supervision and that I am a duly registered Professional Engineer under the laws of the State of Minnesota.	REVISIONS
DESIGNED BY: <i>TC</i>		
DRAWN BY: <i>R.F.M.</i>		
APPROVED BY: <i>TC</i>		

SHEET 7 OF 7 SHEETS Date *May 2, 1961* Reg. No. *3527* COMM. NO. *61-58*