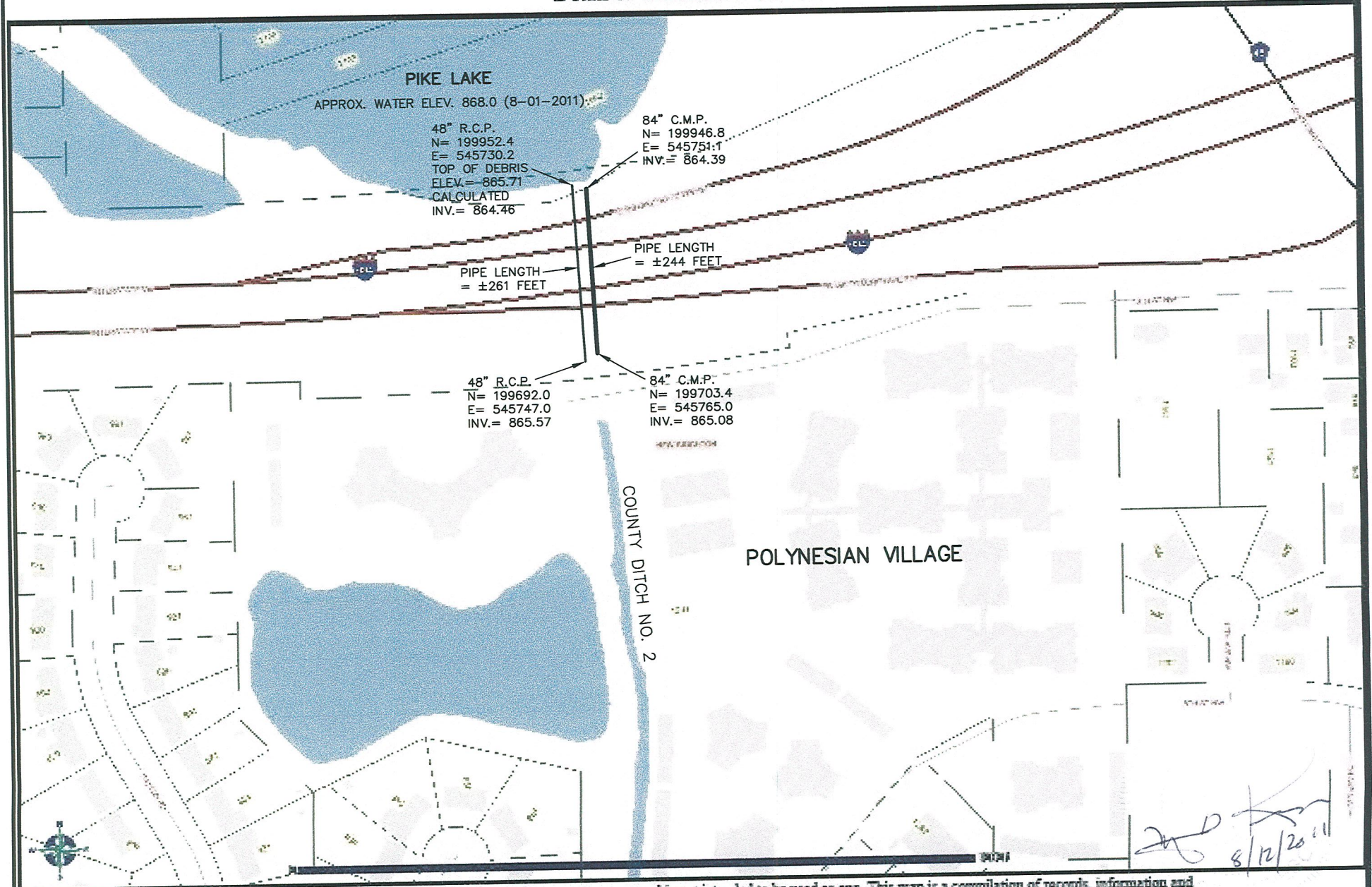


Polynesian Village

Detail of Culverts under I-694



[Handwritten Signature]
8/12/2011

DISCLAIMER: This map is neither a legally recorded map nor a survey and is not intended to be used as one. This map is a compilation of records, information and data located in various city, county, state and federal offices and other sources regarding the area shown, and is to be used for reference purposes only.

SOURCES: Ramsey County (August 1, 2011), The Lawrence Group August 1, 2011 for County parcel and property records data; August 2011 for commercial and residential data; April 2009 for color aerial imagery; All